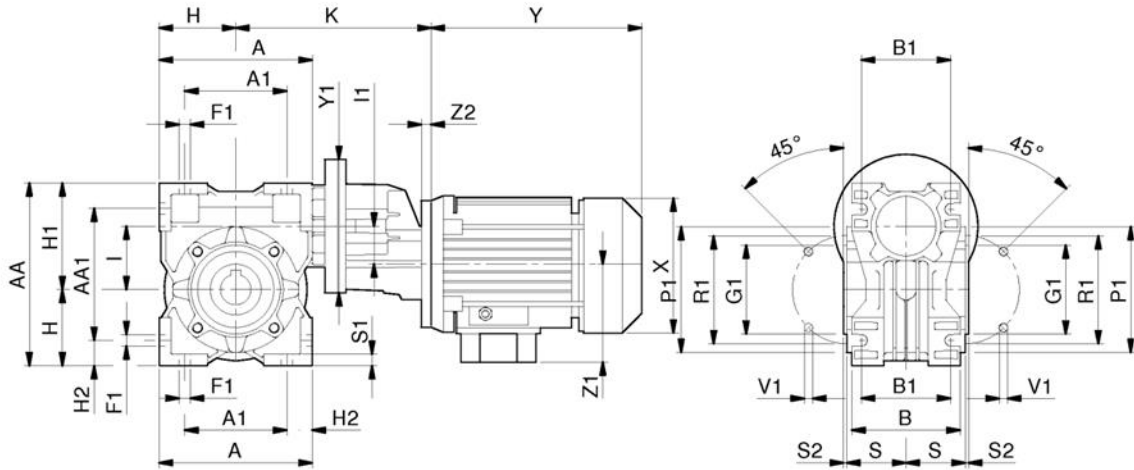
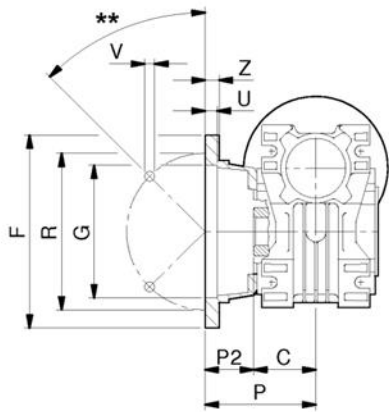
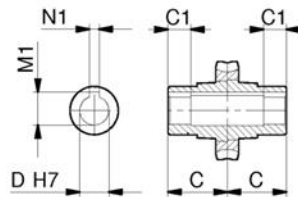


RS-RT

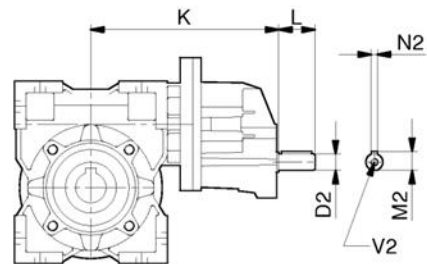
TA - Vite senza fine con precoppia - Helical/worm gearbox- Schneckengetriebe mit Stirnradvorstufe



B3



F, [FV], {FL}



TA

Dimensioni - Dimensions - Abmessungen

TA	63/40	63/50	63/60	71/50	71/60	71/70	71/85	80/60	80/70	80/85	80/110	100/110
A	100	120	144	120	144	172	206	144	172	206	255	255
A ₁	70	80	100	80	100	120	140	100	120	140	170	170
AA	121,5	144	174	144	174	205	238	174	205	238	295	295
AA ₁	91,5	104	130	104	130	153	172	130	153	172	210	210
B	71	85	100	85	100	112	130	100	112	130	144	144
B ₁	60	70	85	70	85	90	100	85	90	100	115	115
C	41	49	60	49	60	60	61	60	60	61	77,5	77,5
C ₁	26	30,5	39	30,5	39	37,5	38,5	39	37,5	38,5	52,5	52,5
D (H7)	18-19-20	24-25	25	24-25	25	25-28-30	32-35	25	25-28-30	32-35	42	42
D ₂ (h6)	11	11	11	14	14	14	14	19	19	19	19	24
F	110 {110}	125 {160}	180 {180}	125 {160}	180 {180}	200	210	180 {180}	200	210	270	270
	---	{125}	---	{125}	---	---	---	---	---	---	---	---
F ₁	7	9	9	9	9	11	13	9	11	13	15	15
G (H8)	60 {60}	70 {110}	115 {115}	70 {110}	115 {115}	130	152	115 {115}	130	152	170	170
	---	{70}	---	{70}	---	---	---	---	---	---	---	---
G ₁ (h8)	60	70	80	70	80	95	110	80	95	110	130	130
H	50	60	72	60	72	86	103	72	86	103	127,5	127,5
H ₁	71,5	84	102	84	102	119	135	102	119	135	167,5	167,5
H ₂	15	20	22	20	22	26	33	22	26	33	42,5	42,5
I	40	50	60	50	60	70	85	60	70	85	110	110
I ₁	32	32	32	40	40	40	40	50	50	50	50	50
K	153,5	171	177	173-178*	183 188*	209-214*	224 229*	207	232,5	250,5	264,5	328
L	23	23	23	30	30	30	30	40	40	40	40	50
M ₁	20,8- 21,8- 22,8	27,3- 28,3	28,3	27,3- 28,3	28,3	28,3- 31,3- 33,3	35,3- 38,3	28,3	28,3- 31,3- 33,3	35,3- 38,3	45,3	45,3
M ₂	12,5	12,5	12,5	16	16	16	16	22,5	22,5	22,5	22,5	27
N ₁	6	8	8	8	8	8	10	8	8	10	12	12
N ₂	4	4	4	5	5	5	5	6	6	6	6	8
P	69 {99}	93 {90,5}	86 {116}	93 {90,5}	86 {116}	111	111	86 {116}	111	111	131	131
	---	{123}	---	{123}	---	---	---	---	---	---	---	---
P ₁	86	100	110	100	110	130	160	110	130	160	200	200
P ₂	28 {58}	44 {41,5}	25 {56}	44 {41,5}	25 {56}	51	50	25 {56}	51	50	53,5	53,5
	---	{74}	---	{74}	---	---	---	{56}	---	---	---	---
R	87 {87}	90 {130}	150,5	90 {130}	150,5	165	175	150,5	165	175	230	230
		{90}	{150,5}	{90}	{150,5}			{150,5}				
R ₁	75	85	95	85	95	115	130	95	115	130	165	165
S	38,5	46,5	57	46,5	57	57	67	57	57	67	74	74
S ₁	7	8	10	8	10	11	14	10	11	14	13	13
S ₂	2,5	3	3	3	3	3	3	3	3	3	3,5	3,5
U	4 {4}	5 {11} {5}	6,5 {6,5}	5 {11} {5}	6,5 {6,5}	12	6	6,5 {6,5}	12	6	5	5
V	9 {9}	11 {9} {9}	11 {11}	11 {9} {9}	11 {11}	13	13	11 {11}	13	13	14	14
V ₁	M6x8 (4)	M8x10 (4)	M8x16 (8)	M8x10 (4)	M8x16 (8)	M8x16 (8)	M10x18 (8)	M8x16 (8)	M8x16 (8)	M10x18 (8)	M10x21 (8)	M10x21 (8)
V ₃	M4 x 10	M4 x 10	M4 x 10	M6 x 15	M6 x 15	M6 x 15	M6 x 15	M8 x 20	M8 x 20	M8 x 20	M8 x 20	M8 x 20
Y ₁	105	105	105	120	120	120	120	140	140	140	140	140
Z	6 {8}	10 {13} {10}	10 {10}	10 {13} {10}	10 {10}	14	16	10 {10}	14	16	18	18
Z ₂	13	13	13	13 - 18,5	13 - 18,5	13 - 18,5	13 - 18,5	14 - 15	14 - 15	14 - 15	14 - 15	14 - 15

* - IEC71-B14 (FTA 71/50, FTA71/60, FTA71/70, FTA71/85)

** - 90° per RT28 / 45° per altri tipi

Dimensioni motore: vedi pag., 67

Dimensioni non impegnative

** - 90° for RT28 / 45° for other sizes

Motor dimensions: see page 67

Not binding dimensions

** - 90° für RT28 / 45° für die andere Type

Abmessungen Motor: siehe Seite 67

unverbindliche Abmessungen