

### Input data

System of measurement		Metric
Input type		Coupling for electric motor
Input speed	[rpm]	1400
Output speed	[rpm]	140
Ratio (i=)		10
Frequency	[Hz]	50
Input options		IEC
Requested input power	[kW]	0.13
Service factor		6.2
Rated Power P1	[kW]	0.81

### Output data

#### **Gear unit** F RT 40 B3 10 63 B14 AC 19

Type		RT - Worm speed reducers
Input type		F (Elastic coupling)
Size		40
Ratio (i=)		10
Input flange		B14
Input speed	[rpm]	1400
Output speed	[rpm]	140
Rated output torque	[Nm]	7.36
Service Factor		6.2
Efficiency		0.83
Inertia moment	[kgm <sup>2</sup> ]	0.00002

#### **Gear unit configuration**

Output shaft		Hollow output shaft
Fixing		Universal
Version		B3

#### **Output radial and axial loads**

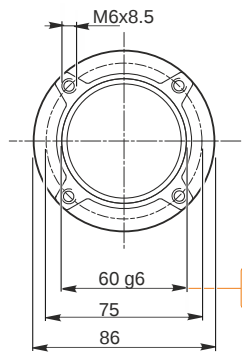
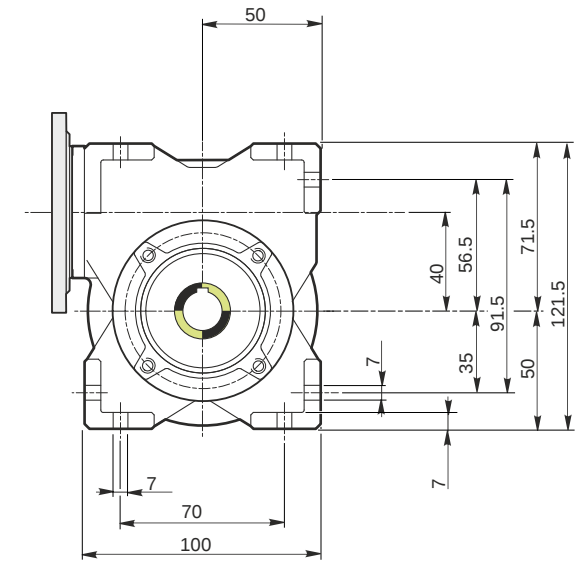
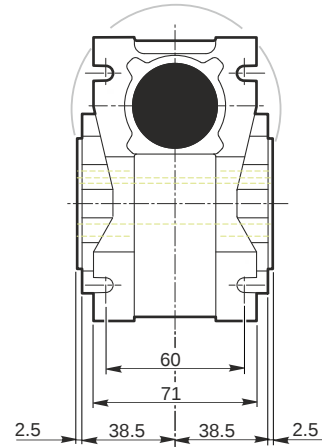
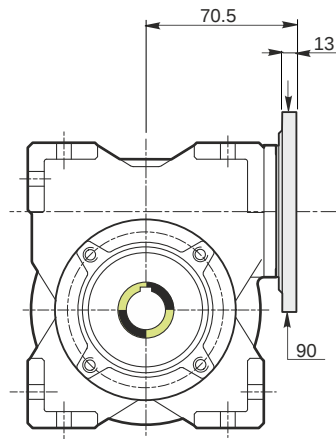
Ball bearings output radial load	[N]	1100
Taper bearings output radial load	[N]	1550
Ball bearings output axial load	[N]	220
Taper bearings output axial load	[N]	310

#### **Accessories**

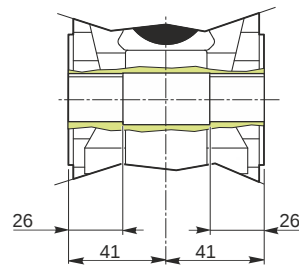
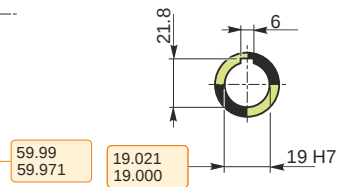
Hollow output shaft		AC 19
---------------------	--	-------

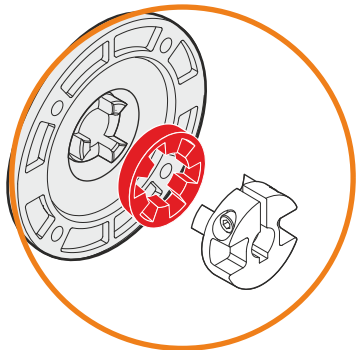
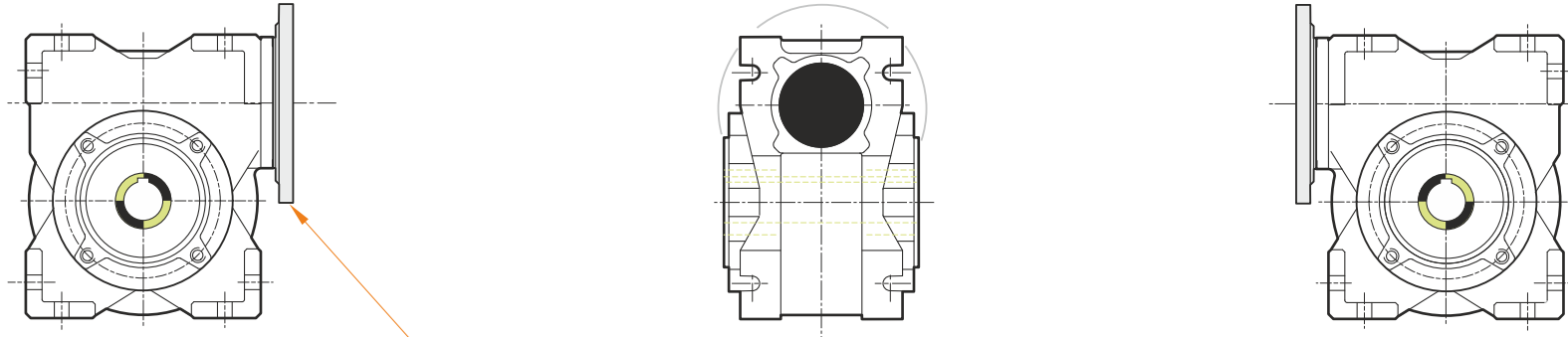
#### **Electric motor coupling**

Size		63 A4
Poles n.		4
Power	[kW]	0.13

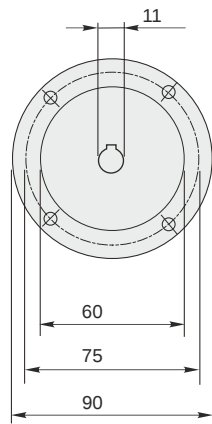


*Hollow output shaft*





This gear unit is provided with an elastic coupling motor fitting



**F RT 40 B3 10 63 B14 AC 19**

### Mounting positions

B3

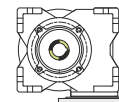
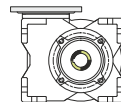
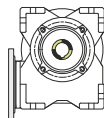
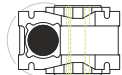
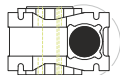
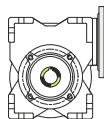
B6

B7

B8

V5

V6



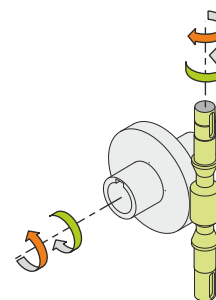
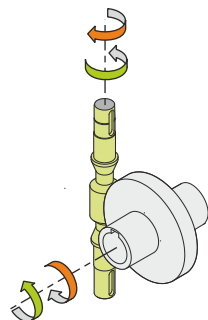
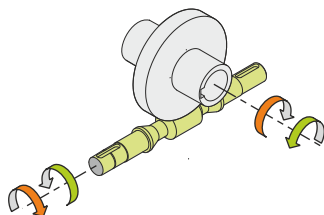
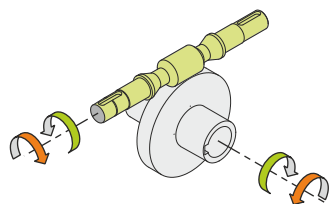
0.08



← Oil quantity [litres]

Lubricant type: Long life synthetic oil ISO VG320

### Direction of rotation



### Weight

Gear unit [kg] 2.5

### Gearing data

Axial module	2
Number of starts	3
Lead angle	16° 41'
Pressure angle	20°

### Backdriving

Static back-driving  
Quick back-driving  
Dynamic back-driving