

Input data

System of measurement		Metric
Input type		Coupling for electric motor
Input speed	[rpm]	1400
Output speed	[rpm]	14
Ratio (i=)		100
Frequency	[Hz]	50
Input options		IEC
Requested input power	[kW]	0.09
Service factor		1
Rated Power P1	[kW]	0.09

Output data

Gear unit F RT 40 B3 100 56 B14 AC 19

Type		RT - Worm speed reducers
Input type		F (Elastic coupling)
Size		40
Ratio (i=)		100
Input flange		B14
Input speed	[rpm]	1400
Output speed	[rpm]	14
Rated output torque	[Nm]	28.24
Service Factor		1
Efficiency		0.46
Inertia moment	[kgm ²]	0.000018

Gear unit configuration

Output shaft		Hollow output shaft
Fixing		Universal
Version		B3

Output radial and axial loads

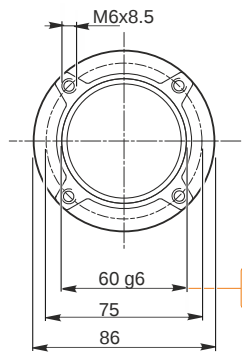
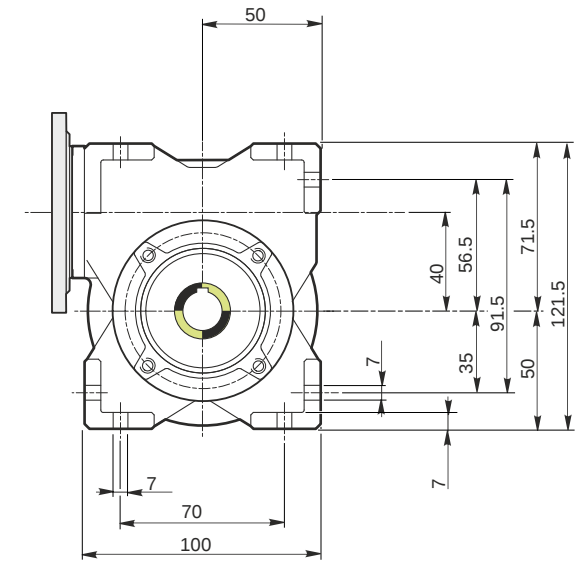
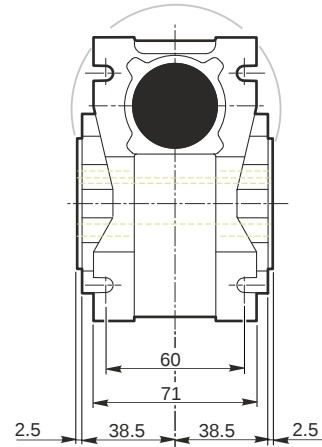
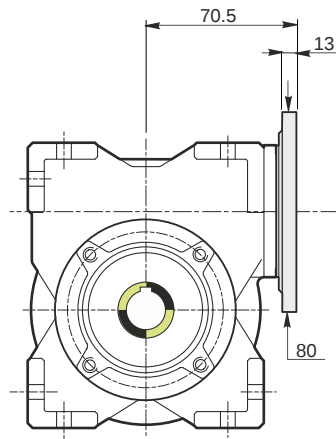
Ball bearings output radial load	[N]	2300
Taper bearings output radial load	[N]	2600
Ball bearings output axial load	[N]	460
Taper bearings output axial load	[N]	520

Accessories

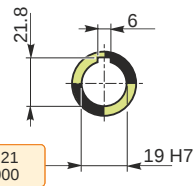
Hollow output shaft		AC 19
---------------------	--	-------

Electric motor coupling

Size		56 B4
Poles n.		4
Power	[kW]	0.09

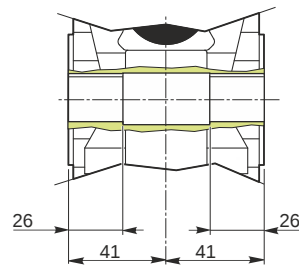


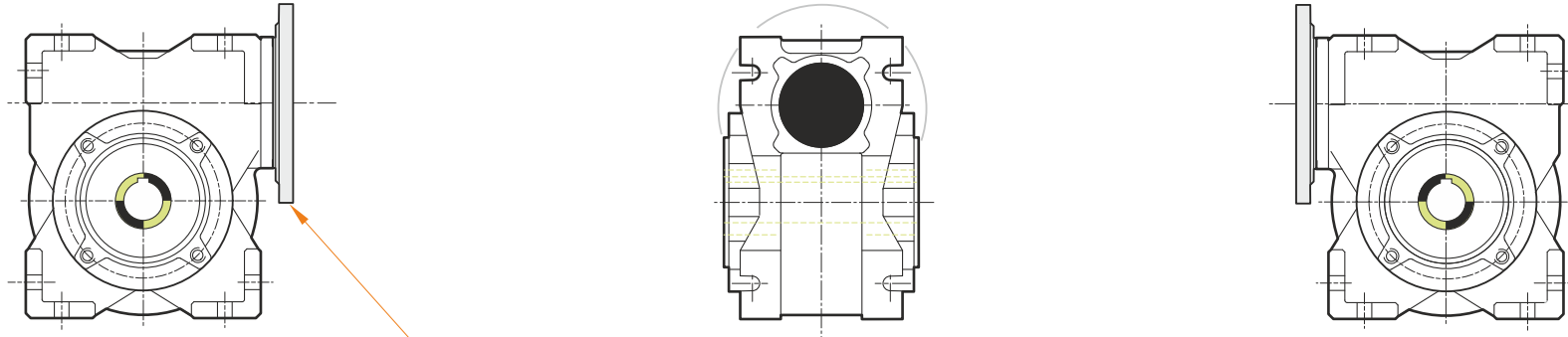
Hollow output shaft



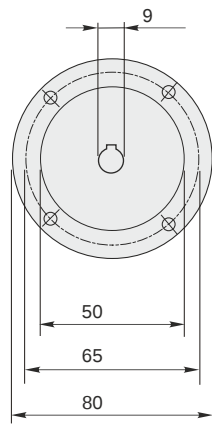
59.99
59.971

19.021
19.000





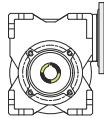
This gear unit is provided with an elastic coupling motor fitting



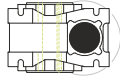
F RT 40 B3 100 56 B14 AC 19

Mounting positions

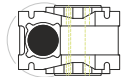
B3



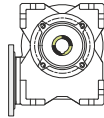
B6



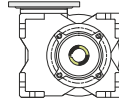
B7



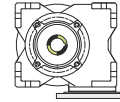
B8



V5



V6



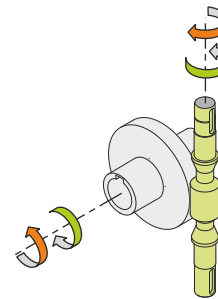
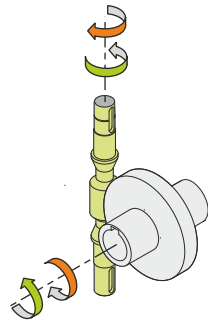
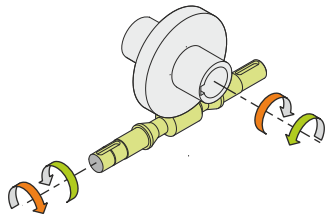
0.08



← Oil quantity [litres]

Lubricant type: Long life synthetic oil ISO VG320

Direction of rotation



Weight

Gear unit [kg] 2.5

Gearing data

Axial module 0.65
Number of starts 1
Lead angle 2° 38'
Pressure angle 20°

Backdriving

Static self-locking
No back-driving
Low dynamic back-driving