

Input data

System of measurement		Metric
Input type		Coupling for electric motor
Input speed	[rpm]	1400
Output speed	[rpm]	70
Ratio (i=)		20
Frequency	[Hz]	50
Input options		IEC
Requested input power	[kW]	0.13
Service factor		1.2
Rated Power P1	[kW]	0.16

Output data

Gear unit **F RT 28 B3 20 63 B14 AC 14**

Type		RT - Worm speed reducers
Input type		F (Elastic coupling)
Size		28
Ratio (i=)		20
Input flange		B14
Input speed	[rpm]	1400
Output speed	[rpm]	70
Rated output torque	[Nm]	13.12
Service Factor		1.2
Efficiency		0.74
Inertia moment	[kgm ²]	0.000005

Gear unit configuration

Output shaft		Hollow output shaft
Fixing		Universal
Version		B3

Output radial and axial loads

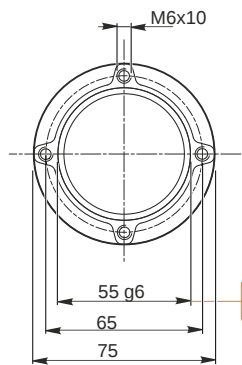
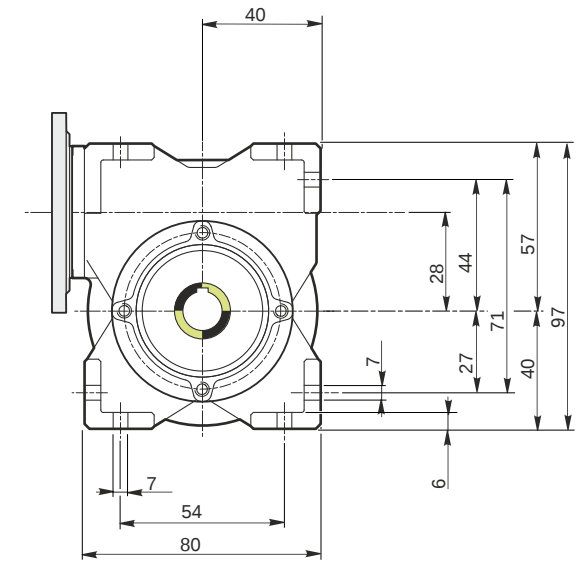
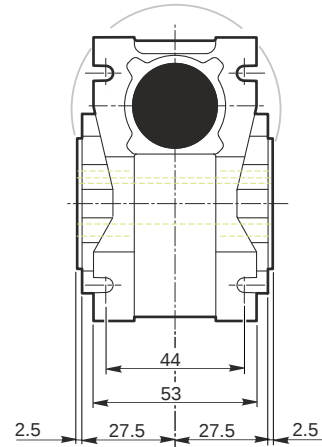
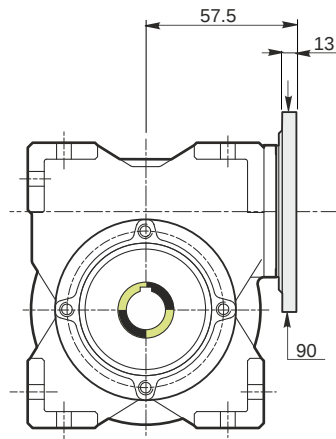
Ball bearings output radial load	[N]	600
Taper bearings output radial load	[N]	900
Ball bearings output axial load	[N]	120
Taper bearings output axial load	[N]	180

Accessories

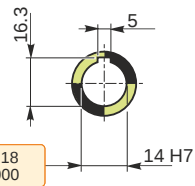
Hollow output shaft		AC 14
---------------------	--	-------

Electric motor coupling

Size		63 A4
Poles n.		4
Power	[kW]	0.13

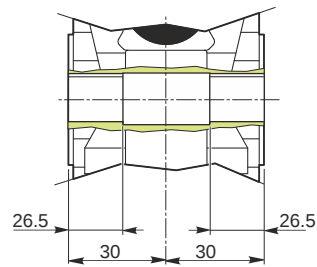


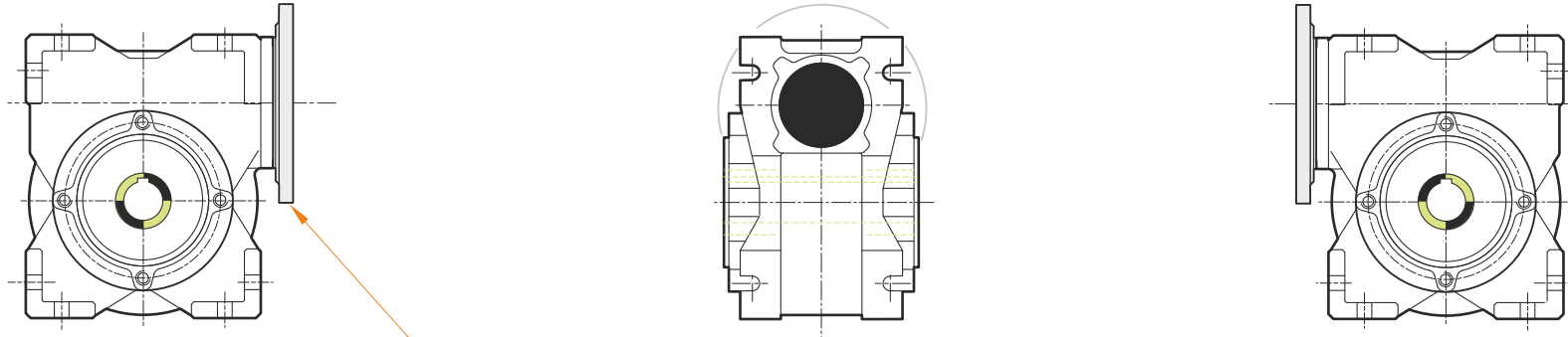
Hollow output shaft



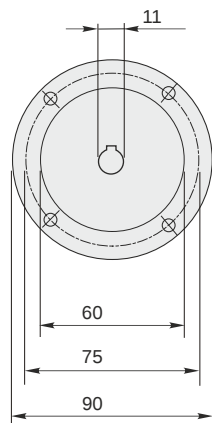
54.99
54.971

14.018
14.000





This gear unit is provided with an elastic coupling motor fitting



F RT 28 B3 20 63 B14 AC 14

Mounting positions

B3

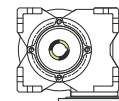
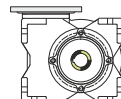
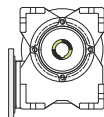
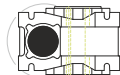
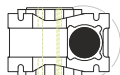
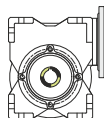
B6

B7

B8

V5

V6



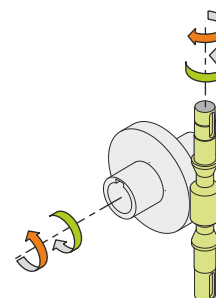
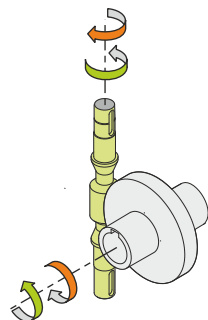
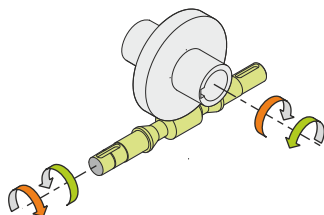
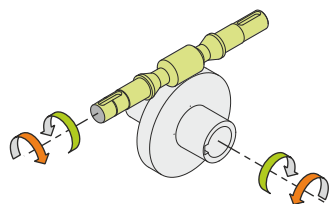
0.03



← Oil quantity [litres]

Lubricant type: Long life synthetic oil ISO VG320

Direction of rotation



Weight

Gear unit [kg] 1.1

Gearing data

Axial module	1.1
Number of starts	2
Lead angle	10° 23'
Pressure angle	20°

Backdriving

Variable static self-locking
Quick back-driving in case of vibrations
Dynamic back-driving