

Input data

System of measurement		Metric
Input type		Coupling for electric motor
Input speed	[rpm]	1400
Output speed	[rpm]	200
Ratio (i=)		7
Frequency	[Hz]	50
Input options		IEC
Requested input power	[kW]	0.18
Service factor		2.5
Rated Power P1	[kW]	0.45

Output data

Gear unit **F RT 28 B3 7 63 B14 AC 14**

Type		RT - Worm speed reducers
Input type		F (Elastic coupling)
Size		28
Ratio (i=)		7
Input flange		B14
Input speed	[rpm]	1400
Output speed	[rpm]	200
Rated output torque	[Nm]	7.22
Service Factor		2.5
Efficiency		0.84
Inertia moment	[kgm ²]	0.000006

Gear unit configuration

Output shaft		Hollow output shaft
Fixing		Universal
Version		B3

Output radial and axial loads

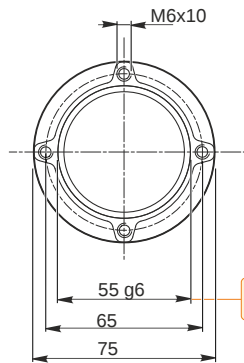
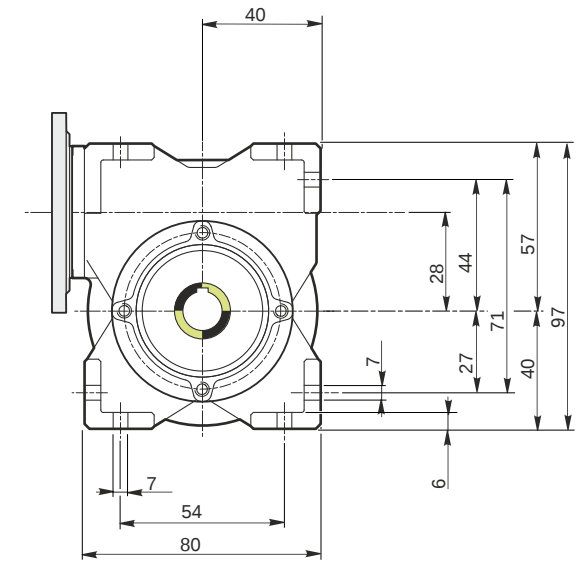
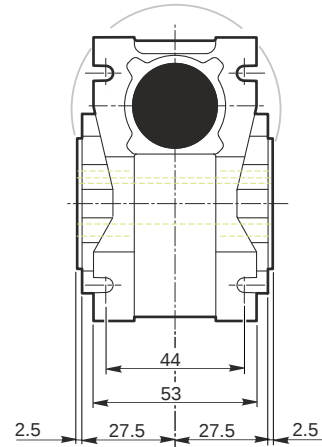
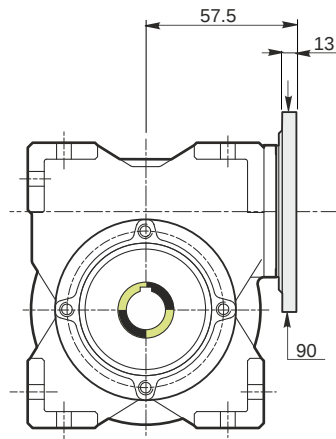
Ball bearings output radial load	[N]	450
Taper bearings output radial load	[N]	650
Ball bearings output axial load	[N]	90
Taper bearings output axial load	[N]	130

Accessories

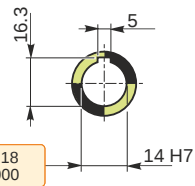
Hollow output shaft		AC 14
---------------------	--	-------

Electric motor coupling

Size		63 B4
Poles n.		4
Power	[kW]	0.18

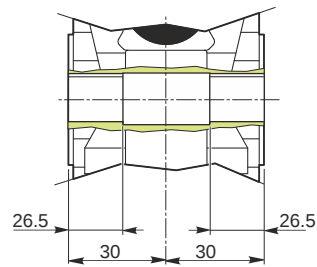


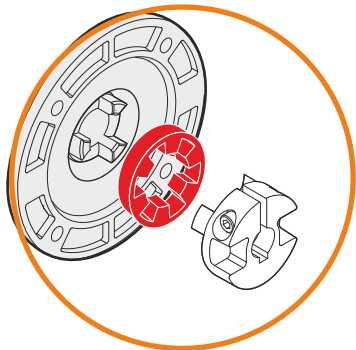
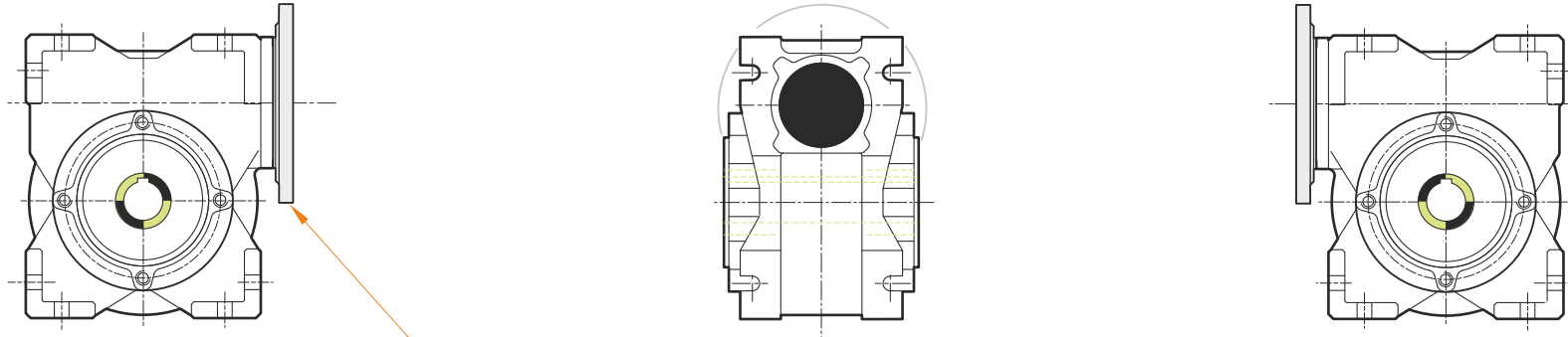
Hollow output shaft



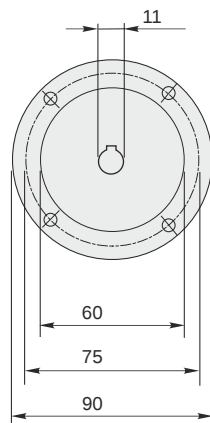
54.99
54.971

14.018
14.000





This gear unit is provided with an elastic coupling motor fitting



F RT 28 B3 7 63 B14 AC 14

Mounting positions

B3

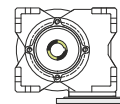
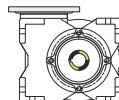
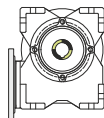
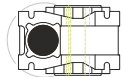
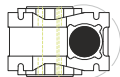
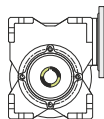
B6

B7

B8

V5

V6



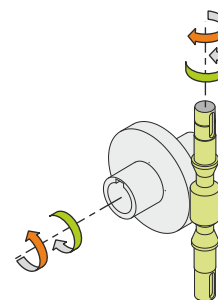
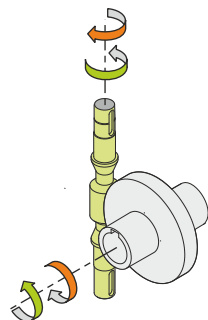
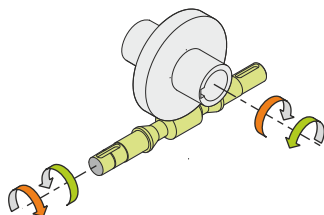
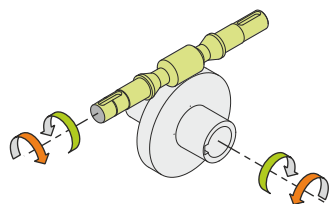
0.03



← Oil quantity [litres]

Lubricant type: Long life synthetic oil ISO VG320

Direction of rotation



Weight

Gear unit [kg] 1.1

Gearing data

Axial module	1.5
Number of starts	4
Lead angle	23° 11'
Pressure angle	20°

Backdriving

Static back-driving
Quick back-driving
Dynamic back-driving