

Input data

System of measurement		Metric
Input type		Coupling for electric motor
Input speed	[rpm]	1400
Output speed	[rpm]	25
Ratio (i=)		56
Frequency	[Hz]	50
Input options		IEC
Requested input power	[kW]	0.09
Service factor		0.9
Rated Power P1	[kW]	0.08

Output data

Gear unit **F RT 28 B3 56 56 B14 AC 14**

Type		RT - Worm speed reducers
Input type		F (Elastic coupling)
Size		28
Ratio (i=)		56
Input flange		B14
Input speed	[rpm]	1400
Output speed	[rpm]	25
Rated output torque	[Nm]	17.53
Service Factor		0.9
Efficiency		0.51
Inertia moment	[kgm ²]	0.000005

Gear unit configuration

Output shaft		Hollow output shaft
Fixing		Universal
Version		B3

Output radial and axial loads

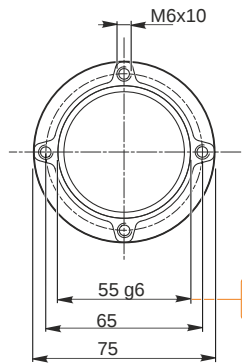
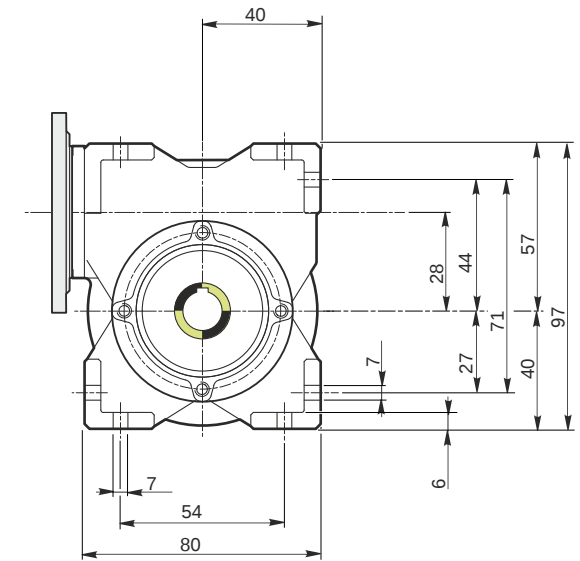
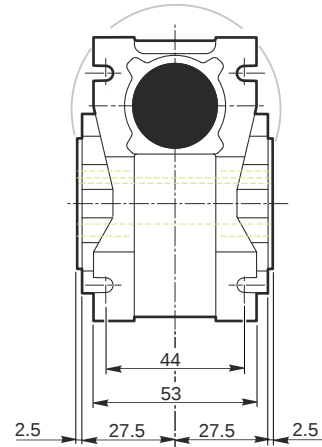
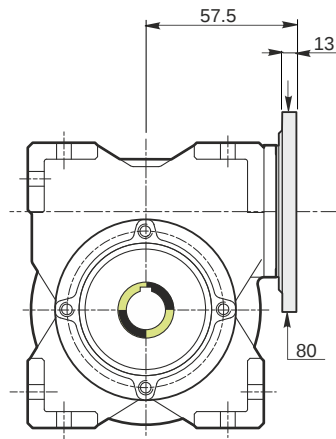
Ball bearings output radial load	[N]	800
Taper bearings output radial load	[N]	1200
Ball bearings output axial load	[N]	160
Taper bearings output axial load	[N]	240

Accessories

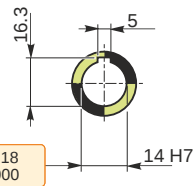
Hollow output shaft		AC 14
---------------------	--	-------

Electric motor coupling

Size		56 B4
Poles n.		4
Power	[kW]	0.09

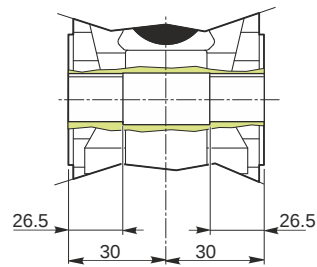


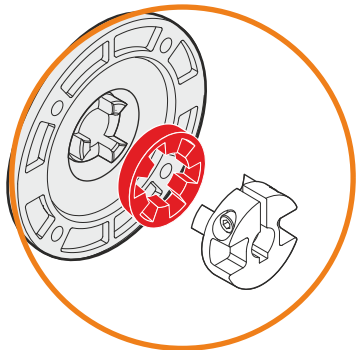
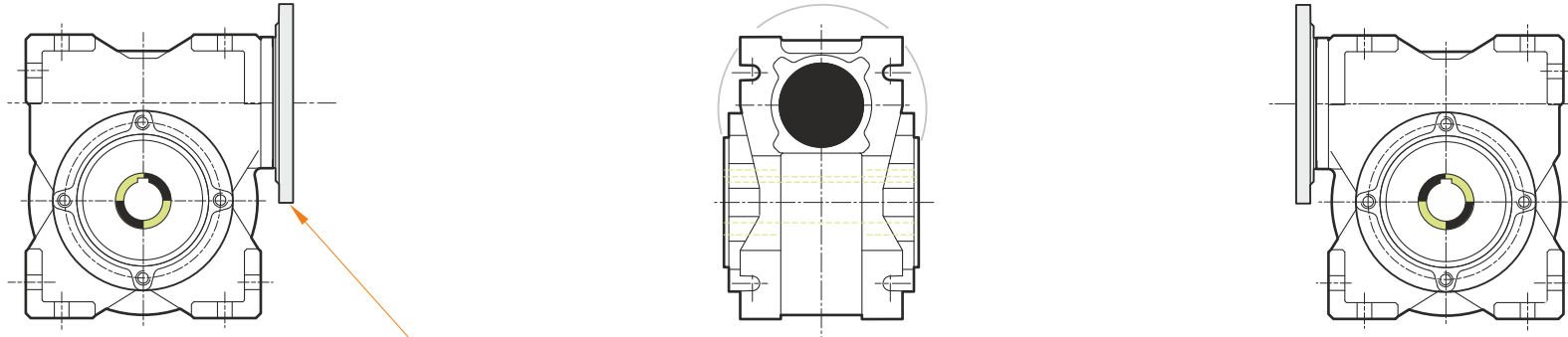
Hollow output shaft



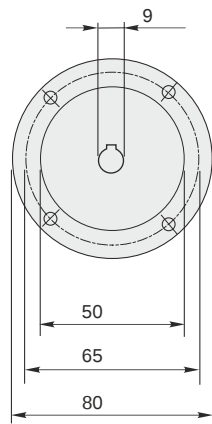
54.99
54.971

14.018
14.000





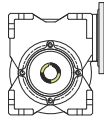
This gear unit is provided with an elastic coupling motor fitting



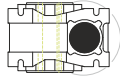
F RT 28 B3 56 56 B14 AC 14

Mounting positions

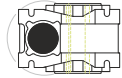
B3



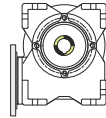
B6



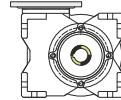
B7



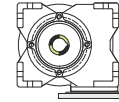
B8



V5



V6



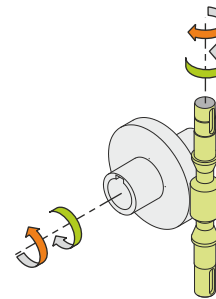
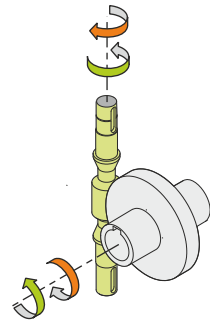
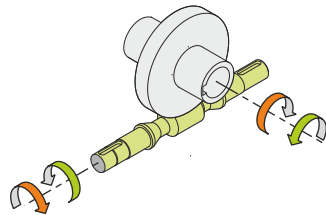
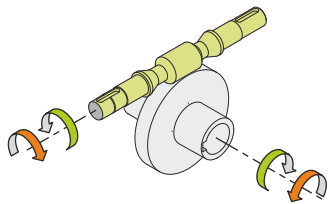
0.03



← Oil quantity [litres]

Lubricant type: Long life synthetic oil ISO VG320

Direction of rotation



Weight

Gear unit [kg] 1.1

Gearing data

Axial module	0.75
Number of starts	1
Lead angle	3° 03'
Pressure angle	20°

Backdriving

Static self-locking
Slow back-driving in case of vibrations
Low dynamic back-driving