

### Input data

System of measurement		Metric
Input type		Coupling for electric motor
Input speed	[rpm]	1400
Output speed	[rpm]	20
Ratio (i=)		70
Frequency	[Hz]	50
Input options		IEC
Requested input power	[kW]	0.06
Service factor		0.9
Rated Power P1	[kW]	0.06

### Output data

#### **Gear unit** F RT 28 B3 70 56 B14 AC 14

Type		RT - Worm speed reducers
Input type		F (Elastic coupling)
Size		28
Ratio (i=)		70
Input flange		B14
Input speed	[rpm]	1400
Output speed	[rpm]	20
Rated output torque	[Nm]	12.89
Service Factor		0.9
Efficiency		0.45
Inertia moment	[kgm <sup>2</sup> ]	0.000005

#### **Gear unit configuration**

Output shaft		Hollow output shaft
Fixing		Universal
Version		B3

#### **Output radial and axial loads**

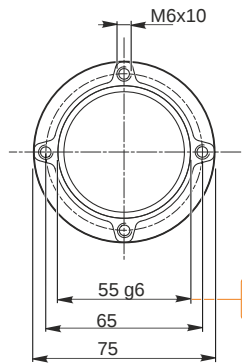
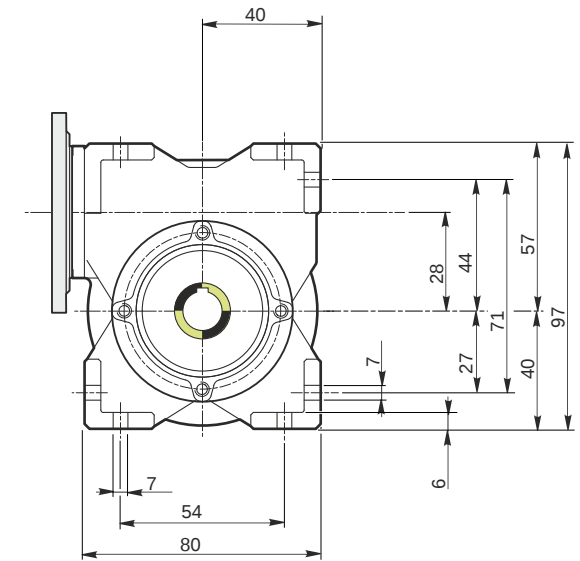
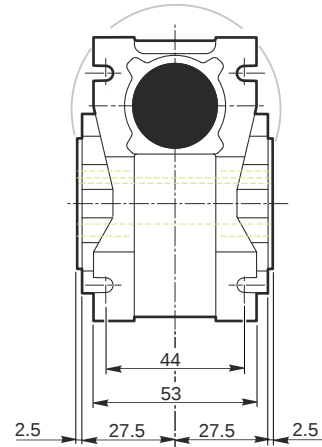
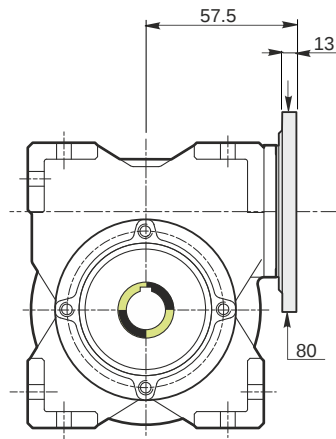
Ball bearings output radial load	[N]	900
Taper bearings output radial load	[N]	1300
Ball bearings output axial load	[N]	180
Taper bearings output axial load	[N]	260

#### **Accessories**

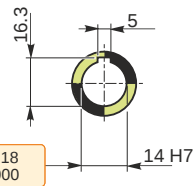
Hollow output shaft		AC 14
---------------------	--	-------

#### **Electric motor coupling**

Size		56 A4
Poles n.		4
Power	[kW]	0.06

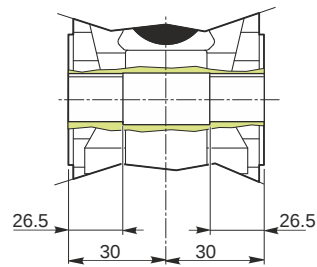


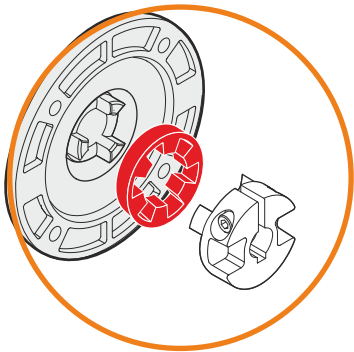
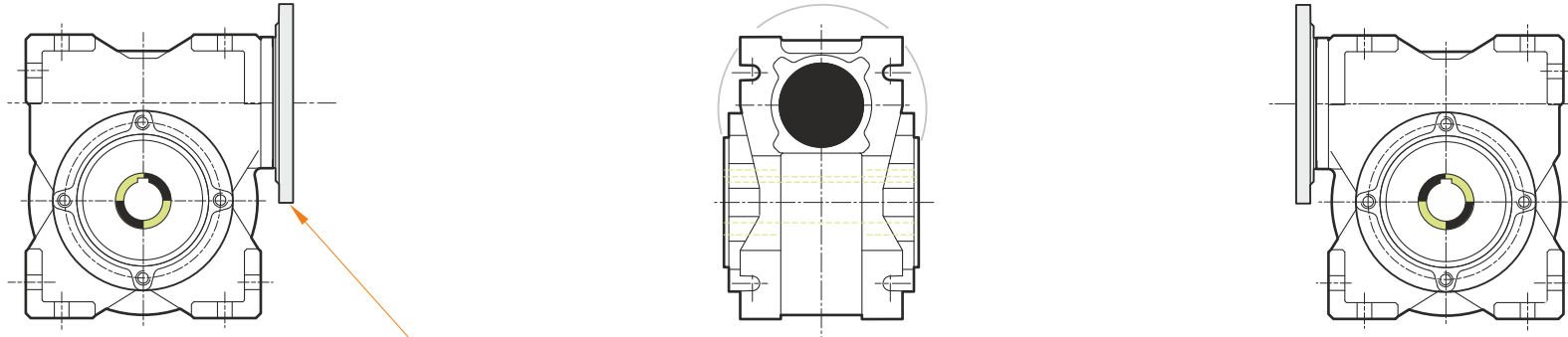
*Hollow output shaft*



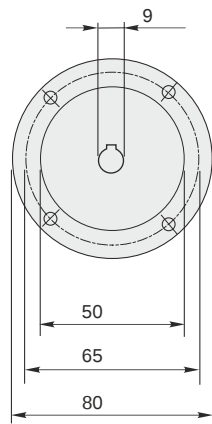
54.99  
54.971

14.018  
14.000





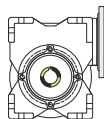
This gear unit is provided with an elastic coupling motor fitting



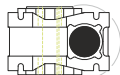
**F RT 28 B3 70 56 B14 AC 14**

**Mounting positions**

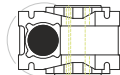
**B3**



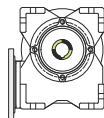
**B6**



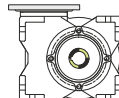
**B7**



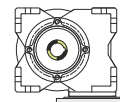
**B8**



**V5**



**V6**



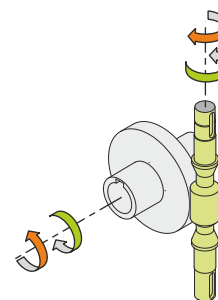
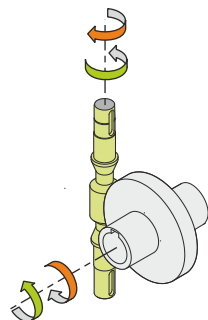
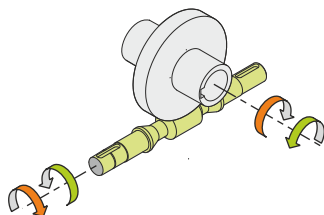
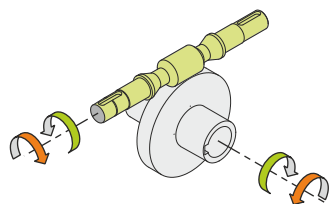
0.03



← Oil quantity [litres]

Lubricant type: Long life synthetic oil ISO VG320

**Direction of rotation**



**Weight**

Gear unit [kg] 1.1

**Gearing data**

Axial module 0.6  
Number of starts 1  
Lead angle 2° 27'  
Pressure angle 20°

**Backdriving**

Static self-locking  
No back-driving  
Low dynamic back-driving