

### Input data

System of measurement		Metric
Input type		Coupling for electric motor
Input speed	[rpm]	1400
Output speed	[rpm]	35
Ratio (i=)		40
Frequency	[Hz]	50
Input options		IEC
Requested input power	[kW]	0.18
Service factor		1.4
Rated Power P1	[kW]	0.25

### Output data

#### Gear unit **F RT 40 B3 40 63 B14 AC 19**

Type		RT - Worm speed reducers
Input type		F (Elastic coupling)
Size		40
Ratio (i=)		40
Input flange		B14
Input speed	[rpm]	1400
Output speed	[rpm]	35
Rated output torque	[Nm]	29.96
Service Factor		1.4
Efficiency		0.61
Inertia moment	[kgm <sup>2</sup> ]	0.000018

#### Gear unit configuration

Output shaft		Hollow output shaft
Fixing		Universal
Version		B3

#### Output radial and axial loads

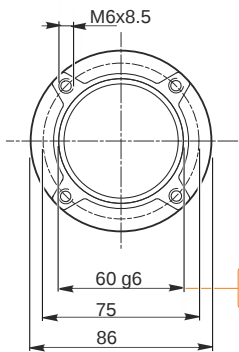
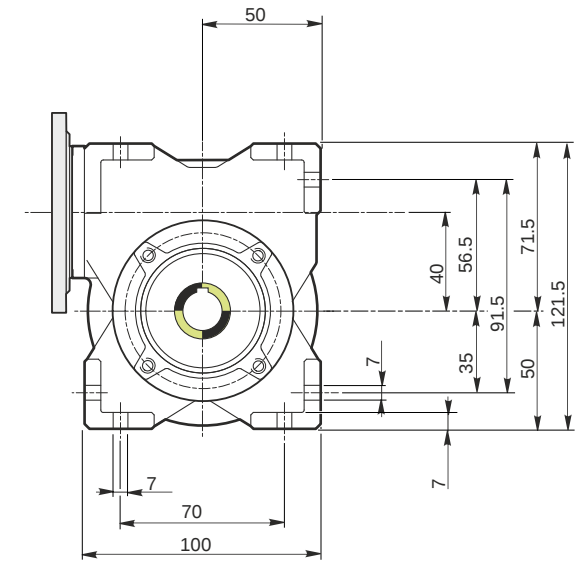
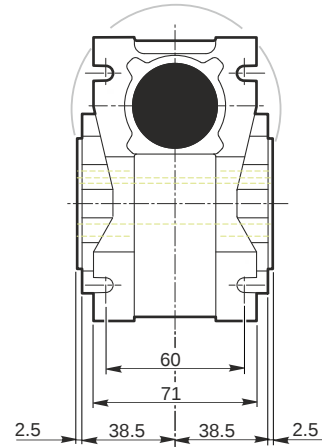
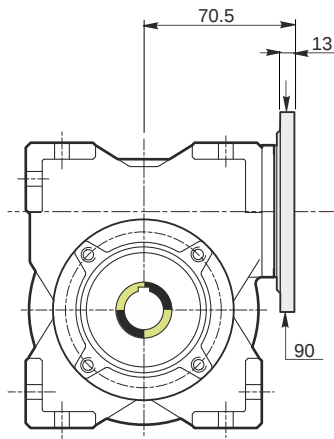
Ball bearings output radial load	[N]	1600
Taper bearings output radial load	[N]	2250
Ball bearings output axial load	[N]	320
Taper bearings output axial load	[N]	450

#### Accessories

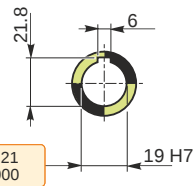
Hollow output shaft		AC 19
---------------------	--	-------

#### Electric motor coupling

Size		63 B4
Poles n.		4
Power	[kW]	0.18

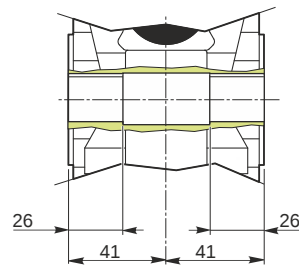


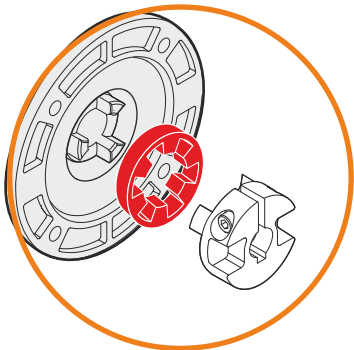
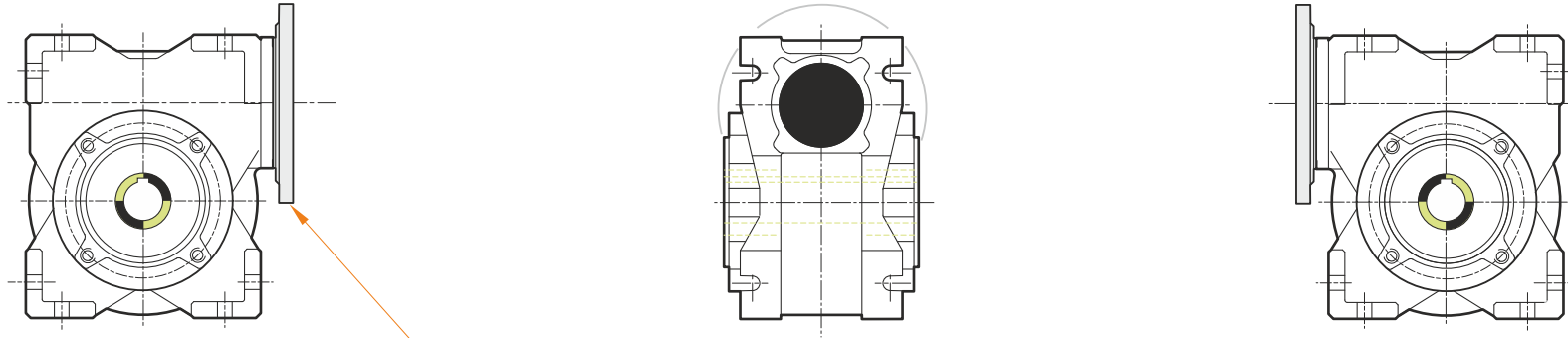
*Hollow output shaft*



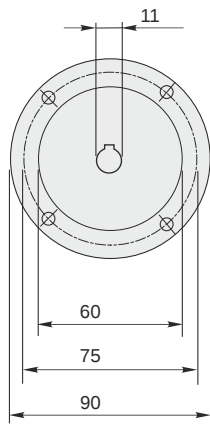
59.99  
59.971

19.021  
19.000





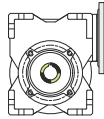
This gear unit is provided with an elastic coupling motor fitting



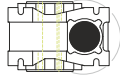
**F RT 40 B3 40 63 B14 AC 19**

**Mounting positions**

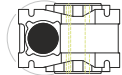
**B3**



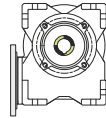
**B6**



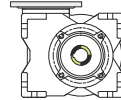
**B7**



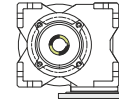
**B8**



**V5**



**V6**



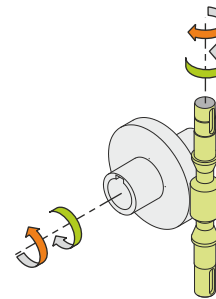
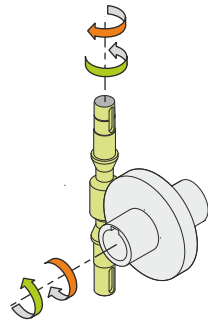
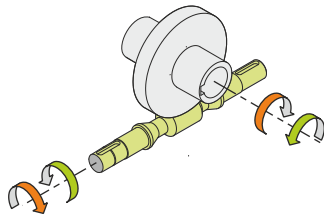
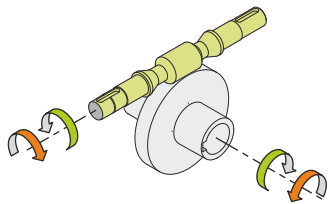
0.08



← Oil quantity [litres]

Lubricant type: Long life synthetic oil ISO VG320

**Direction of rotation**



**Weight**

Gear unit [kg] 2.5

**Gearing data**

Axial module 1.5  
Number of starts 1  
Lead angle 4° 17'  
Pressure angle 20°

**Backdriving**

Static self-locking  
Slow back-driving in case of vibrations  
Low dynamic back-driving