

Input data

System of measurement		Metric
Input type		Coupling for electric motor
Input speed	[rpm]	1400
Output speed	[rpm]	50
Ratio (i=)		28
Frequency	[Hz]	50
Input options		IEC
Requested input power	[kW]	1.5
Service factor		1
Rated Power P1	[kW]	1.51

Output data

Gear unit F RT 70 B3 28 90 B14 AC 28

Type		RT - Worm speed reducers
Input type		F (Elastic coupling)
Size		70
Ratio (i=)		28
Input flange		B14
Input speed	[rpm]	1400
Output speed	[rpm]	50
Rated output torque	[Nm]	214.88
Service Factor		1
Efficiency		0.75
Inertia moment	[kgm ²]	0.000247

Gear unit configuration

Output shaft		Hollow output shaft
Fixing		Universal
Version		B3

Output radial and axial loads

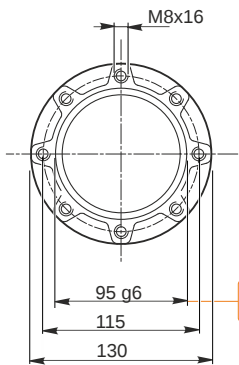
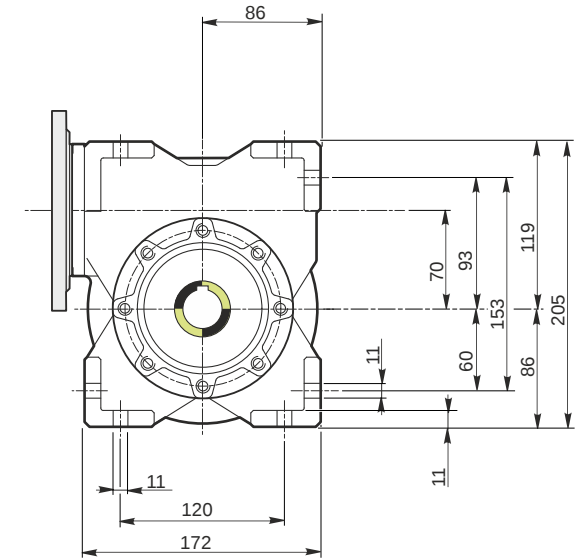
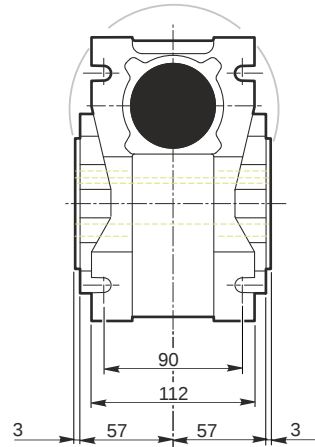
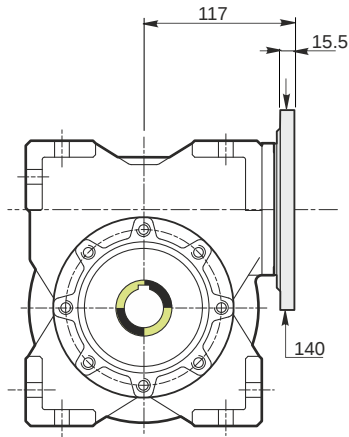
Ball bearings output radial load	[N]	4200
Taper bearings output radial load	[N]	5600
Ball bearings output axial load	[N]	840
Taper bearings output axial load	[N]	1120

Accessories

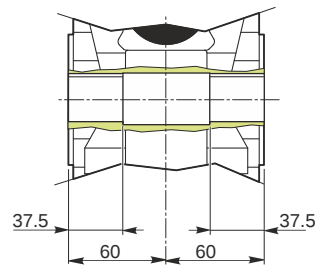
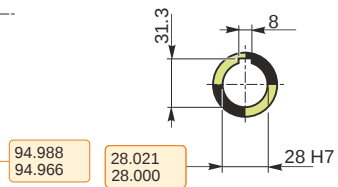
Hollow output shaft		AC 28
---------------------	--	-------

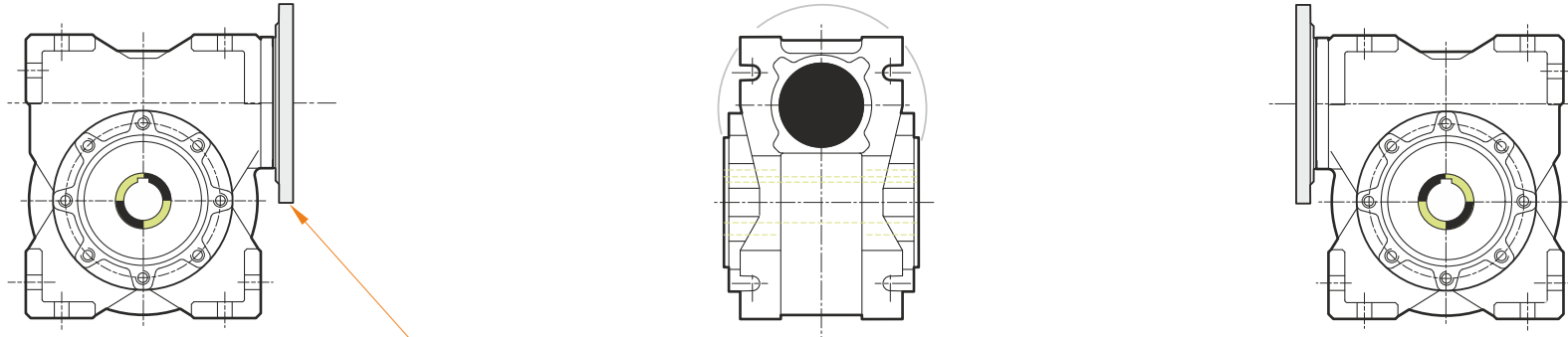
Electric motor coupling

Size		90 L4
Poles n.		4
Power	[kW]	1.5

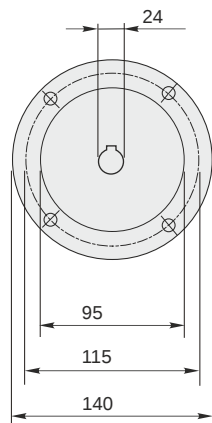


Hollow output shaft



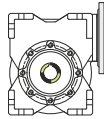


This gear unit is provided with an elastic coupling motor fitting

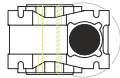


Mounting positions

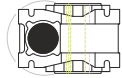
B3



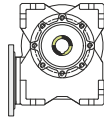
B6



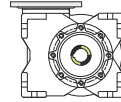
B7



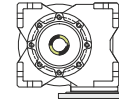
B8



V5



V6



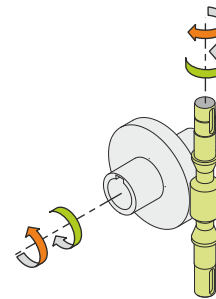
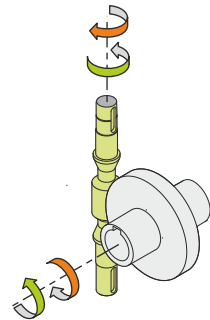
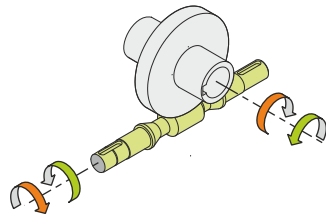
0.35



← Oil quantity [litres]

Lubricant type: Long life synthetic oil ISO VG320

Direction of rotation



Weight

Gear unit [kg] 9

Gearing data

Axial module	3.9
Number of starts	1
Lead angle	7° 12'
Pressure angle	20°

Backdriving

Static self-locking
Slow back-driving in case of vibrations
Low dynamic back-driving