

Input data

| | | |
|-----------------------|-------|-----------------------------|
| System of measurement | | Metric |
| Input type | | Coupling for electric motor |
| Input speed | [rpm] | 1400 |
| Output speed | [rpm] | 200 |
| Ratio (i=) | | 7 |
| Frequency | [Hz] | 50 |
| Input options | | IEC |
| Requested input power | [kW] | 0.75 |
| Service factor | | 2.4 |
| Rated Power P1 | [kW] | 1.83 |

Output data

Gear unit **F RT 50 B3 7 80 B14 AC 24**

| | | |
|---------------------|---------------------|--------------------------|
| Type | | RT - Worm speed reducers |
| Input type | | F (Elastic coupling) |
| Size | | 50 |
| Ratio (i=) | | 7 |
| Input flange | | B14 |
| Input speed | [rpm] | 1400 |
| Output speed | [rpm] | 200 |
| Rated output torque | [Nm] | 30.8 |
| Service Factor | | 2.4 |
| Efficiency | | 0.86 |
| Inertia moment | [kgm ²] | 0.000061 |

Gear unit configuration

| | | |
|--------------|--|---------------------|
| Output shaft | | Hollow output shaft |
| Fixing | | Universal |
| Version | | B3 |

Output radial and axial loads

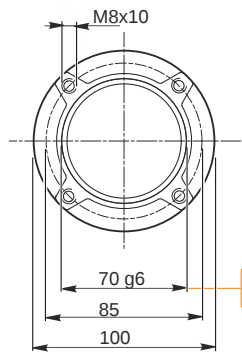
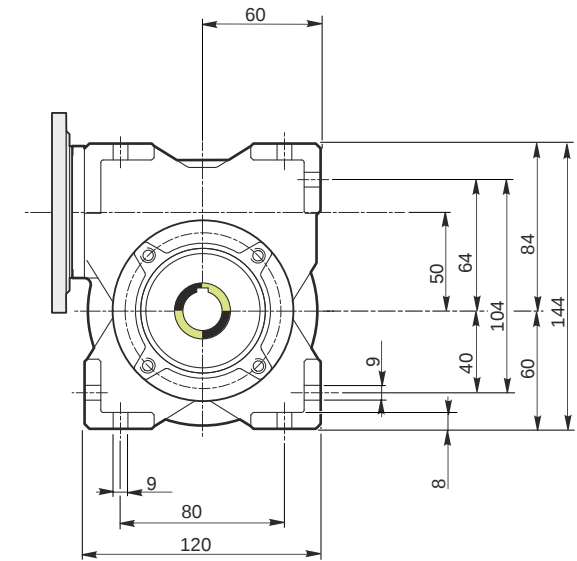
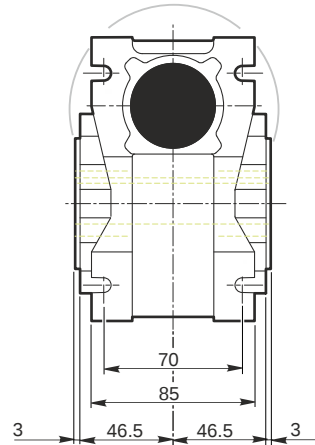
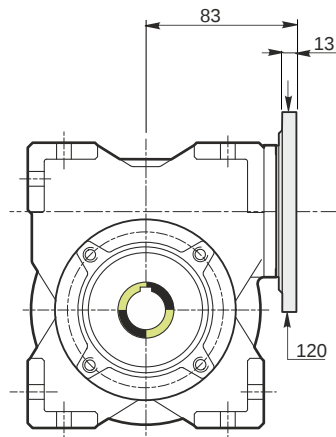
| | | |
|-----------------------------------|-----|------|
| Ball bearings output radial load | [N] | 1250 |
| Taper bearings output radial load | [N] | 1750 |
| Ball bearings output axial load | [N] | 250 |
| Taper bearings output axial load | [N] | 350 |

Accessories

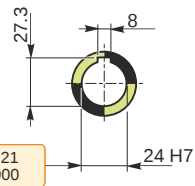
| | | |
|---------------------|--|-------|
| Hollow output shaft | | AC 24 |
|---------------------|--|-------|

Electric motor coupling

| | | |
|----------|------|-------|
| Size | | 80 B4 |
| Poles n. | | 4 |
| Power | [kW] | 0.75 |

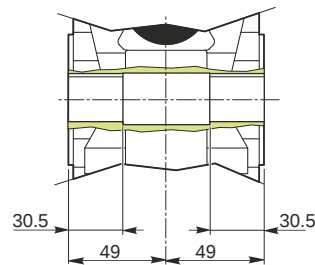


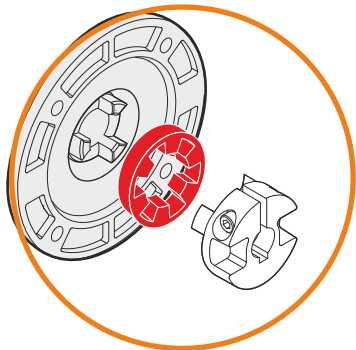
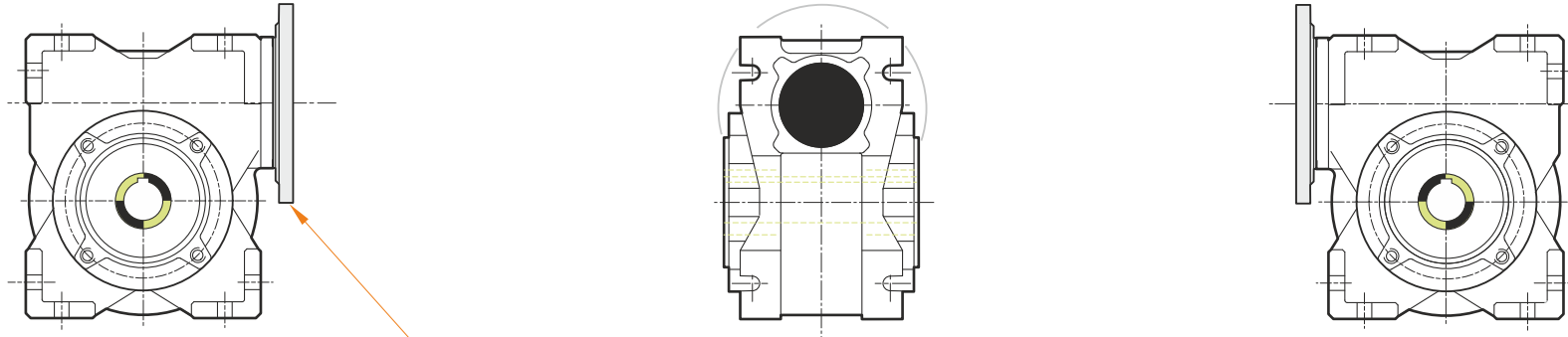
Hollow output shaft



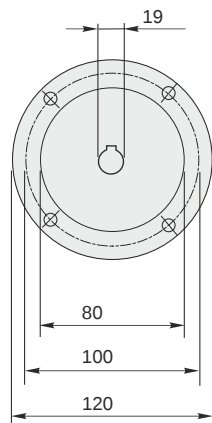
69.99
69.971

24.021
24.000



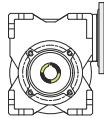


This gear unit is provided with an elastic coupling motor fitting

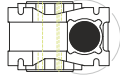


Mounting positions

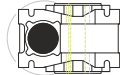
B3



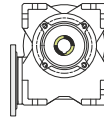
B6



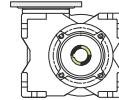
B7



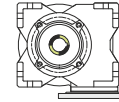
B8



V5



V6



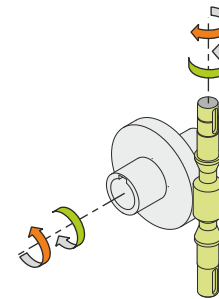
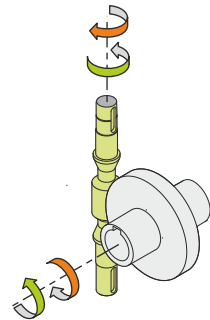
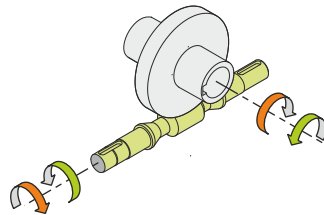
0.13



← Oil quantity [litres]

Lubricant type: Long life synthetic oil ISO VG320

Direction of rotation



Weight

Gear unit [kg] 3.8

Gearing data

Axial module 2.7
Number of starts
Lead angle 23° 52'
Pressure angle 20°

Backdriving

Static back-driving
Quick back-driving
Dynamic back-driving