

### Input data

System of measurement		Metric
Input type		Coupling for electric motor
Input speed	[rpm]	1400
Output speed	[rpm]	93.33
Ratio (i=)		15
Frequency	[Hz]	50
Input options		IEC
Requested input power	[kW]	0.75
Service factor		1.2
Rated Power P1	[kW]	0.93

### Output data

#### **Gear unit** F RT 50 B3 15 80 B14 AC 24

Type		RT - Worm speed reducers
Input type		F (Elastic coupling)
Size		50
Ratio (i=)		15
Input flange		B14
Input speed	[rpm]	1400
Output speed	[rpm]	93.33
Rated output torque	[Nm]	59.86
Service Factor		1.2
Efficiency		0.78
Inertia moment	[kgm <sup>2</sup> ]	0.00005

#### **Gear unit configuration**

Output shaft		Hollow output shaft
Fixing		Universal
Version		B3

#### **Output radial and axial loads**

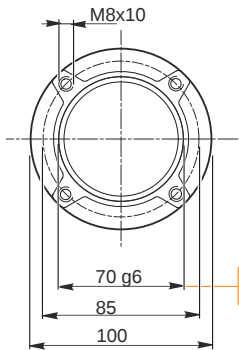
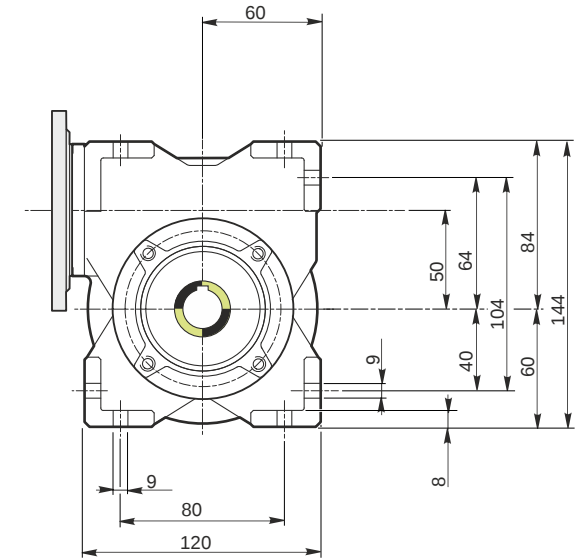
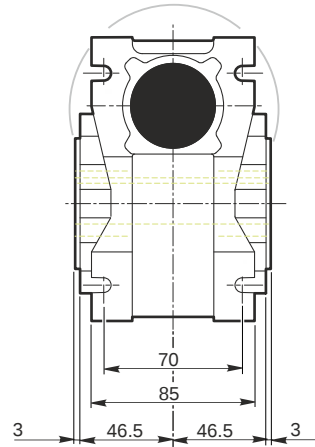
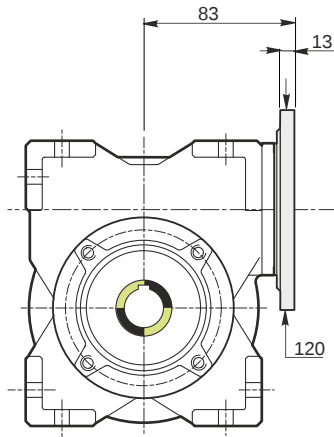
Ball bearings output radial load	[N]	1700
Taper bearings output radial load	[N]	2400
Ball bearings output axial load	[N]	340
Taper bearings output axial load	[N]	480

#### **Accessories**

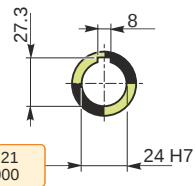
Hollow output shaft		AC 24
---------------------	--	-------

#### **Electric motor coupling**

Size		80 B4
Poles n.		4
Power	[kW]	0.75

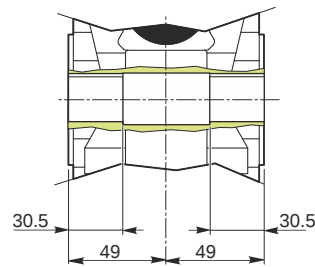


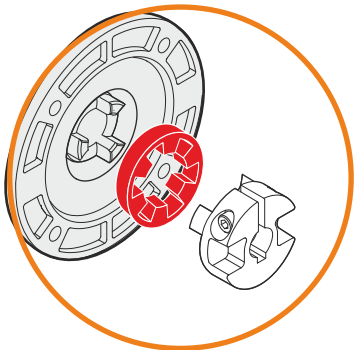
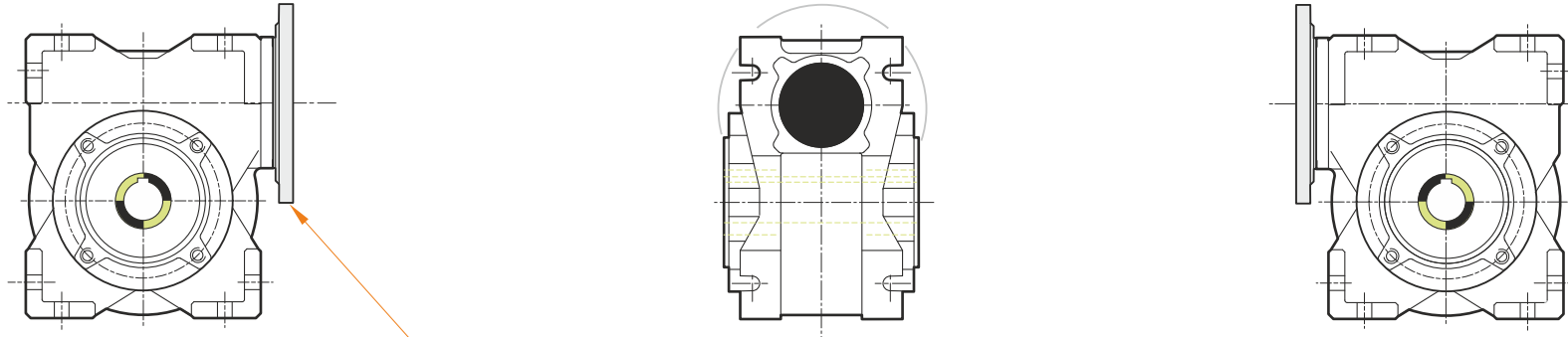
Hollow output shaft



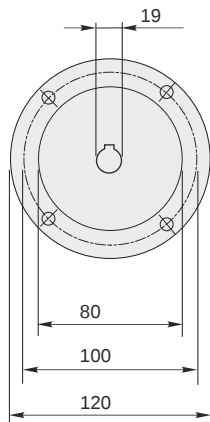
69.99  
69.971

24.021  
24.000





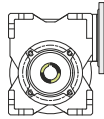
This gear unit is provided with an elastic coupling motor fitting



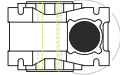
**F RT 50 B3 15 80 B14 AC 24**

**Mounting positions**

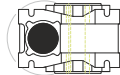
**B3**



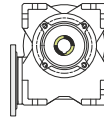
**B6**



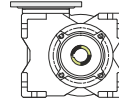
**B7**



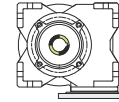
**B8**



**V5**



**V6**



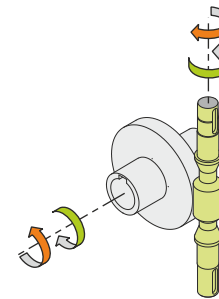
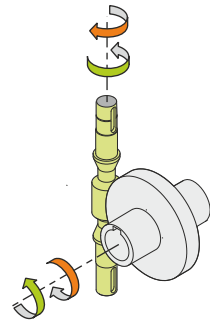
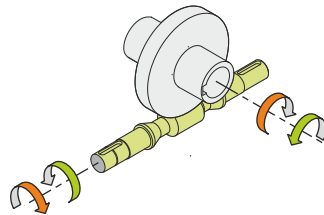
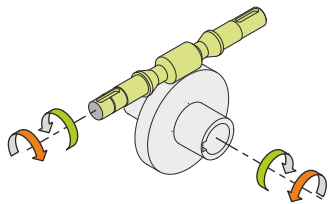
0.13



← Oil quantity [litres]

Lubricant type: Long life synthetic oil ISO VG320

**Direction of rotation**



**Weight**

Gear unit [kg] 3.8

**Gearing data**

Axial module	2.5
Number of starts	2
Lead angle	11° 18'
Pressure angle	20°

**Backdriving**

Variable static self-locking  
Quick back-driving in case of vibrations  
Dynamic back-driving