

### Input data

System of measurement		Metric
Input type		Coupling for electric motor
Input speed	[rpm]	1400
Output speed	[rpm]	50
Ratio (i=)		28
Frequency	[Hz]	50
Input options		IEC
Requested input power	[kW]	0.75
Service factor		1.4
Rated Power P1	[kW]	1.02

### Output data

#### Gear unit **F RT 60 B3 28 80 B14 AC 25**

Type		RT - Worm speed reducers
Input type		F (Elastic coupling)
Size		60
Ratio (i=)		28
Input flange		B14
Input speed	[rpm]	1400
Output speed	[rpm]	50
Rated output torque	[Nm]	101.71
Service Factor		1.4
Efficiency		0.71
Inertia moment	[kgm <sup>2</sup> ]	0.000105

#### Gear unit configuration

Output shaft		Hollow output shaft
Fixing		Universal
Version		B3

#### Output radial and axial loads

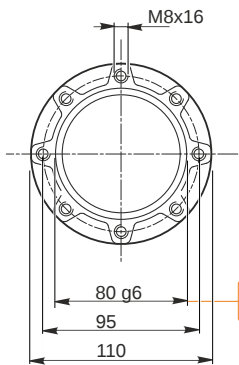
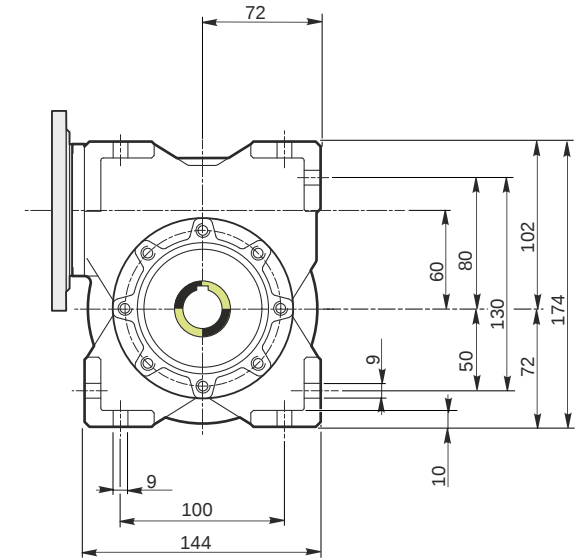
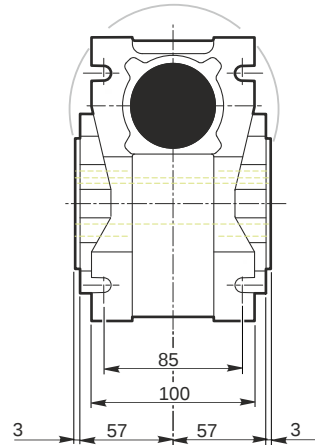
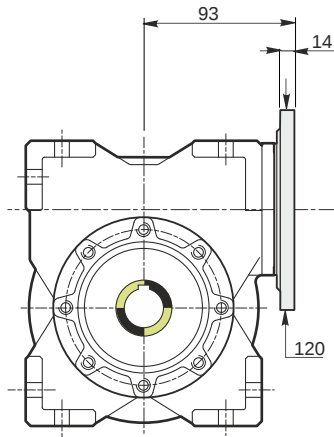
Ball bearings output radial load	[N]	3600
Taper bearings output radial load	[N]	4800
Ball bearings output axial load	[N]	720
Taper bearings output axial load	[N]	960

#### Accessories

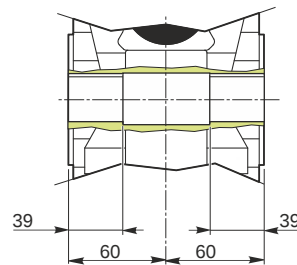
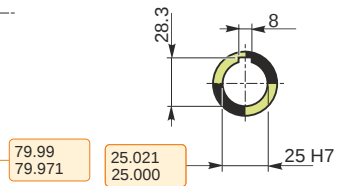
Hollow output shaft		AC 25
---------------------	--	-------

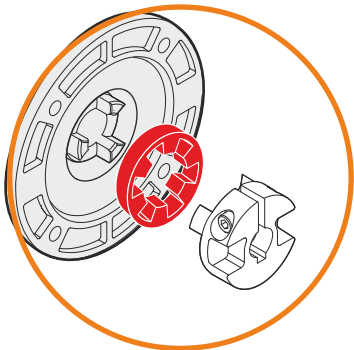
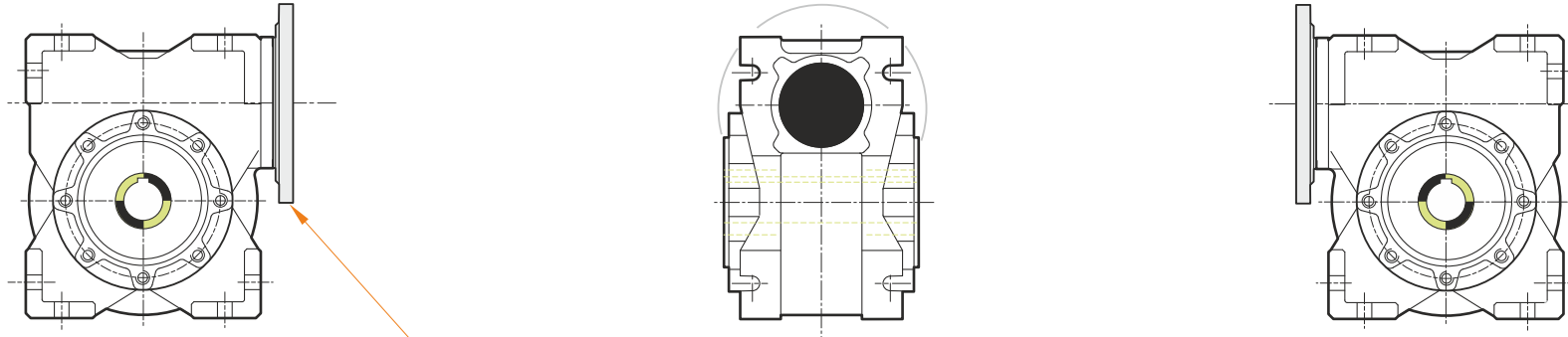
#### Electric motor coupling

Size		80 B4
Poles n.		4
Power	[kW]	0.75

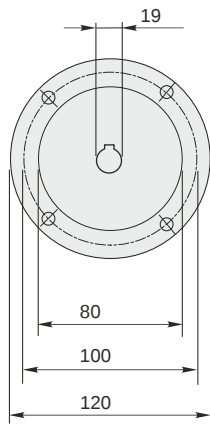


Hollow output shaft





This gear unit is provided with an elastic coupling motor fitting



**F RT 60 B3 28 80 B14 AC 25**

### Mounting positions

B3

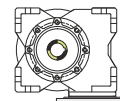
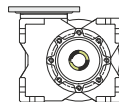
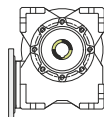
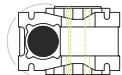
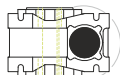
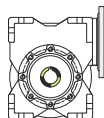
B6

B7

B8

V5

V6



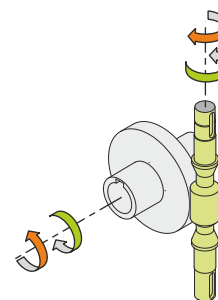
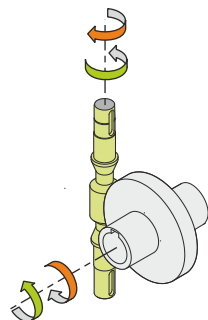
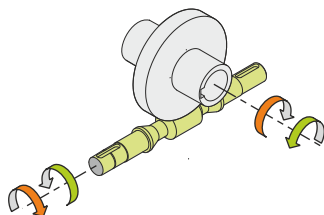
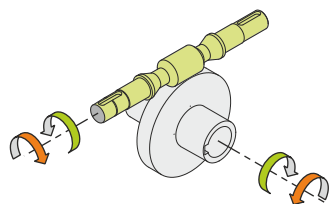
0.23



← Oil quantity [litres]

Lubricant type: Long life synthetic oil ISO VG320

### Direction of rotation



### Weight

Gear unit [kg] 6.5

### Gearing data

Axial module	3.3
Number of starts	1
Lead angle	6° 49'
Pressure angle	20°

### Backdriving

Static self-locking  
Slow back-driving in case of vibrations  
Low dynamic back-driving