

Input data

System of measurement		Metric
Input type		Coupling for electric motor
Input speed	[rpm]	1400
Output speed	[rpm]	35
Ratio (i=)		40
Frequency	[Hz]	50
Input options		IEC
Requested input power	[kW]	0.55
Service factor		1.4
Rated Power P1	[kW]	0.75

Output data

Gear unit **F RT 60 B3 40 80 B14 AC 25**

Type		RT - Worm speed reducers
Input type		F (Elastic coupling)
Size		60
Ratio (i=)		40
Input flange		B14
Input speed	[rpm]	1400
Output speed	[rpm]	35
Rated output torque	[Nm]	99.05
Service Factor		1.4
Efficiency		0.66
Inertia moment	[kgm ²]	0.000104

Gear unit configuration

Output shaft		Hollow output shaft
Fixing		Universal
Version		B3

Output radial and axial loads

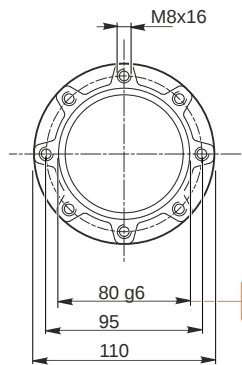
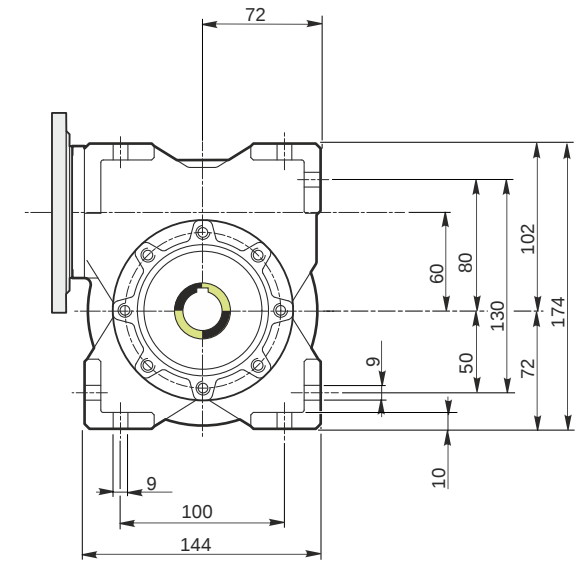
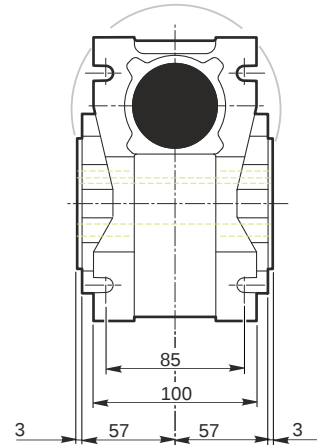
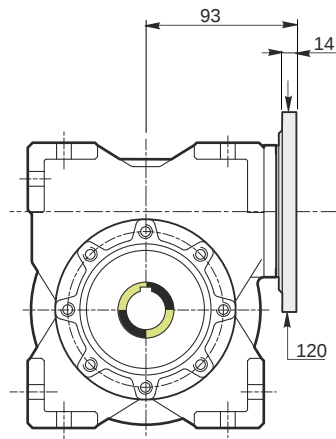
Ball bearings output radial load	[N]	3900
Taper bearings output radial load	[N]	5100
Ball bearings output axial load	[N]	780
Taper bearings output axial load	[N]	1020

Accessories

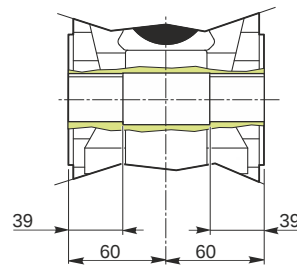
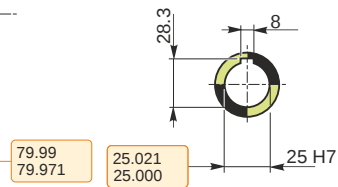
Hollow output shaft		AC 25
---------------------	--	-------

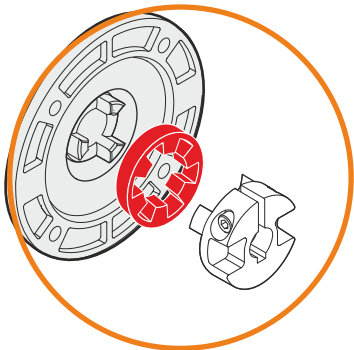
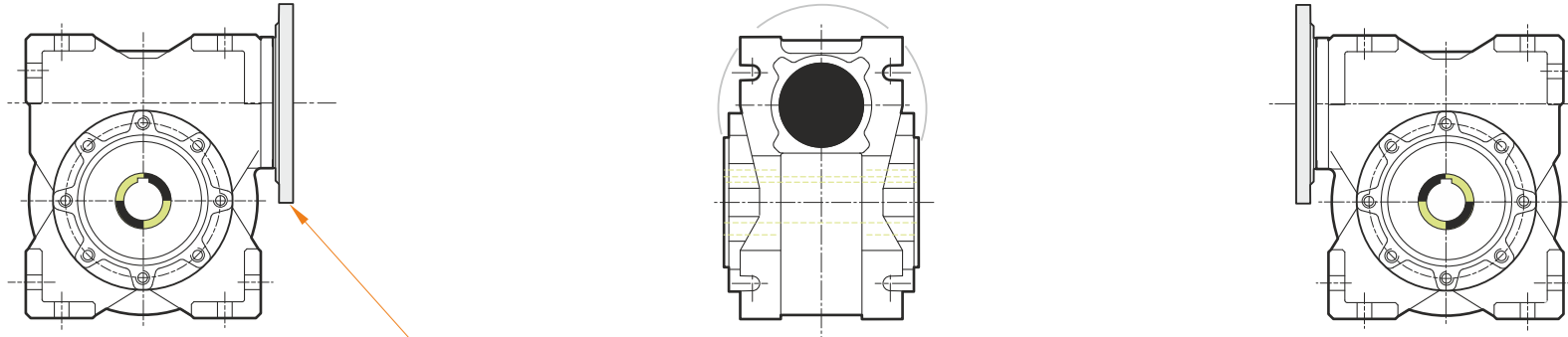
Electric motor coupling

Size		80 A4
Poles n.		4
Power	[kW]	0.55

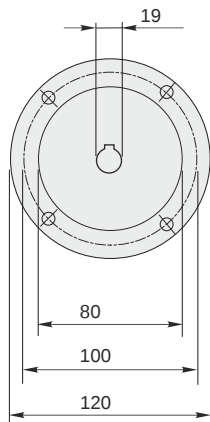


Hollow output shaft





This gear unit is provided with an elastic coupling motor fitting



Mounting positions

B3

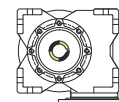
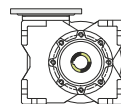
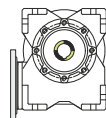
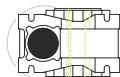
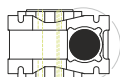
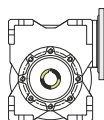
B6

B7

B8

V5

V6



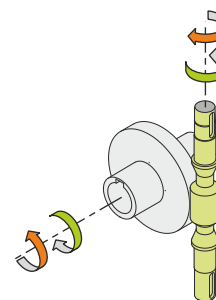
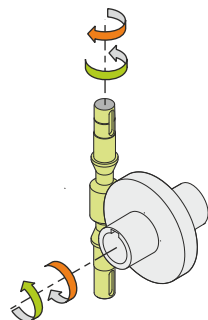
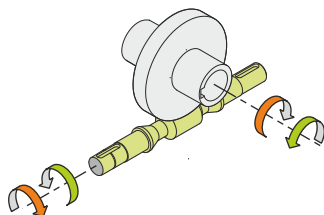
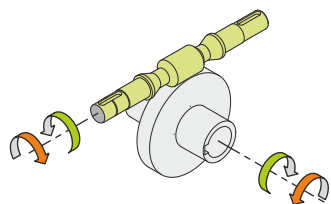
0.23



← Oil quantity [litres]

Lubricant type: Long life synthetic oil ISO VG320

Direction of rotation



Weight

Gear unit [kg] 6.5

Gearing data

Axial module	2.4
Number of starts	1
Lead angle	5° 42'
Pressure angle	20°

Backdriving

Static self-locking
Slow back-driving in case of vibrations
Low dynamic back-driving