

### Input data

System of measurement		Metric
Input type		Coupling for electric motor
Input speed	[rpm]	1400
Output speed	[rpm]	17.5
Ratio (i=)		80
Frequency	[Hz]	50
Input options		IEC
Requested input power	[kW]	0.37
Service factor		1
Rated Power P1	[kW]	0.37

### Output data

#### Gear unit **F RT 60 B3 80 71 B14 AC 25**

Type		RT - Worm speed reducers
Input type		F (Elastic coupling)
Size		60
Ratio (i=)		80
Input flange		B14
Input speed	[rpm]	1400
Output speed	[rpm]	17.5
Rated output torque	[Nm]	107.01
Service Factor		1
Efficiency		0.53
Inertia moment	[kgm <sup>2</sup> ]	0.000104

#### Gear unit configuration

Output shaft		Hollow output shaft
Fixing		Universal
Version		B3

#### Output radial and axial loads

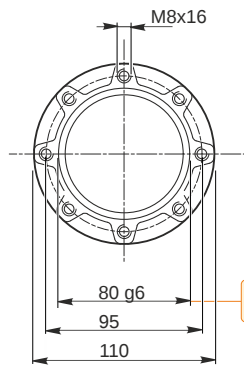
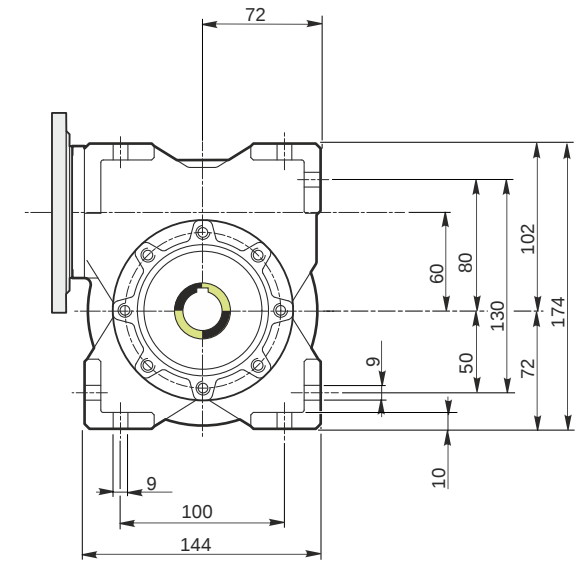
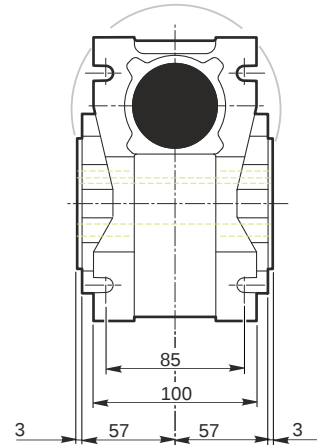
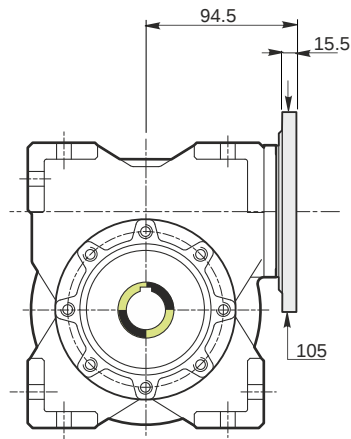
Ball bearings output radial load	[N]	5300
Taper bearings output radial load	[N]	6600
Ball bearings output axial load	[N]	1060
Taper bearings output axial load	[N]	1320

#### Accessories

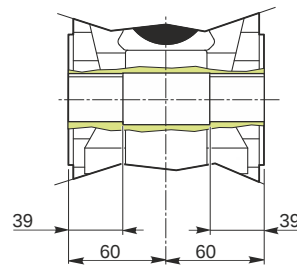
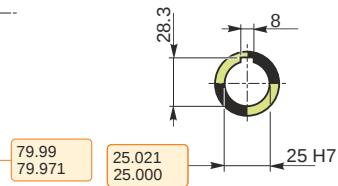
Hollow output shaft		AC 25
---------------------	--	-------

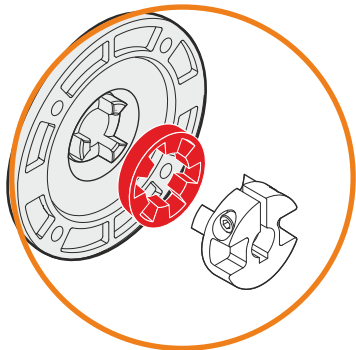
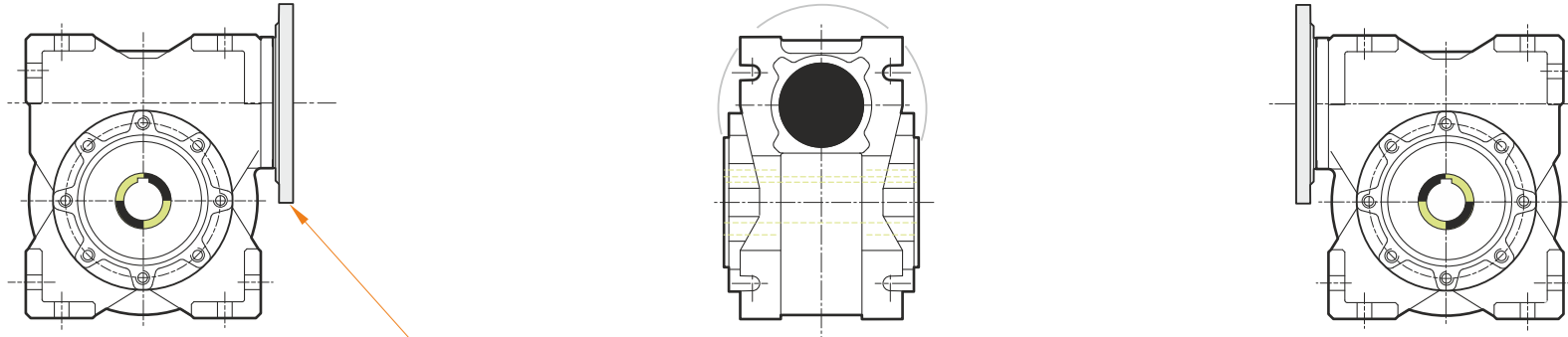
#### Electric motor coupling

Size		71 B4
Poles n.		4
Power	[kW]	0.37

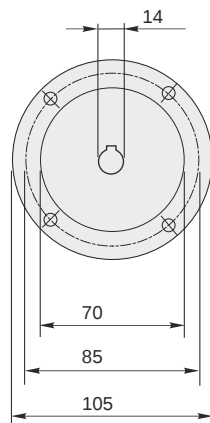


*Hollow output shaft*



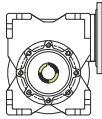


This gear unit is provided with an elastic coupling motor fitting

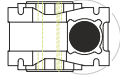


**Mounting positions**

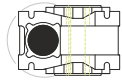
**B3**



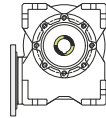
**B6**



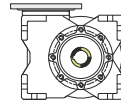
**B7**



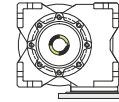
**B8**



**V5**



**V6**



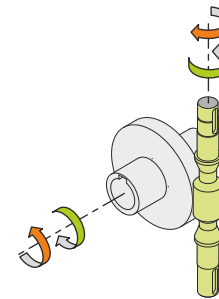
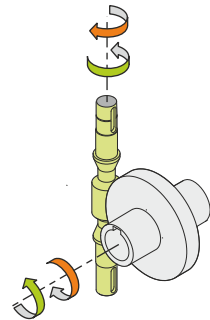
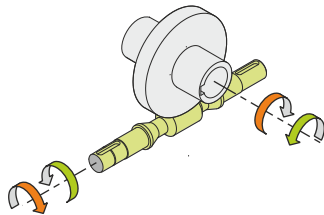
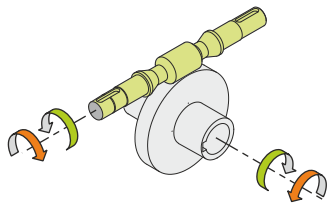
0.23



← Oil quantity [litres]

Lubricant type: Long life synthetic oil ISO VG320

**Direction of rotation**



**Weight**

Gear unit [kg] 6.5

**Gearing data**

Axial module	1.2
Number of starts	1
Lead angle	2° 51'
Pressure angle	20°

**Backdriving**

Static self-locking  
No back-driving  
Low dynamic back-driving