

Input data

System of measurement		Metric
Input type		Coupling for electric motor
Input speed	[rpm]	1400
Output speed	[rpm]	200
Ratio (i=)		7
Frequency	[Hz]	50
Input options		IEC
Requested input power	[kW]	2.2
Service factor		1.8
Rated Power P1	[kW]	3.95

Output data

Gear unit **F RT 70 B3 7 100 B14 AC 28**

Type		RT - Worm speed reducers
Input type		F (Elastic coupling)
Size		70
Ratio (i=)		7
Input flange		B14
Input speed	[rpm]	1400
Output speed	[rpm]	200
Rated output torque	[Nm]	92.44
Service Factor		1.8
Efficiency		0.88
Inertia moment	[kgm ²]	0.000306

Gear unit configuration

Output shaft		Hollow output shaft
Fixing		Universal
Version		B3

Output radial and axial loads

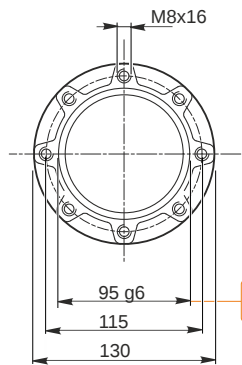
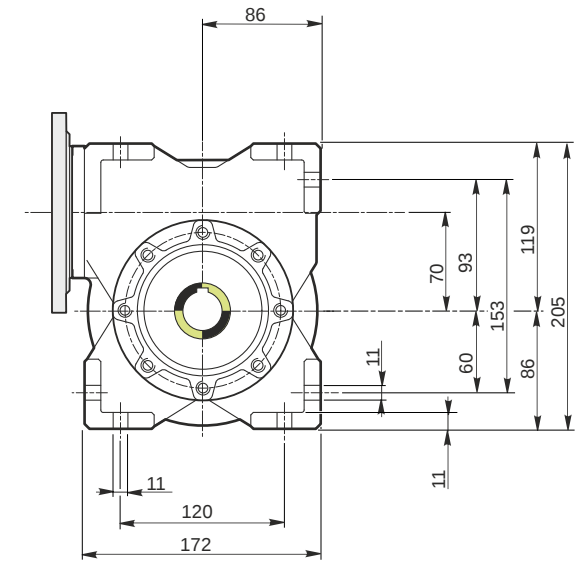
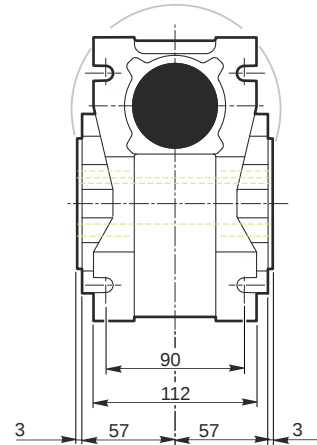
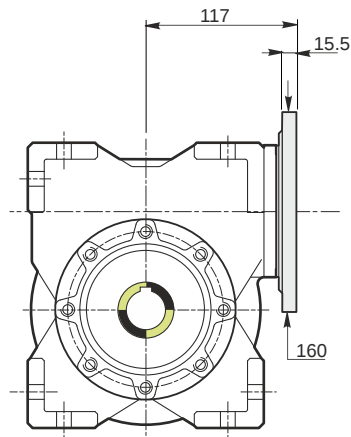
Ball bearings output radial load	[N]	2700
Taper bearings output radial load	[N]	3300
Ball bearings output axial load	[N]	540
Taper bearings output axial load	[N]	660

Accessories

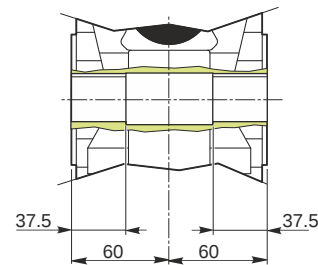
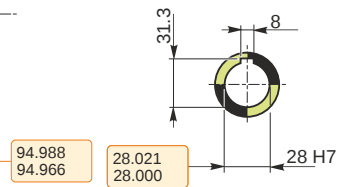
Hollow output shaft		AC 28
---------------------	--	-------

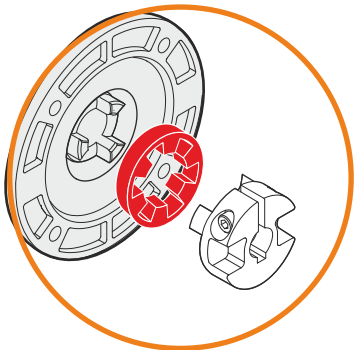
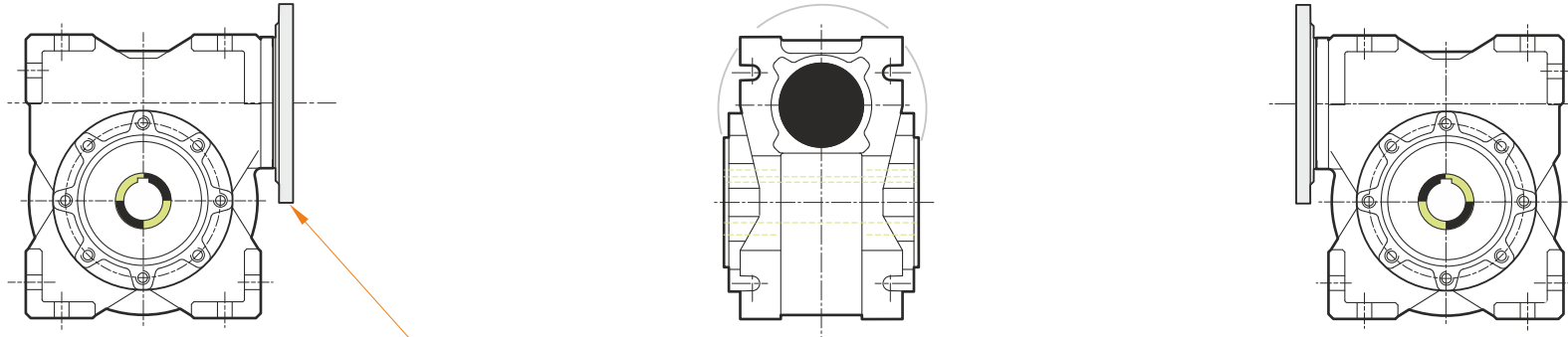
Electric motor coupling

Size		100 A4
Poles n.		4
Power	[kW]	2.2

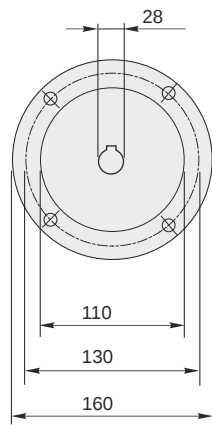


Hollow output shaft





This gear unit is provided with an elastic coupling motor fitting



F RT 70 B3 7 100 B14 AC 28

Mounting positions

B3

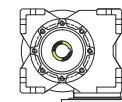
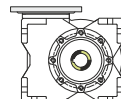
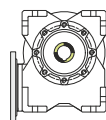
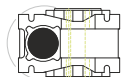
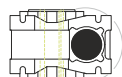
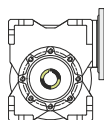
B6

B7

B8

V5

V6



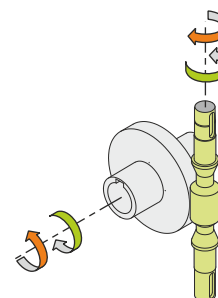
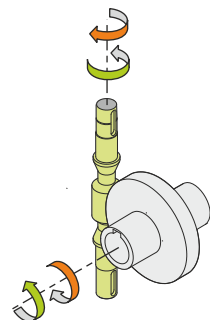
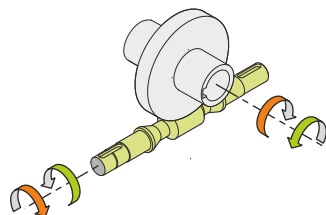
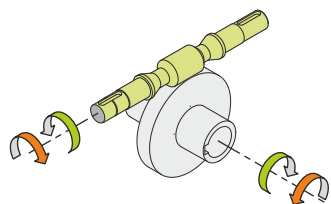
0.35



← Oil quantity [litres]

Lubricant type: Long life synthetic oil ISO VG320

Direction of rotation



Weight

Gear unit [kg] 9

Gearing data

Axial module	3.9
Number of starts	4
Lead angle	26° 51'
Pressure angle	20°

Backdriving

Static back-driving
Quick back-driving
Dynamic back-driving