

### Input data

System of measurement		Metric
Input type		Coupling for electric motor
Input speed	[rpm]	1400
Output speed	[rpm]	70
Ratio (i=)		20
Frequency	[Hz]	50
Input options		IEC
Requested input power	[kW]	1.5
Service factor		1.2
Rated Power P1	[kW]	1.76

### Output data

#### **Gear unit** F RT 70 B3 20 90 B14 AC 28

Type		RT - Worm speed reducers
Input type		F (Elastic coupling)
Size		70
Ratio (i=)		20
Input flange		B14
Input speed	[rpm]	1400
Output speed	[rpm]	70
Rated output torque	[Nm]	165.76
Service Factor		1.2
Efficiency		0.81
Inertia moment	[kgm <sup>2</sup> ]	0.000251

#### **Gear unit configuration**

Output shaft		Hollow output shaft
Fixing		Universal
Version		B3

#### **Output radial and axial loads**

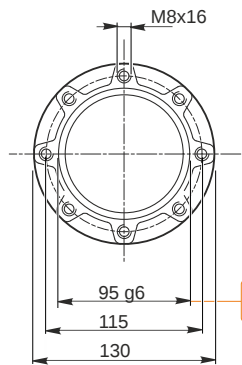
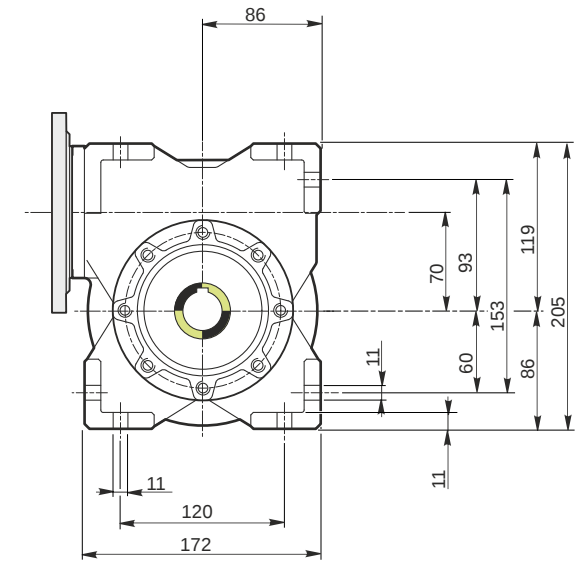
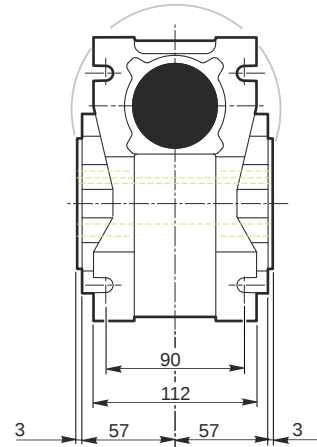
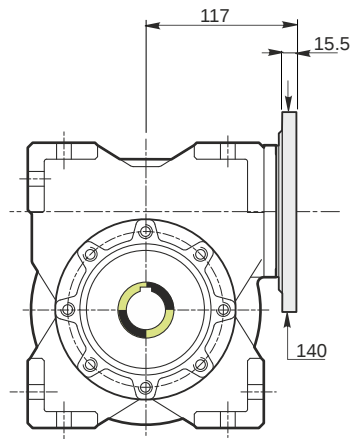
Ball bearings output radial load	[N]	3900
Taper bearings output radial load	[N]	5160
Ball bearings output axial load	[N]	780
Taper bearings output axial load	[N]	1032

#### **Accessories**

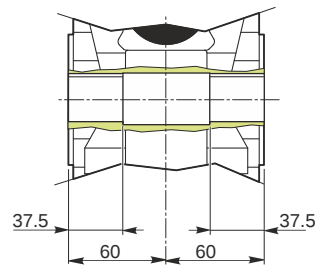
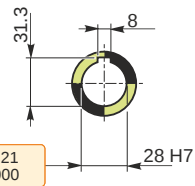
Hollow output shaft		AC 28
---------------------	--	-------

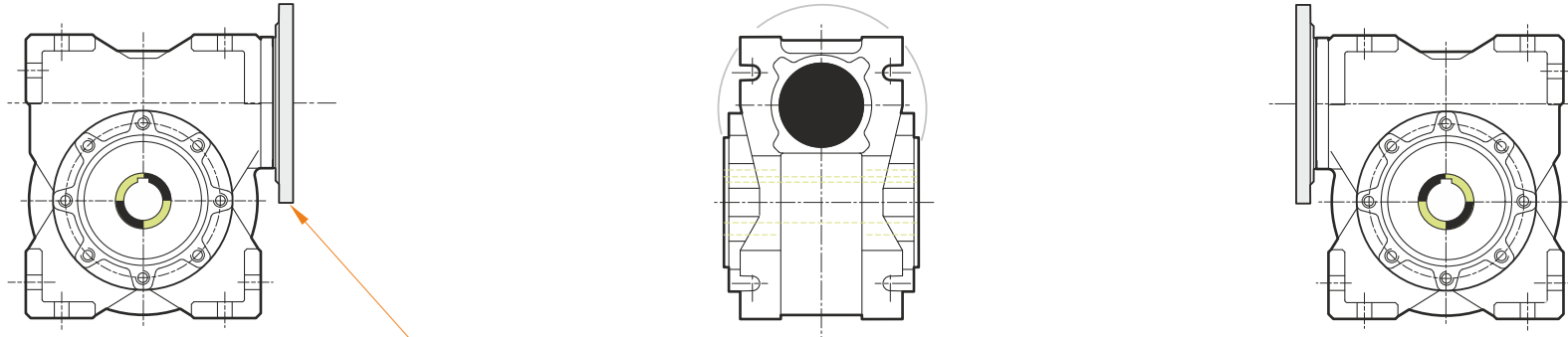
#### **Electric motor coupling**

Size		90 L4
Poles n.		4
Power	[kW]	1.5

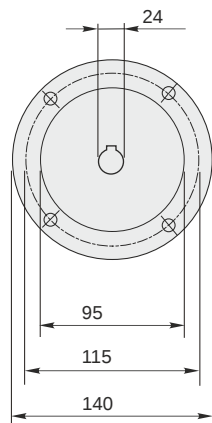


*Hollow output shaft*



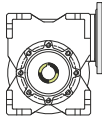


This gear unit is provided with an elastic coupling motor fitting

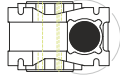


**Mounting positions**

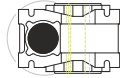
**B3**



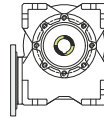
**B6**



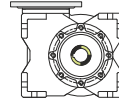
**B7**



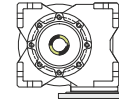
**B8**



**V5**



**V6**



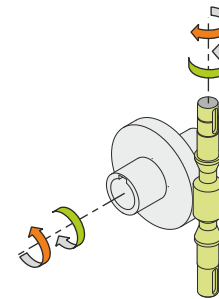
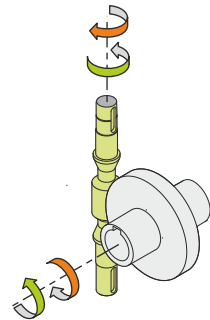
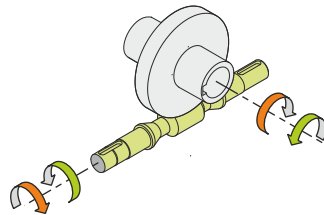
0.35



← Oil quantity [litres]

Lubricant type: Long life synthetic oil ISO VG320

**Direction of rotation**



**Weight**

Gear unit [kg] 9

**Gearing data**

Axial module	2.8
Number of starts	2
Lead angle	11° 18'
Pressure angle	20°

**Backdriving**

Variable static self-locking  
Quick back-driving in case of vibrations  
Dynamic back-driving