

Input data

System of measurement		Metric
Input type		Coupling for electric motor
Input speed	[rpm]	1400
Output speed	[rpm]	17.5
Ratio (i=)		80
Frequency	[Hz]	50
Input options		IEC
Requested input power	[kW]	0.75
Service factor		1.1
Rated Power P1	[kW]	0.86

Output data

Gear unit **F RT 85 B3 80 80 B14 AC 32**

Type		RT - Worm speed reducers
Input type		F (Elastic coupling)
Size		85
Ratio (i=)		80
Input flange		B14
Input speed	[rpm]	1400
Output speed	[rpm]	17.5
Rated output torque	[Nm]	245.57
Service Factor		1.1
Efficiency		0.6
Inertia moment	[kgm ²]	0.00034

Gear unit configuration

Output shaft		Hollow output shaft
Fixing		Universal
Version		B3

Output radial and axial loads

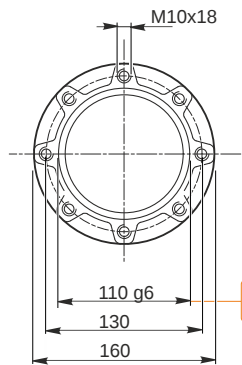
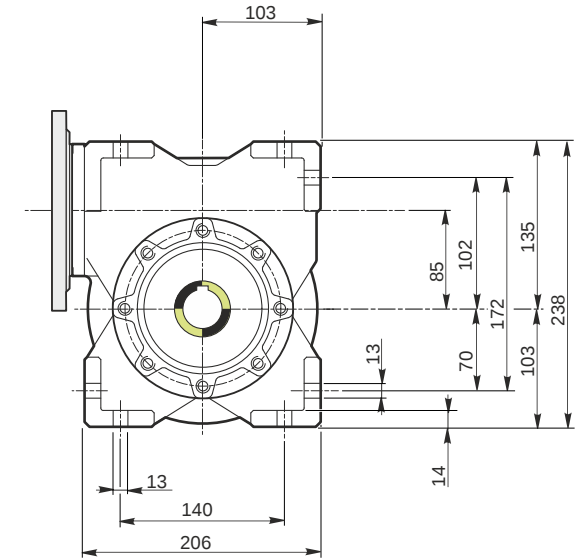
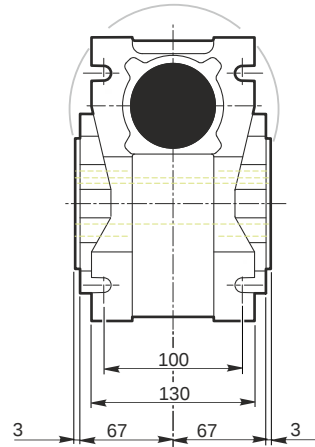
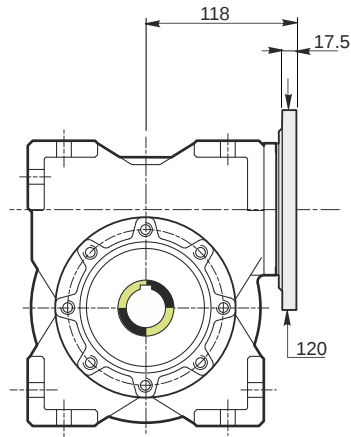
Ball bearings output radial load	[N]	7500
Taper bearings output radial load	[N]	9400
Ball bearings output axial load	[N]	1500
Taper bearings output axial load	[N]	1880

Accessories

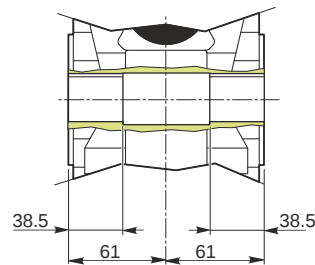
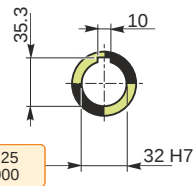
Hollow output shaft		AC 32
---------------------	--	-------

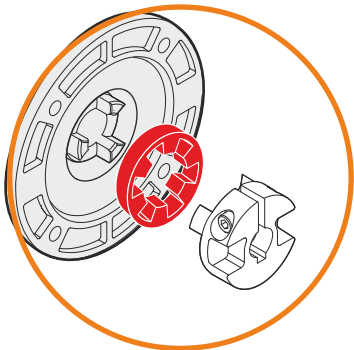
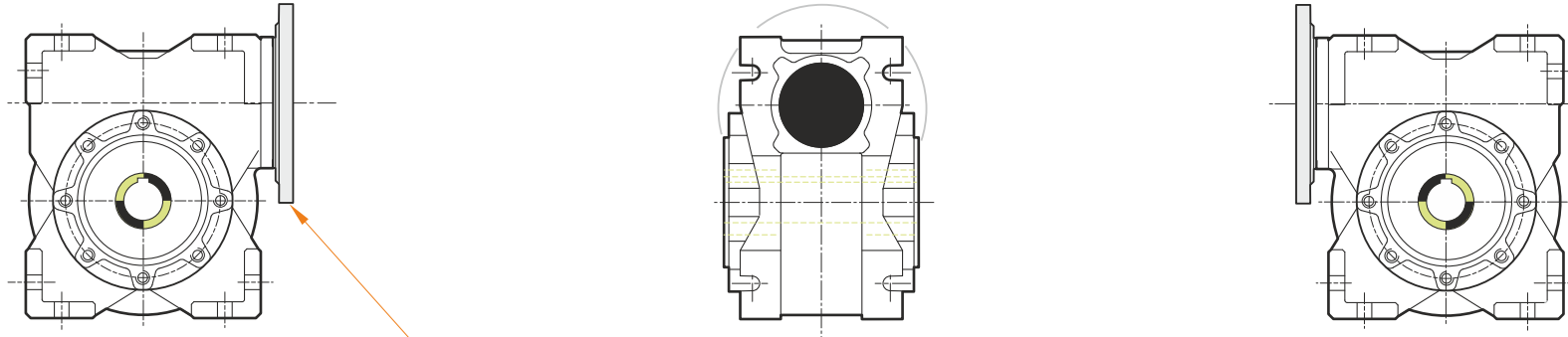
Electric motor coupling

Size		80 B4
Poles n.		4
Power	[kW]	0.75

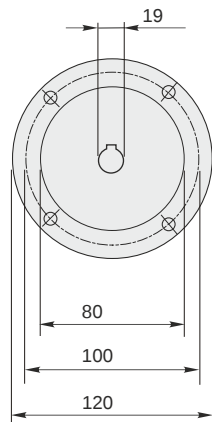


Hollow output shaft



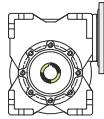


This gear unit is provided with an elastic coupling motor fitting

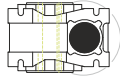


Mounting positions

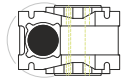
B3



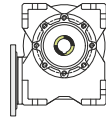
B6



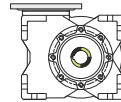
B7



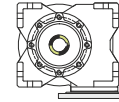
B8



V5



V6



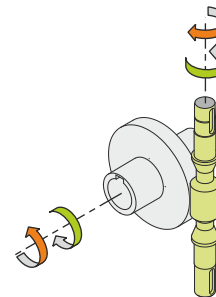
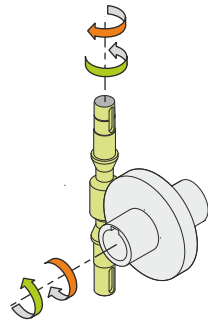
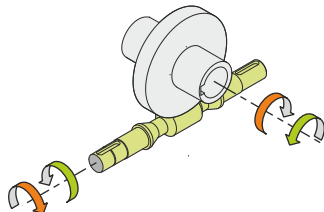
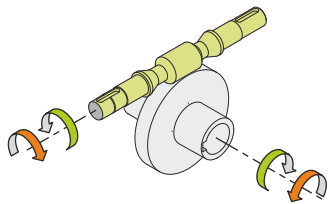
0.6



← Oil quantity [litres]

Lubricant type: Long life synthetic oil ISO VG320

Direction of rotation



Weight

Gear unit [kg] 13.5

Gearing data

Axial module	1.74
Number of starts	1
Lead angle	3° 14'
Pressure angle	20°

Backdriving

Static self-locking
Slow back-driving in case of vibrations
Low dynamic back-driving