

### Input data

System of measurement		Metric
Input type		Gear motor
Input speed	[rpm]	1400
Output speed	[rpm]	70
Ratio (i=)		20
Frequency	[Hz]	50
Input options		IEC
Requested input power	[kW]	0.55
Service factor		1.1
Rated Power P1	[kW]	0.63

### Output data

**Gear unit** **M RT 50 B3 20 80 B14 AC 24 MT 0.55 kW 80 A4 B14 X3**

Type		RT - Worm speed reducers
Input type		M
Size		50
Ratio (i=)		20
Input flange		B14
Input speed	[rpm]	1400
Output speed	[rpm]	70
Rated output torque	[Nm]	57.03
Service Factor		1.1
Efficiency		0.76
Inertia moment	[kgm <sup>2</sup> ]	0.000049

#### Gear unit configuration

Output shaft		Hollow output shaft
Fixing		Universal
Version		B3

#### Output radial and axial loads

Ball bearings output radial load	[N]	1900
Taper bearings output radial load	[N]	2600
Ball bearings output axial load	[N]	380
Taper bearings output axial load	[N]	520

#### Accessories

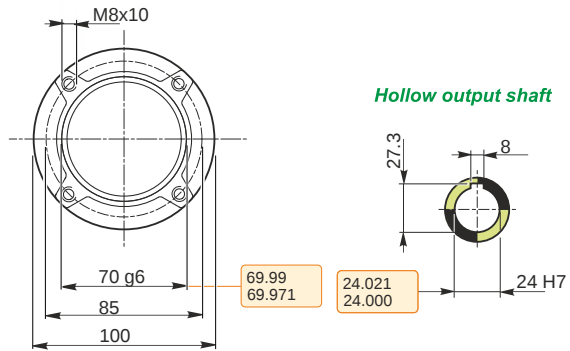
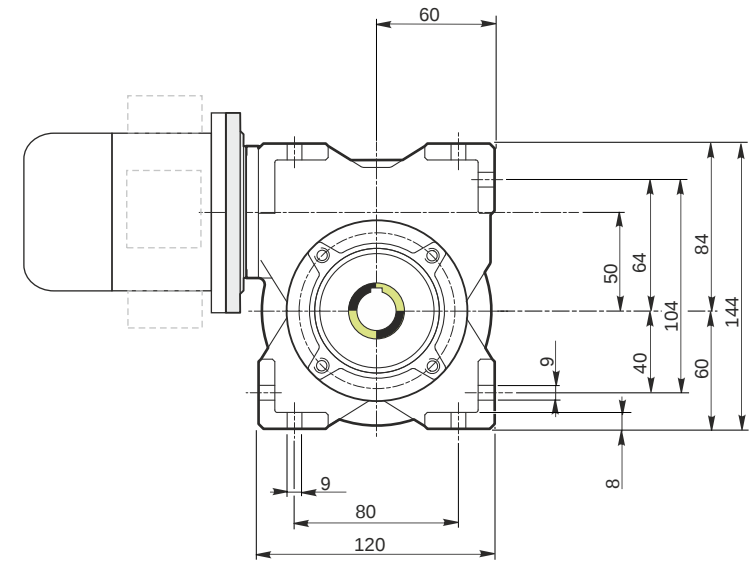
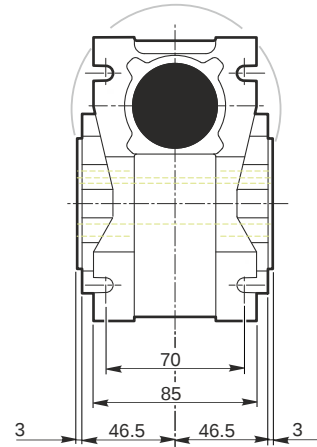
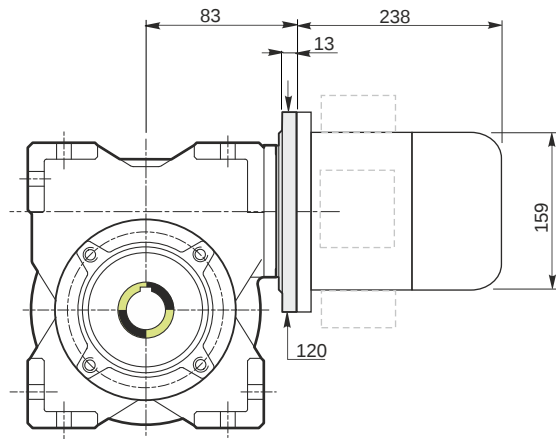
Hollow output shaft		AC 24
---------------------	--	-------

#### Electric motor

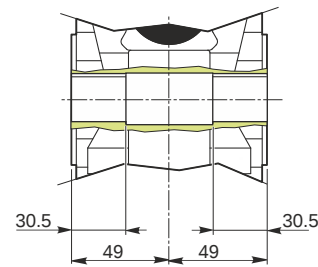
Size		80 A4
Poles		4
Power	[kW]	0.55

#### Electric motor configuration

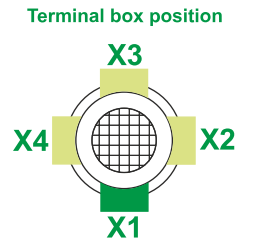
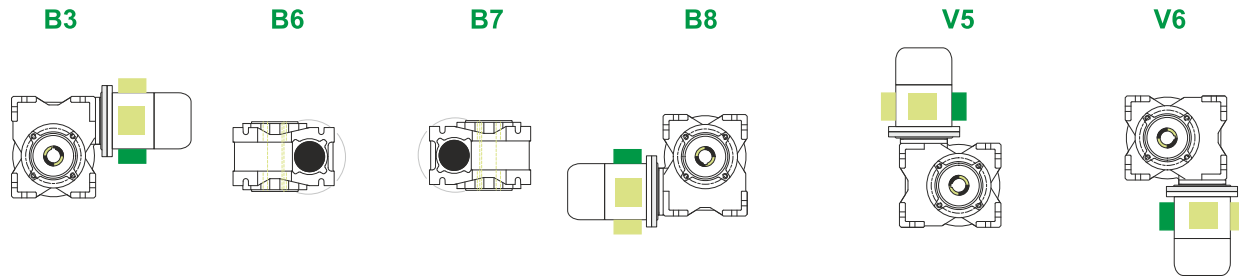
Motor flange		B14
Terminal box position		X3



Hollow output shaft



**Mounting positions**



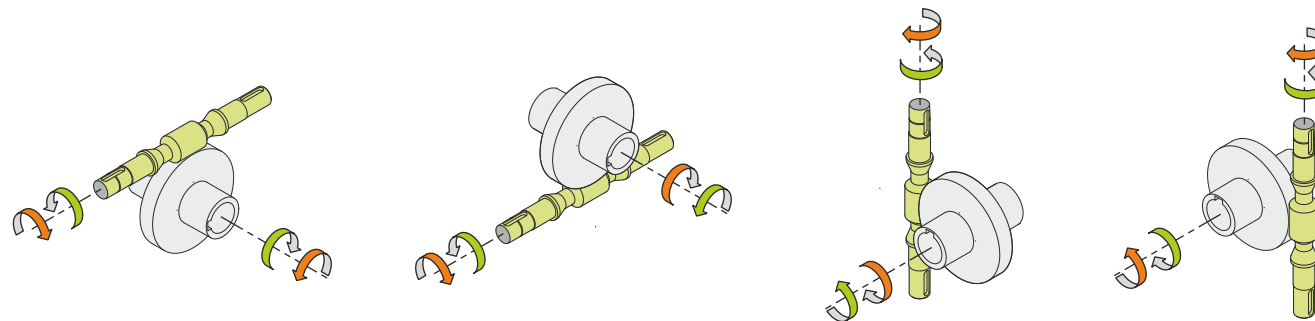
0.13



← Oil quantity [litres]

Lubricant type: Long life synthetic oil ISO VG320

**Direction of rotation**



**Weight**

Gear unit [kg]	3.8
Electric motor [kg]	9.8

**Gearing data**

Axial module	1.9
Number of starts	2
Lead angle	8° 59'
Pressure angle	20°

**Backdriving**

Variable static self-locking  
Quick back-driving in case of vibrations  
Dynamic back-driving

**M RT 50 B3 20 80 B14 AC 24 MT 0.55 kW 80 A4 B14 X3**