

Input data

System of measurement		Metric
Input type		Gear motor
Input speed	[rpm]	1400
Output speed	[rpm]	14
Ratio (i=)		100
Frequency	[Hz]	50
Input options		IEC
Requested input power	[kW]	0.13
Service factor		1
Rated Power P1	[kW]	0.13

Output data

Gear unit M RT 50 B3 100 63 B14 AC 24 MT 0.13 kW 63 A4 B14 X3

Type		RT - Worm speed reducers
Input type		M
Size		50
Ratio (i=)		100
Input flange		B14
Input speed	[rpm]	1400
Output speed	[rpm]	14
Rated output torque	[Nm]	41.68
Service Factor		1
Efficiency		0.47
Inertia moment	[kgm ²]	0.000047

Gear unit configuration

Output shaft		Hollow output shaft
Fixing		Universal
Version		B3

Output radial and axial loads

Ball bearings output radial load	[N]	3200
Taper bearings output radial load	[N]	4200
Ball bearings output axial load	[N]	640
Taper bearings output axial load	[N]	840

Accessories

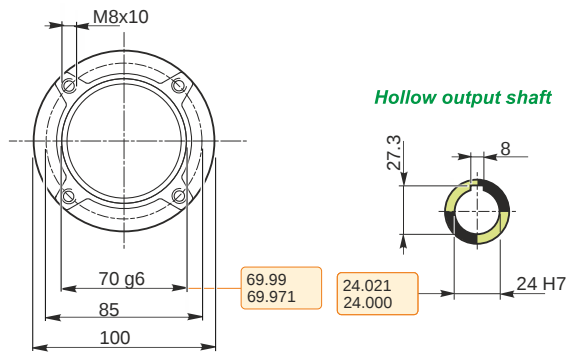
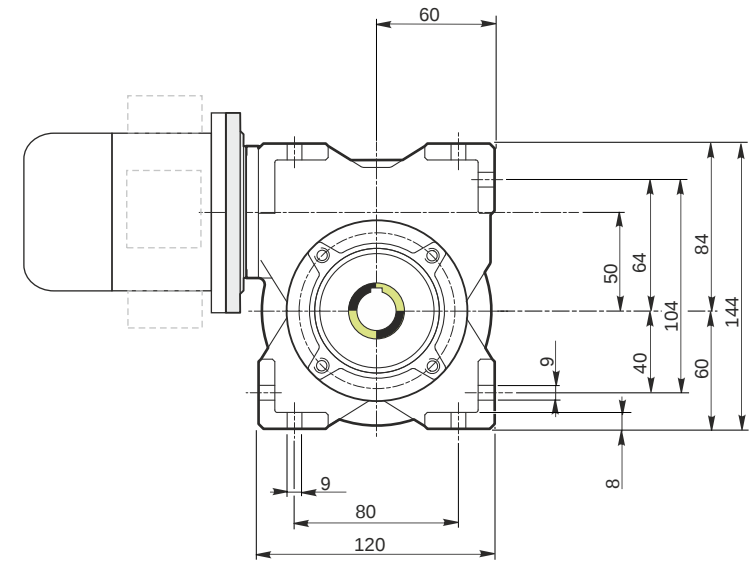
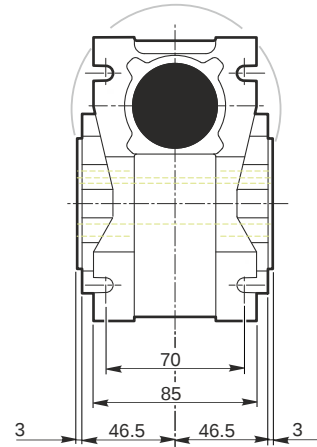
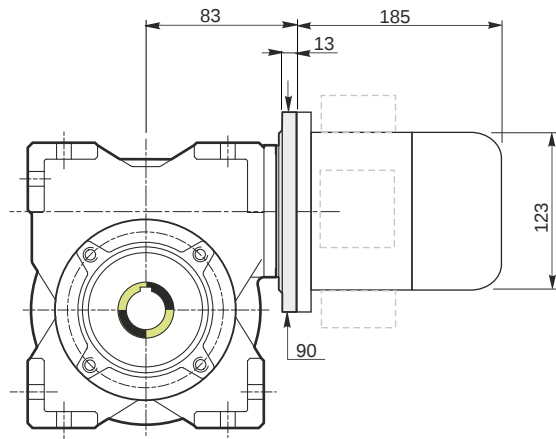
Hollow output shaft		AC 24
---------------------	--	-------

Electric motor

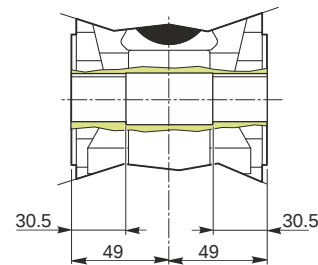
Size		63 A4
Poles		4
Power	[kW]	0.13

Electric motor configuration

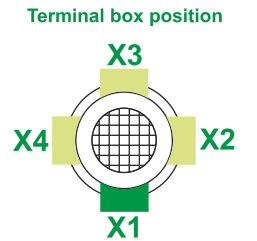
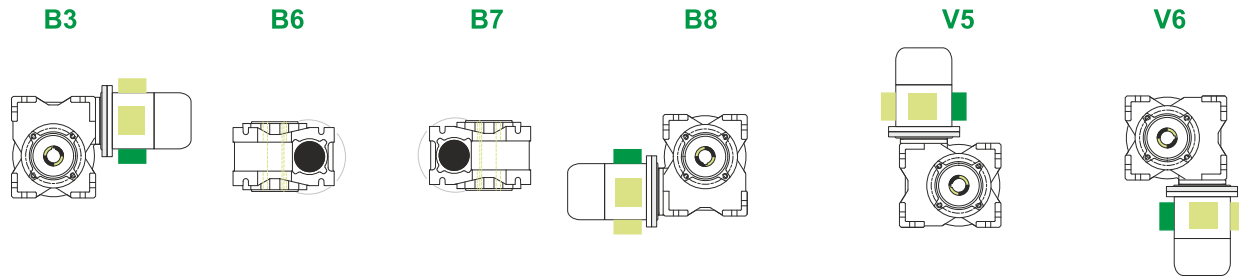
Motor flange		B14
Terminal box position		X3



Hollow output shaft



Mounting positions



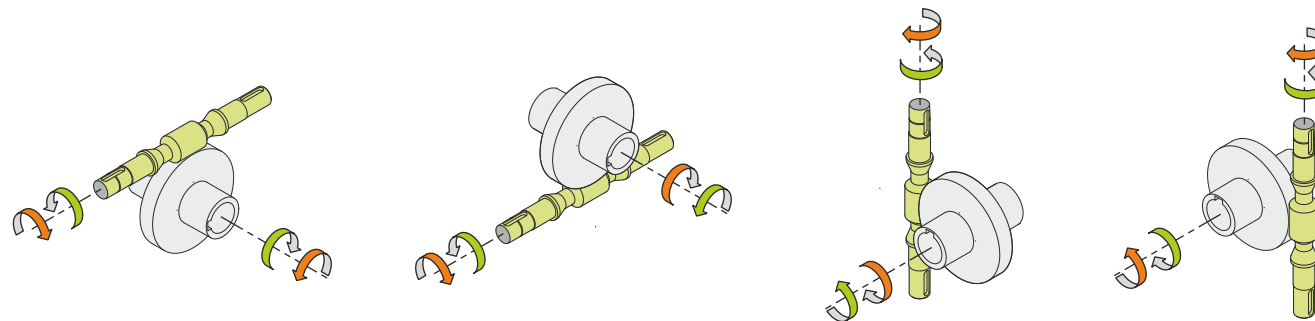
0.13



← Oil quantity [litres]

Lubricant type: Long life synthetic oil ISO VG320

Direction of rotation



Weight

Gear unit [kg]	3.8
Electric motor [kg]	4.3

Gearing data

Axial module	0.8
Number of starts	1
Lead angle	2° 17'
Pressure angle	20°

Backdriving

Static self-locking
No back-driving
Low dynamic back-driving

M RT 50 B3 100 63 B14 AC 24 MT 0.13 kW 63 A4 B14 X3