

### Input data

System of measurement		Metric
Input type		Coupling for electric motor
Input speed	[rpm]	1400
Output speed	[rpm]	35
Ratio (i=)		40
Frequency	[Hz]	50
Input options		IEC
Requested input power	[kW]	0.75
Service factor		1
Rated Power P1	[kW]	0.75

### Output data

#### **Gear unit** F RS 60 PC 40 80 B14 AC 25 B3

Type		RS - Worm speed reducers
Input type		F (Elastic coupling)
Size		60
Ratio (i=)		40
Input flange		B14
Mounting position		B3
Input speed	[rpm]	1400
Output speed	[rpm]	35
Rated output torque	[Nm]	135.06
Service Factor		1
Efficiency		0.66
Inertia moment	[kgm <sup>2</sup> ]	0.000104

#### **Gear unit configuration**

Output shaft		Hollow output shaft
Fixing		Shaft mounting
Version		PC

#### **Output radial and axial loads**

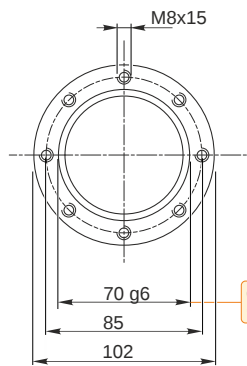
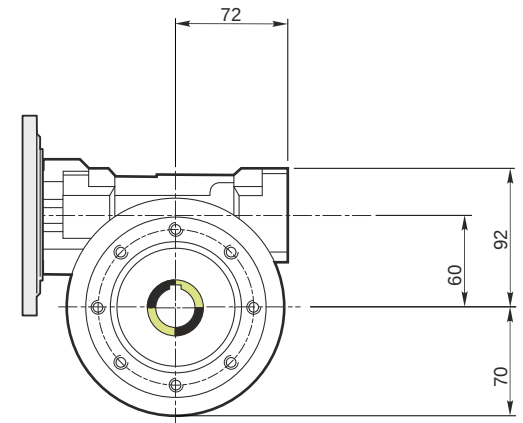
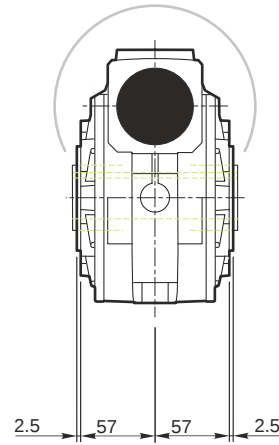
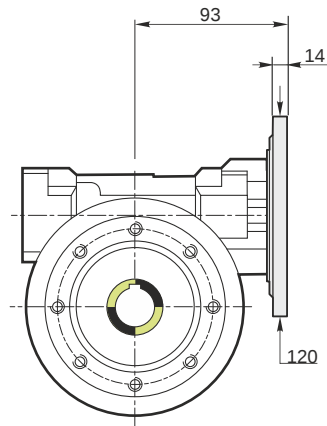
Ball bearings output radial load	[N]	3900
Taper bearings output radial load	[N]	5100
Ball bearings output axial load	[N]	780
Taper bearings output axial load	[N]	1020

#### **Accessories**

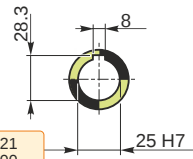
Hollow output shaft		AC 25
---------------------	--	-------

#### **Electric motor coupling**

Size		80 B4
Poles n.		4
Power	[kW]	0.75

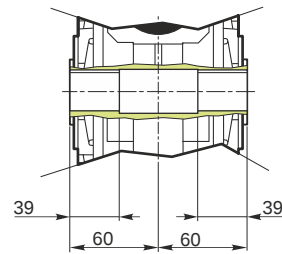


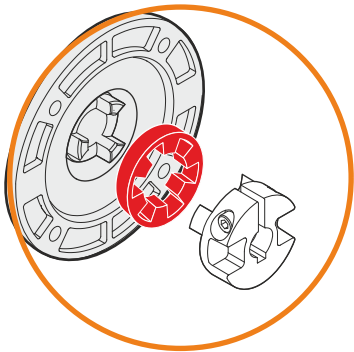
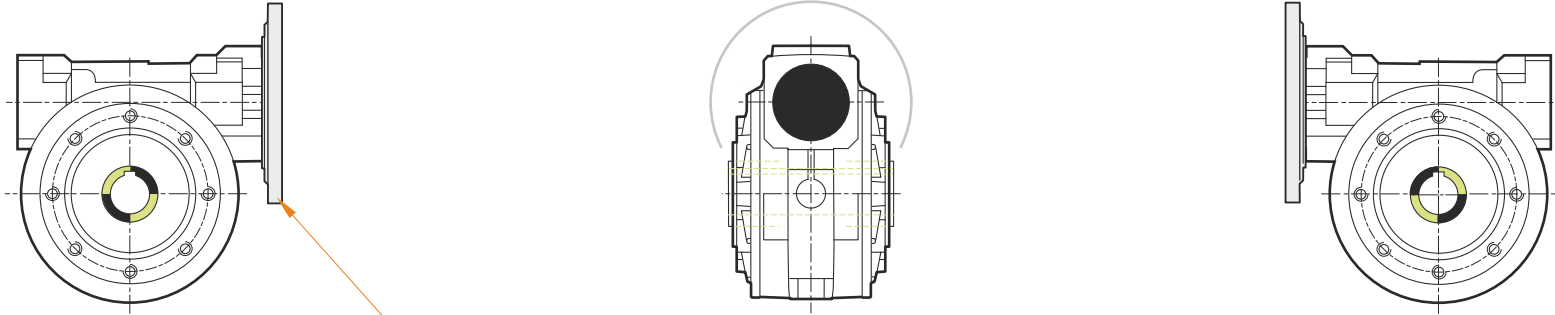
Hollow output shaft



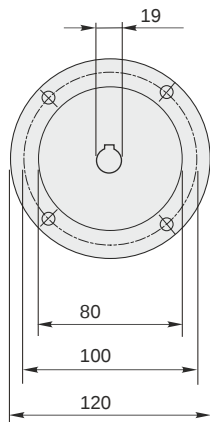
69.99  
69.971

25.021  
25.000



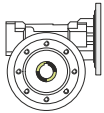


This gear unit is provided with an elastic coupling motor fitting



**Mounting positions**

**B3**



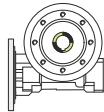
**B6**



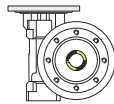
**B7**



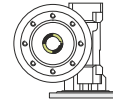
**B8**



**V5**



**V6**



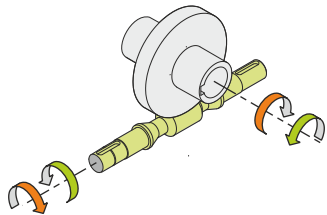
0.23



← Oil quantity [litres]

Lubricant type: Long life synthetic oil ISO VG320

**Direction of rotation**



**Weight**

Gear unit [kg] 6.5

**Gearing data**

Axial module	2.4
Number of starts	1
Lead angle	5° 42'
Pressure angle	20°

**Backdriving**

Static self-locking  
Slow back-driving in case of vibrations  
Low dynamic back-driving