

### Input data

System of measurement		Metric
Input type		Coupling for electric motor
Input speed	[rpm]	1400
Output speed	[rpm]	140
Ratio (i=)		10
Frequency	[Hz]	50
Input options		IEC
Requested input power	[kW]	3
Service factor		1
Rated Power P1	[kW]	3.07

### Output data

#### **Gear unit** F RS 70 PC 10 100 B14 AC 28 B3

Type		RS - Worm speed reducers
Input type		F (Elastic coupling)
Size		70
Ratio (i=)		10
Input flange		B14
Mounting position		B3
Input speed	[rpm]	1400
Output speed	[rpm]	140
Rated output torque	[Nm]	175.99
Service Factor		1
Efficiency		0.86
Inertia moment	[kgm <sup>2</sup> ]	0.000274

#### **Gear unit configuration**

Output shaft		Hollow output shaft
Fixing		Shaft mounting
Version		PC

#### **Output radial and axial loads**

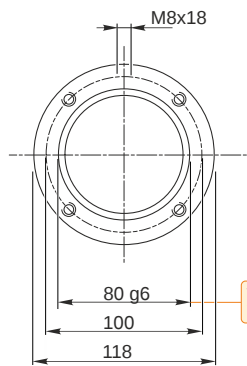
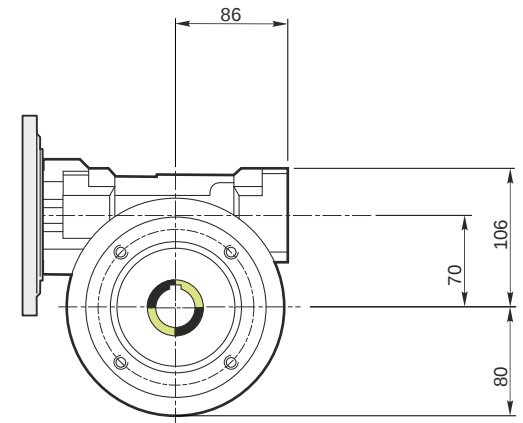
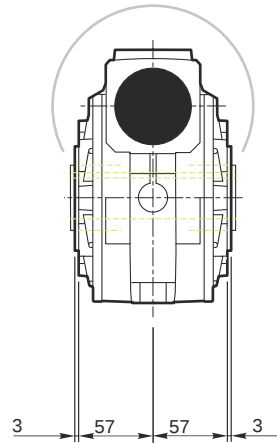
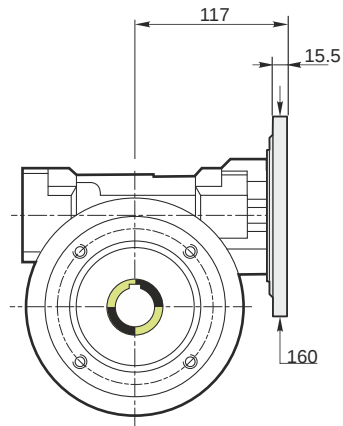
Ball bearings output radial load	[N]	2900
Taper bearings output radial load	[N]	3700
Ball bearings output axial load	[N]	580
Taper bearings output axial load	[N]	740

#### **Accessories**

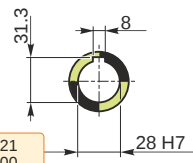
Hollow output shaft		AC 28
---------------------	--	-------

#### **Electric motor coupling**

Size		100 B4
Poles n.		4
Power	[kW]	3

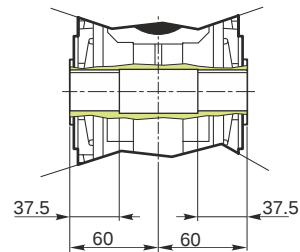


Hollow output shaft

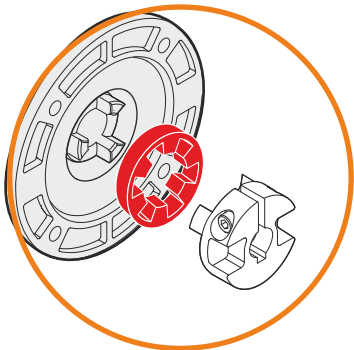
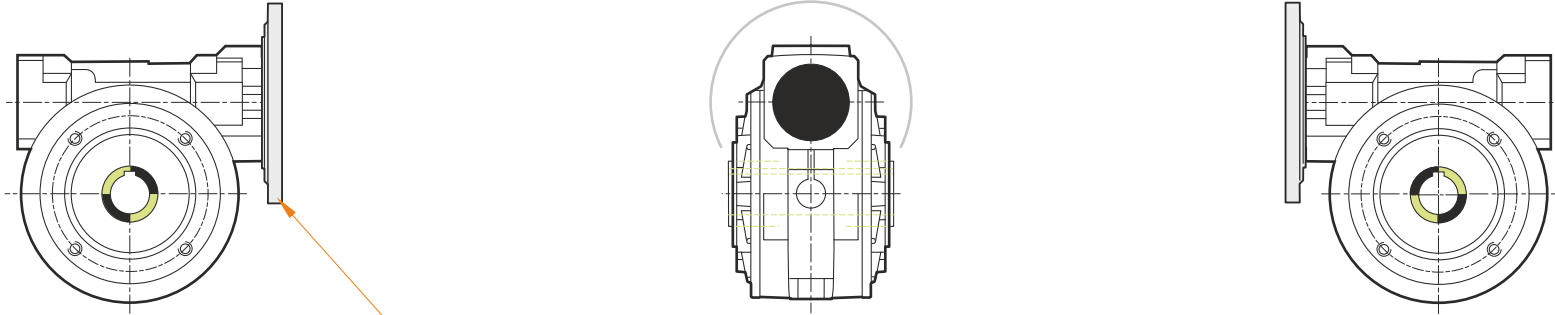


79.99  
79.971

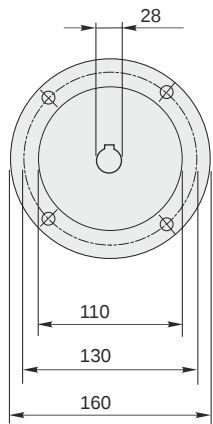
28.021  
28.000



**F RS 70 PC 10 100 B14 AC 28 B3**

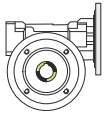


This gear unit is provided with an elastic coupling motor fitting

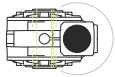


**Mounting positions**

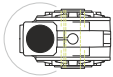
**B3**



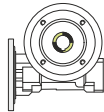
**B6**



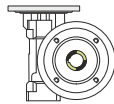
**B7**



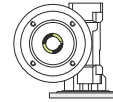
**B8**



**V5**



**V6**



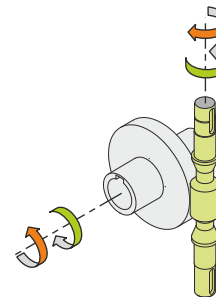
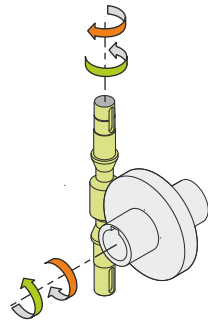
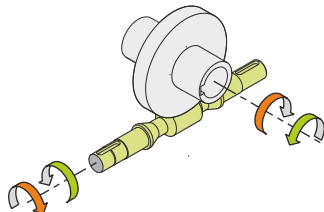
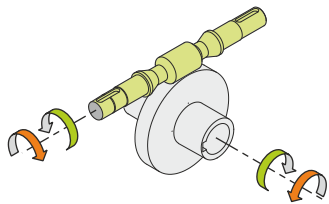
0.35



← Oil quantity [litres]

Lubricant type: Long life synthetic oil ISO VG320

**Direction of rotation**



**Weight**

Gear unit [kg] 9

**Gearing data**

Axial module	3.6
Number of starts	3
Lead angle	18° 38'
Pressure angle	20°

**Backdriving**

Static back-driving  
Quick back-driving  
Dynamic back-driving