

Input data

| | | |
|-----------------------|-------|-----------------------------|
| System of measurement | | Metric |
| Input type | | Coupling for electric motor |
| Input speed | [rpm] | 1400 |
| Output speed | [rpm] | 70 |
| Ratio (i=) | | 20 |
| Frequency | [Hz] | 50 |
| Input options | | IEC |
| Requested input power | [kW] | 1.5 |
| Service factor | | 1.2 |
| Rated Power P1 | [kW] | 1.76 |

Output data

Gear unit F RS 70 PC 20 90 B14 AC 28 B3

| | | |
|---------------------|---------------------|--------------------------|
| Type | | RS - Worm speed reducers |
| Input type | | F (Elastic coupling) |
| Size | | 70 |
| Ratio (i=) | | 20 |
| Input flange | | B14 |
| Mounting position | | B3 |
| Input speed | [rpm] | 1400 |
| Output speed | [rpm] | 70 |
| Rated output torque | [Nm] | 165.76 |
| Service Factor | | 1.2 |
| Efficiency | | 0.81 |
| Inertia moment | [kgm ²] | 0.000251 |

Gear unit configuration

| | | |
|--------------|--|---------------------|
| Output shaft | | Hollow output shaft |
| Fixing | | Shaft mounting |
| Version | | PC |

Output radial and axial loads

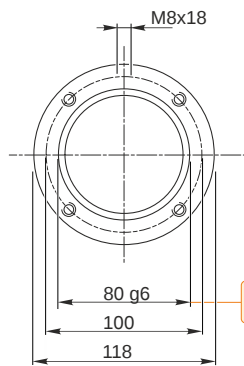
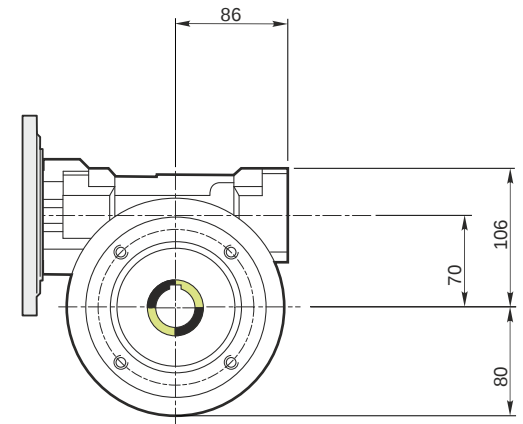
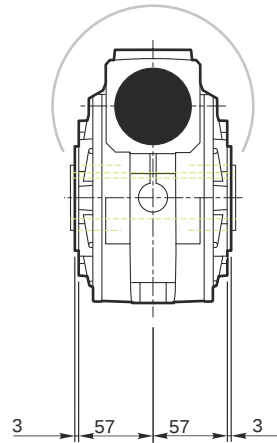
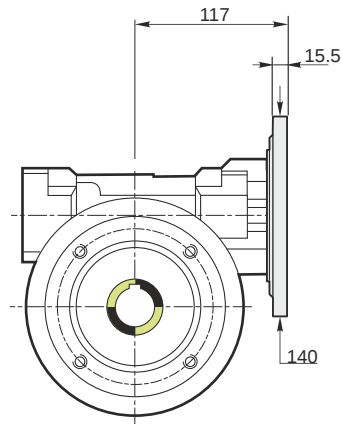
| | | |
|-----------------------------------|-----|------|
| Ball bearings output radial load | [N] | 3900 |
| Taper bearings output radial load | [N] | 5160 |
| Ball bearings output axial load | [N] | 780 |
| Taper bearings output axial load | [N] | 1032 |

Accessories

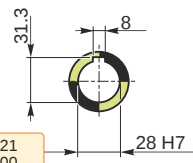
| | | |
|---------------------|--|-------|
| Hollow output shaft | | AC 28 |
|---------------------|--|-------|

Electric motor coupling

| | | |
|----------|------|-------|
| Size | | 90 L4 |
| Poles n. | | 4 |
| Power | [kW] | 1.5 |

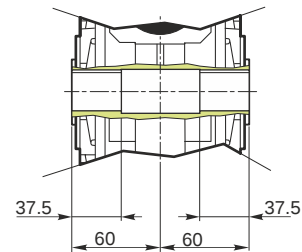


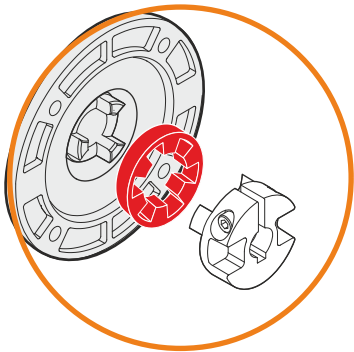
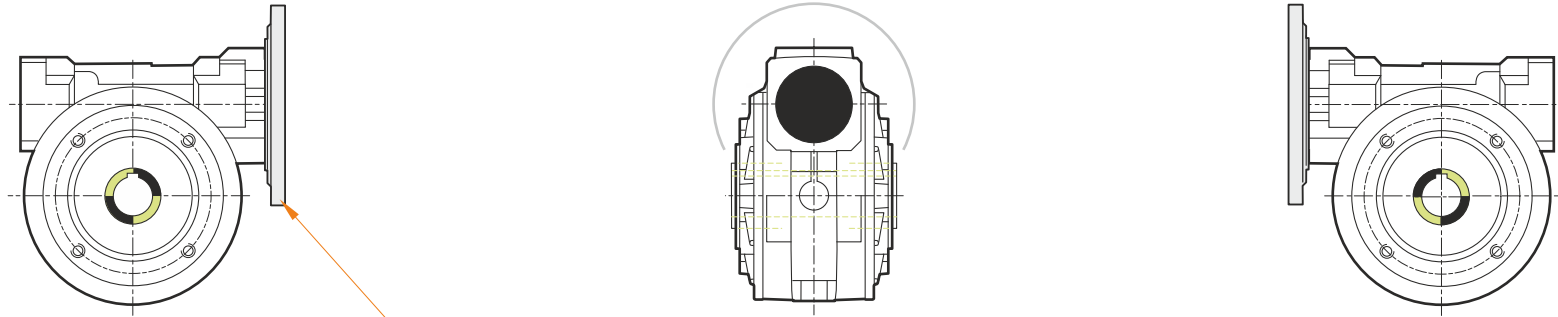
Hollow output shaft



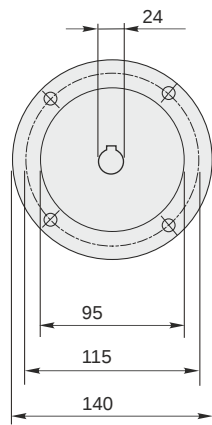
79.99
79.971

28.021
28.000



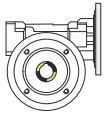


This gear unit is provided with an elastic coupling motor fitting

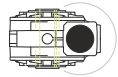


Mounting positions

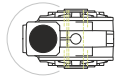
B3



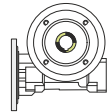
B6



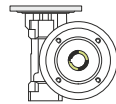
B7



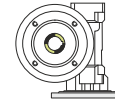
B8



V5



V6



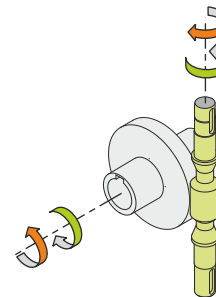
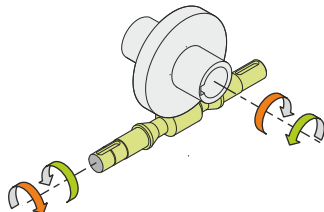
0.35



← Oil quantity [litres]

Lubricant type: Long life synthetic oil ISO VG320

Direction of rotation



Weight

Gear unit [kg] 9

Gearing data

| | |
|------------------|---------|
| Axial module | 2.8 |
| Number of starts | 2 |
| Lead angle | 11° 18' |
| Pressure angle | 20° |

Backdriving

Variable static self-locking
Quick back-driving in case of vibrations
Dynamic back-driving