

### Input data

System of measurement		Metric
Input type		Coupling for electric motor
Input speed	[rpm]	1400
Output speed	[rpm]	35
Ratio (i=)		40
Frequency	[Hz]	50
Input options		IEC
Requested input power	[kW]	1.1
Service factor		1.1
Rated Power P1	[kW]	1.23

### Output data

#### **Gear unit** F RS 70 PC 40 90 B14 AC 28 B3

Type		RS - Worm speed reducers
Input type		F (Elastic coupling)
Size		70
Ratio (i=)		40
Input flange		B14
Mounting position		B3
Input speed	[rpm]	1400
Output speed	[rpm]	35
Rated output torque	[Nm]	213.1
Service Factor		1.1
Efficiency		0.71
Inertia moment	[kgm <sup>2</sup> ]	0.000245

#### **Gear unit configuration**

Output shaft		Hollow output shaft
Fixing		Shaft mounting
Version		PC

#### **Output radial and axial loads**

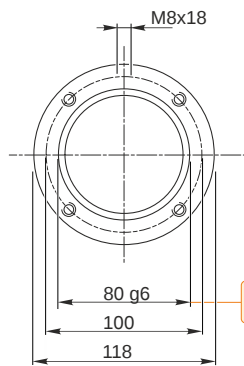
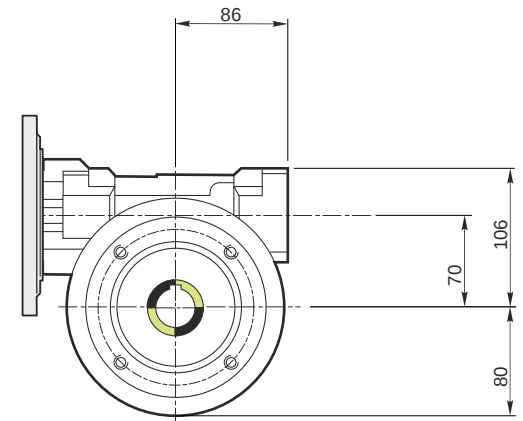
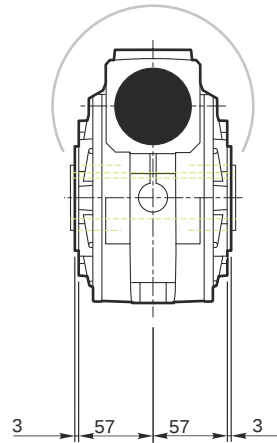
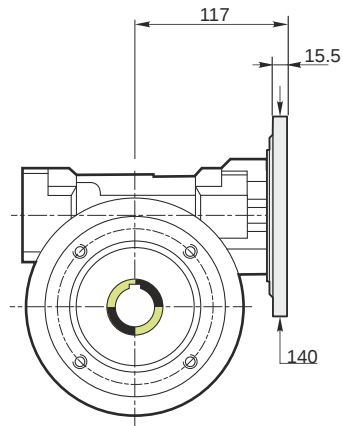
Ball bearings output radial load	[N]	4500
Taper bearings output radial load	[N]	6100
Ball bearings output axial load	[N]	900
Taper bearings output axial load	[N]	1220

#### **Accessories**

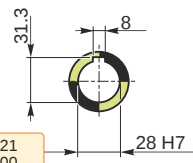
Hollow output shaft		AC 28
---------------------	--	-------

#### **Electric motor coupling**

Size		90 S4
Poles n.		4
Power	[kW]	1.1

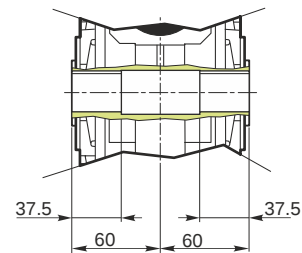


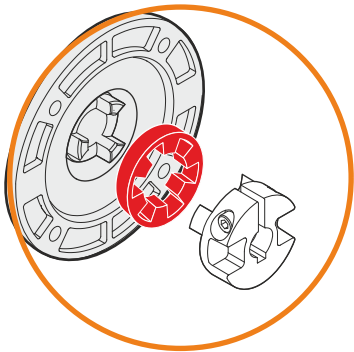
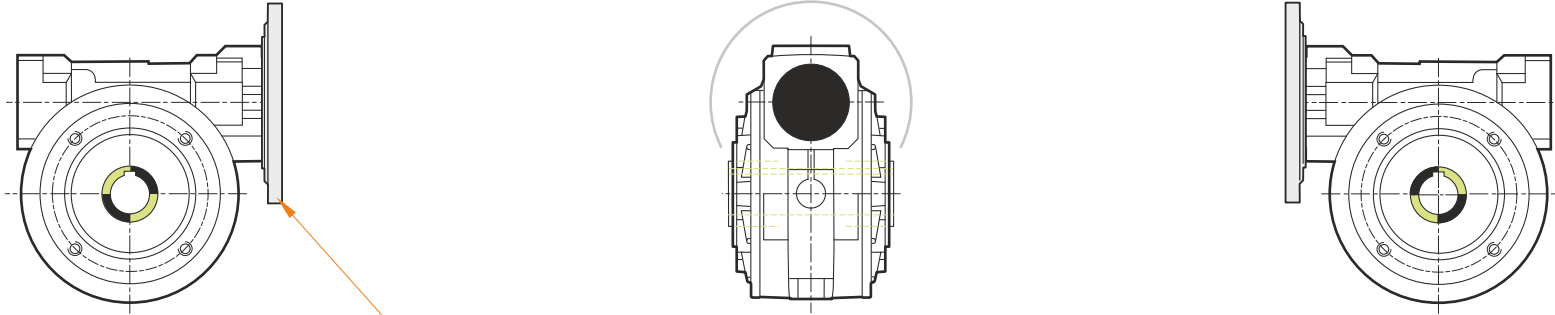
Hollow output shaft



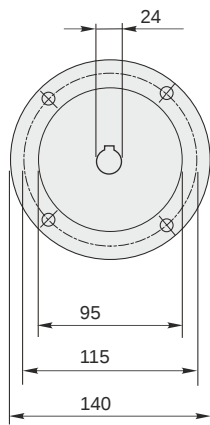
79.99  
79.971

28.021  
28.000



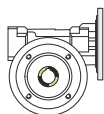


This gear unit is provided with an elastic coupling motor fitting

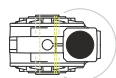


### Mounting positions

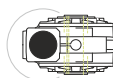
**B3**



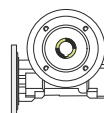
**B6**



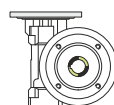
**B7**



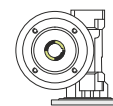
**B8**



**V5**



**V6**



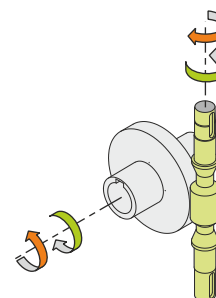
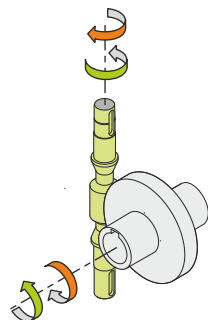
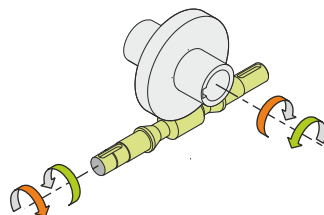
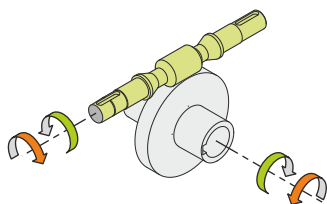
0.35



← Oil quantity [litres]

Lubricant type: Long life synthetic oil ISO VG320

### Direction of rotation



### Weight

Gear unit [kg] 9

### Gearing data

Axial module	2.8
Number of starts	1
Lead angle	5° 42'
Pressure angle	20°

### Backdriving

Static self-locking  
Slow back-driving in case of vibrations  
Low dynamic back-driving