

### Input data

System of measurement		Metric
Input type		Coupling for electric motor
Input speed	[rpm]	1400
Output speed	[rpm]	200
Ratio (i=)		7
Frequency	[Hz]	50
Input options		IEC
Requested input power	[kW]	4
Service factor		1.5
Rated Power P1	[kW]	6.16

### Output data

#### **Gear unit** F RS 85 PC 7 112 B14 AC 32 B3

Type		RS - Worm speed reducers
Input type		F (Elastic coupling)
Size		85
Ratio (i=)		7
Input flange		B14
Mounting position		B3
Input speed	[rpm]	1400
Output speed	[rpm]	200
Rated output torque	[Nm]	168.08
Service Factor		1.5
Efficiency		0.88
Inertia moment	[kgm <sup>2</sup> ]	0.000489

#### **Gear unit configuration**

Output shaft		Hollow output shaft
Fixing		Shaft mounting
Version		PC

#### **Output radial and axial loads**

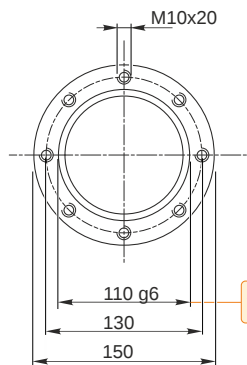
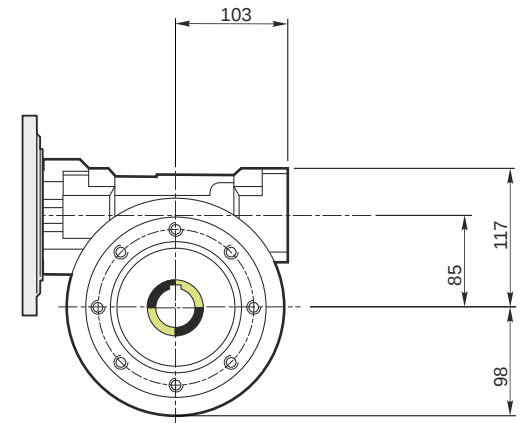
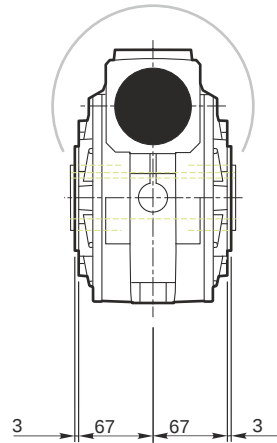
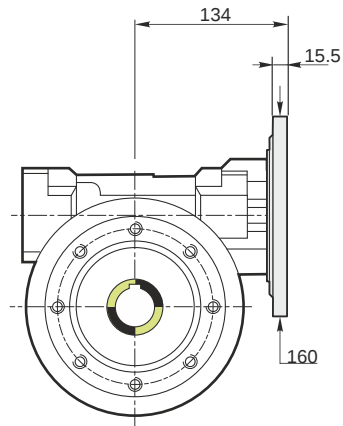
Ball bearings output radial load	[N]	3300
Taper bearings output radial load	[N]	4200
Ball bearings output axial load	[N]	660
Taper bearings output axial load	[N]	840

#### **Accessories**

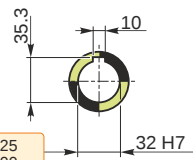
Hollow output shaft		AC 32
---------------------	--	-------

#### **Electric motor coupling**

Size		112 A4
Poles n.		4
Power	[kW]	4

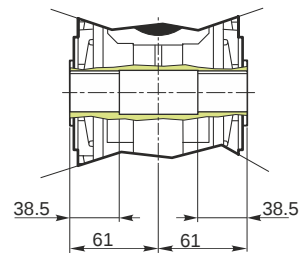


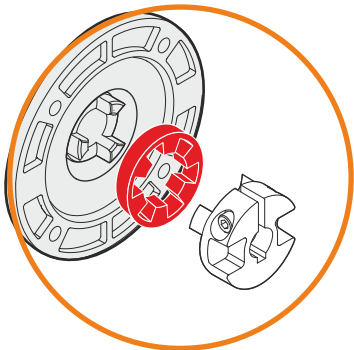
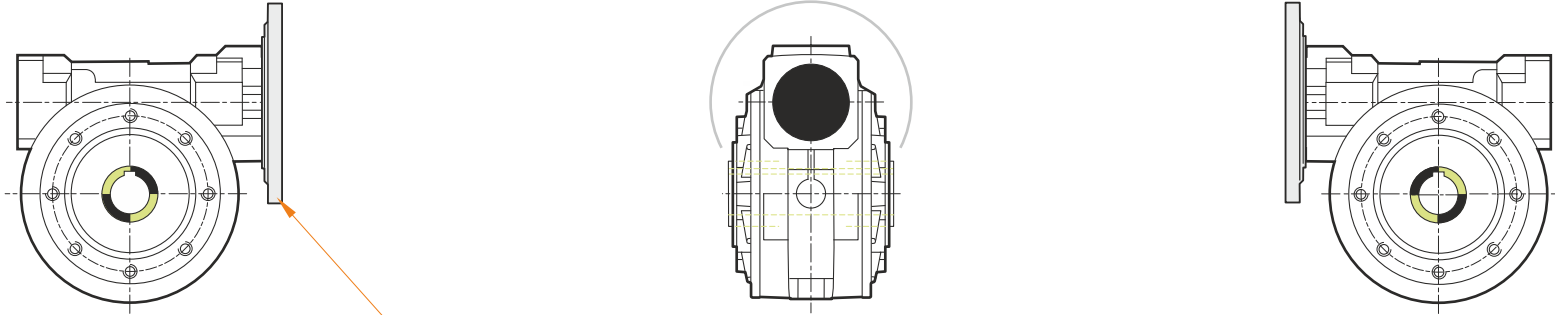
Hollow output shaft



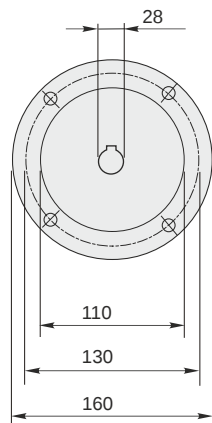
109.988  
109.966

32.025  
32.000



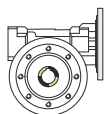


This gear unit is provided with an elastic coupling motor fitting

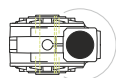


### Mounting positions

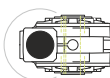
B3



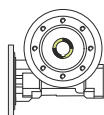
B6



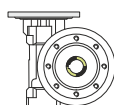
B7



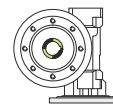
B8



V5



V6



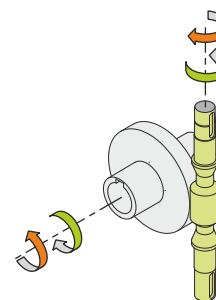
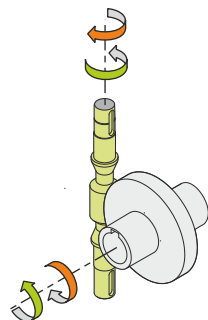
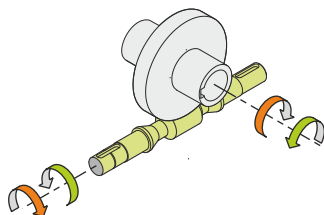
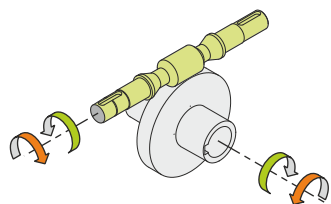
0.6



← Oil quantity [litres]

Lubricant type: Long life synthetic oil ISO VG320

### Direction of rotation



### Weight

Gear unit [kg] 13.5

### Gearing data

Axial module	4.7
Number of starts	4
Lead angle	26° 05'
Pressure angle	20°

### Backdriving

Static back-driving  
Quick back-driving  
Dynamic back-driving