

Input data

System of measurement		Metric
Input type		Coupling for electric motor
Input speed	[rpm]	1400
Output speed	[rpm]	200
Ratio (i=)		7
Frequency	[Hz]	50
Input options		IEC
Requested input power	[kW]	9.2
Service factor		1.4
Rated Power P1	[kW]	12.49

Output data

Gear unit **F RS 110 PC 7 132 B14 AC 42 B3**

Type		RS - Worm speed reducers
Input type		F
Size		110
Ratio (i=)		7
Input flange		B14
Mounting position		B3
Input speed	[rpm]	1400
Output speed	[rpm]	200
Rated output torque	[Nm]	386.58
Service Factor		1.4
Efficiency		0.88
Inertia moment	[kgm ²]	0.002216

Gear unit configuration

Output shaft		Hollow output shaft
Fixing		Shaft mounting
Version		PC

Output radial and axial loads

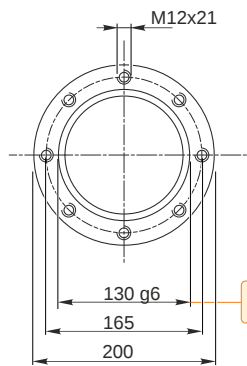
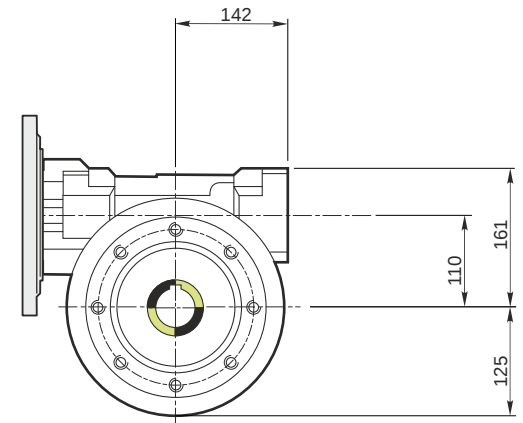
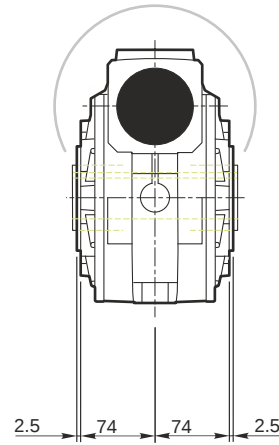
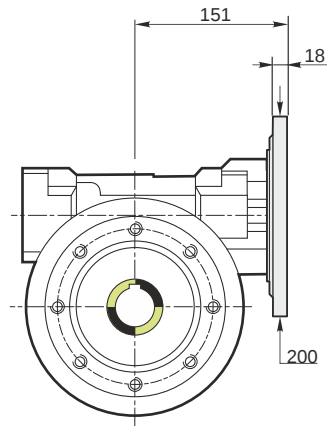
Ball bearings output radial load	[N]	3900
Taper bearings output radial load	[N]	5000
Ball bearings output axial load	[N]	780
Taper bearings output axial load	[N]	1000

Accessories

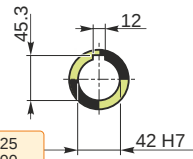
Hollow output shaft		AC 42
---------------------	--	-------

Electric motor coupling

Size		132 ML4
Poles n.		4
Power	[kW]	9.2

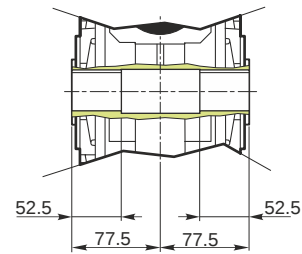


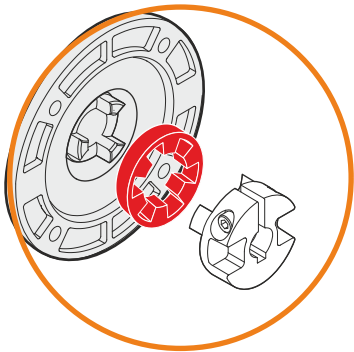
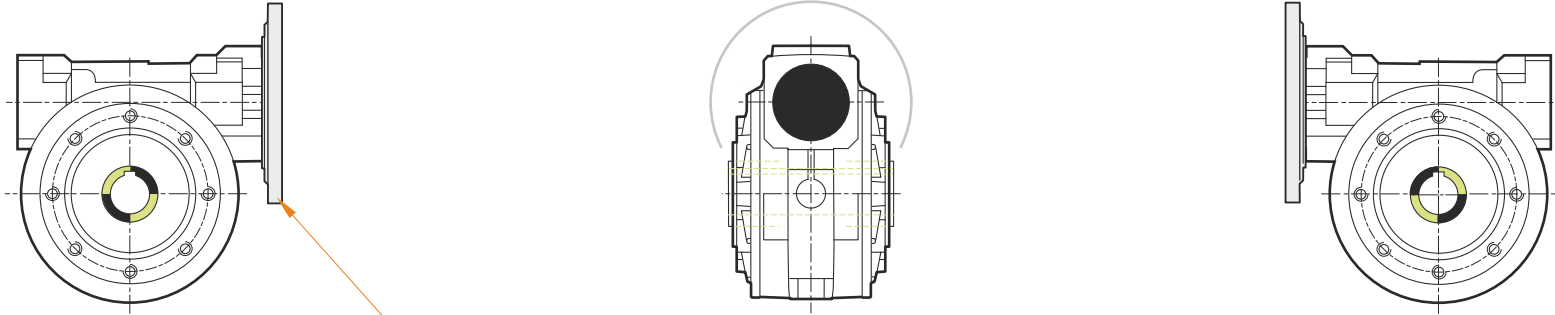
Hollow output shaft



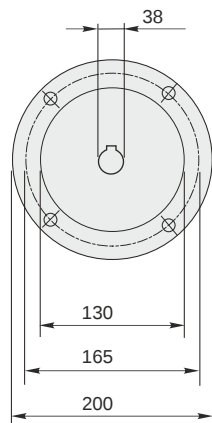
129.986
129.961

42.025
42.000



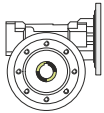


This gear unit is provided with an elastic coupling motor fitting



Mounting positions

B3



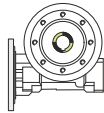
B6



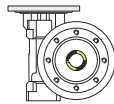
B7



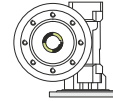
B8



V5



V6



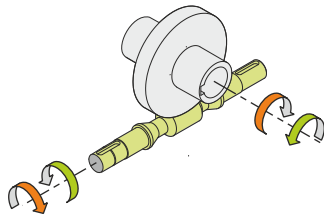
1.5



← Oil quantity [litres]

Lubricant type: Long life synthetic oil ISO VG320

Direction of rotation



Weight

Gear unit [kg] 39

Gearing data

Axial module 6.1
Number of starts 4
Lead angle 26° 22'
Pressure angle 20°

Backdriving

Static back-driving
Quick back-driving
Dynamic back-driving