

### Input data

System of measurement		Metric
Input type		Coupling for electric motor
Input speed	[rpm]	1400
Output speed	[rpm]	35
Ratio (i=)		40
Frequency	[Hz]	50
Input options		IEC
Requested input power	[kW]	3
Service factor		1.2
Rated Power P1	[kW]	3.47

### Output data

#### **Gear unit** F RS 110 PC 40 100 B14 AC 42 B3

Type		RS - Worm speed reducers
Input type		F
Size		110
Ratio (i=)		40
Input flange		B14
Mounting position		B3
Input speed	[rpm]	1400
Output speed	[rpm]	35
Rated output torque	[Nm]	597.56
Service Factor		1.2
Efficiency		0.73
Inertia moment	[kgm <sup>2</sup> ]	0.001696

#### **Gear unit configuration**

Output shaft		Hollow output shaft
Fixing		Shaft mounting
Version		PC

#### **Output radial and axial loads**

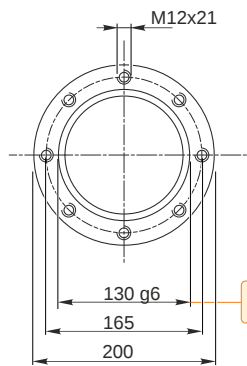
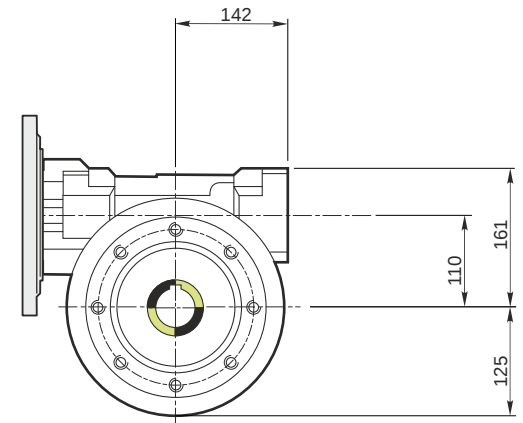
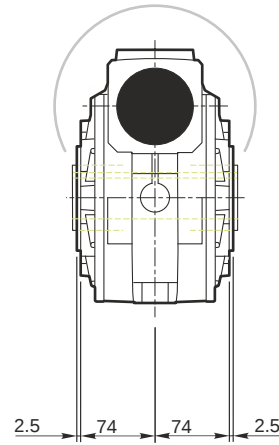
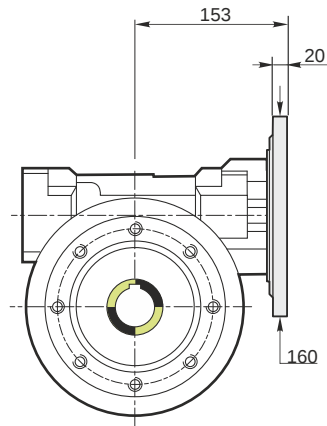
Ball bearings output radial load	[N]	6700
Taper bearings output radial load	[N]	9300
Ball bearings output axial load	[N]	1340
Taper bearings output axial load	[N]	1860

#### **Accessories**

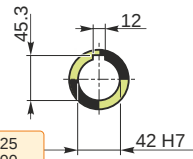
Hollow output shaft		AC 42
---------------------	--	-------

#### **Electric motor coupling**

Size		100 B4
Poles n.		4
Power	[kW]	3

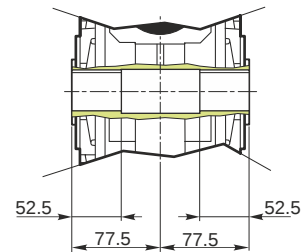


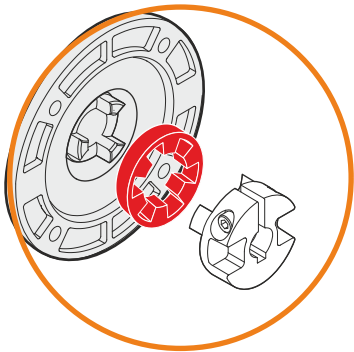
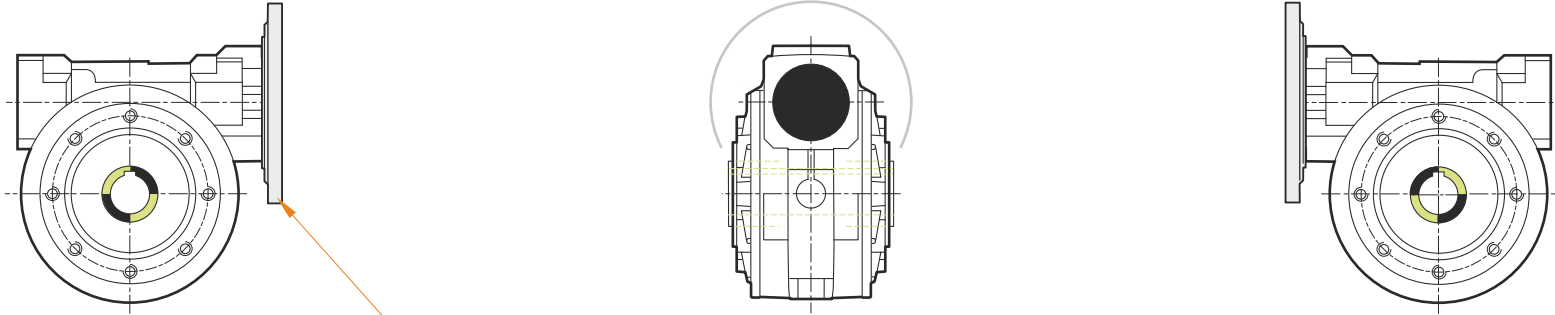
Hollow output shaft



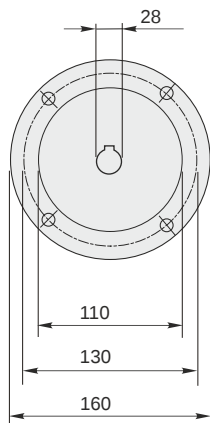
129.986  
129.961

42.025  
42.000



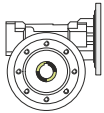


This gear unit is provided with an elastic coupling motor fitting



**Mounting positions**

**B3**



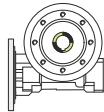
**B6**



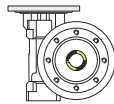
**B7**



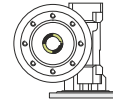
**B8**



**V5**



**V6**



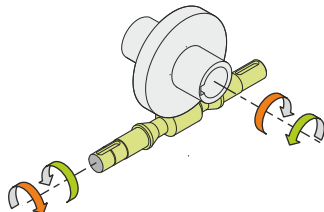
1.5



← Oil quantity [litres]

Lubricant type: Long life synthetic oil ISO VG320

**Direction of rotation**



**Weight**

Gear unit [kg] 39

**Gearing data**

Axial module	4.4
Number of starts	1
Lead angle	5° 42'
Pressure angle	20°

**Backdriving**

Static self-locking  
Slow back-driving in case of vibrations  
Low dynamic back-driving