

Input data

| | | |
|-----------------------|-------|-----------------------------|
| System of measurement | | Metric |
| Input type | | Coupling for electric motor |
| Input speed | [rpm] | 1400 |
| Output speed | [rpm] | 14 |
| Ratio (i=) | | 100 |
| Frequency | [Hz] | 50 |
| Input options | | IEC |
| Requested input power | [kW] | 1.1 |
| Service factor | | 1 |
| Rated Power P1 | [kW] | 1.13 |

Output data

Gear unit **F RS 110 PC 100 90 B14 AC 42 B3**

| | | |
|---------------------|---------------------|--------------------------|
| Type | | RS - Worm speed reducers |
| Input type | | F |
| Size | | 110 |
| Ratio (i=) | | 100 |
| Input flange | | B14 |
| Mounting position | | B3 |
| Input speed | [rpm] | 1400 |
| Output speed | [rpm] | 14 |
| Rated output torque | [Nm] | 457.72 |
| Service Factor | | 1 |
| Efficiency | | 0.61 |
| Inertia moment | [kgm ²] | 0.001682 |

Gear unit configuration

| | | |
|--------------|--|---------------------|
| Output shaft | | Hollow output shaft |
| Fixing | | Shaft mounting |
| Version | | PC |

Output radial and axial loads

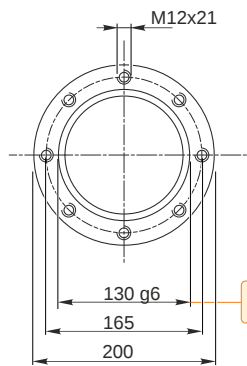
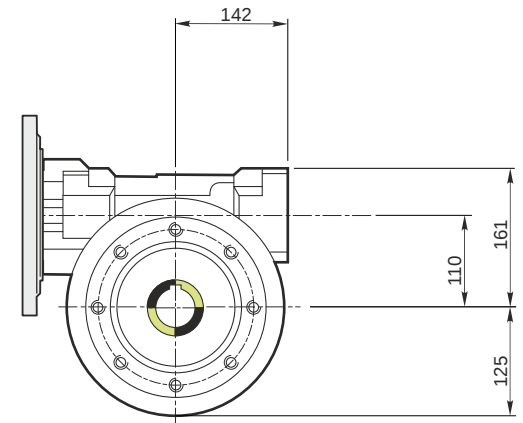
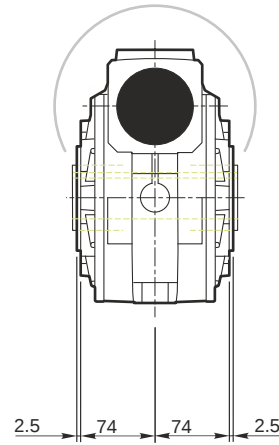
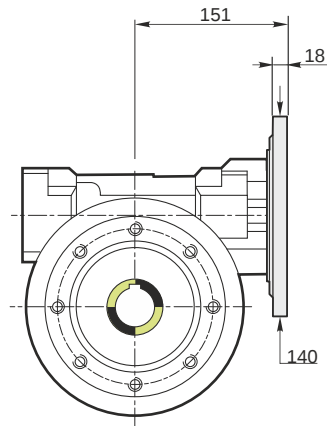
| | | |
|-----------------------------------|-----|-------|
| Ball bearings output radial load | [N] | 9800 |
| Taper bearings output radial load | [N] | 11100 |
| Ball bearings output axial load | [N] | 1960 |
| Taper bearings output axial load | [N] | 2220 |

Accessories

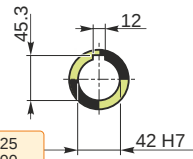
| | | |
|---------------------|--|-------|
| Hollow output shaft | | AC 42 |
|---------------------|--|-------|

Electric motor coupling

| | | |
|----------|------|-------|
| Size | | 90 S4 |
| Poles n. | | 4 |
| Power | [kW] | 1.1 |

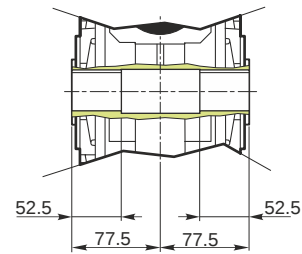


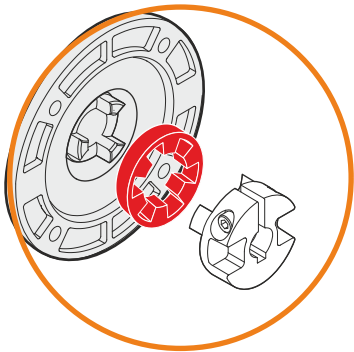
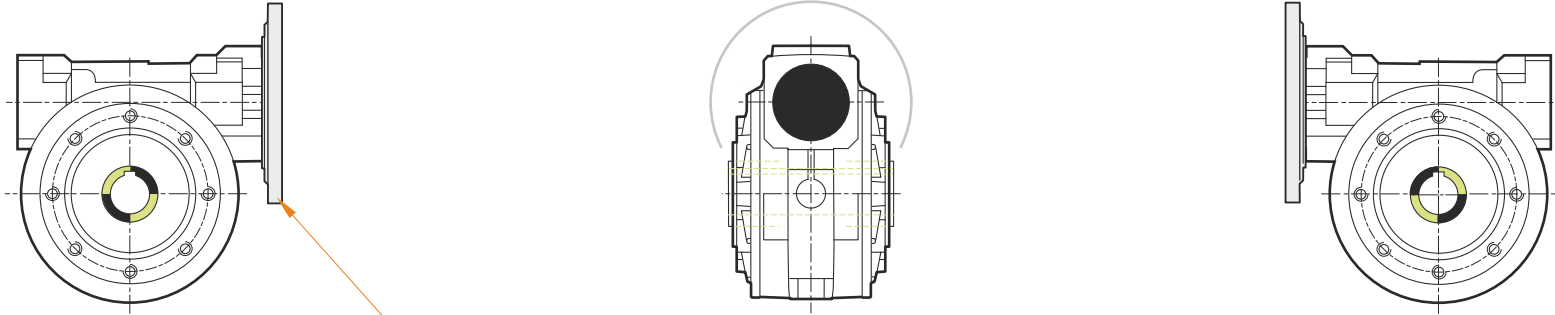
Hollow output shaft



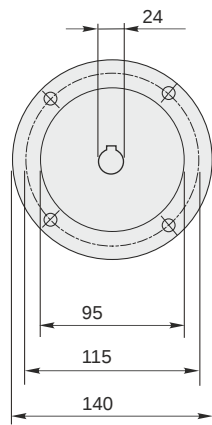
129.986
129.961

42.025
42.000



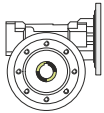


This gear unit is provided with an elastic coupling motor fitting



Mounting positions

B3



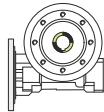
B6



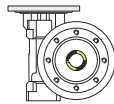
B7



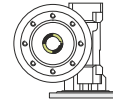
B8



V5



V6



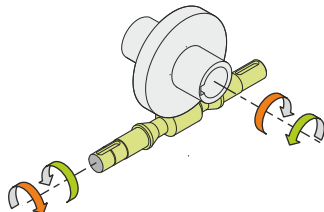
1.5



← Oil quantity [litres]

Lubricant type: Long life synthetic oil ISO VG320

Direction of rotation



Weight

Gear unit [kg] 39

Gearing data

Axial module 1.8
Number of starts 1
Lead angle 2° 34'
Pressure angle 20°

Backdriving

Static self-locking
No back-driving
Low dynamic back-driving