

Input data

System of measurement		Metric
Input type		Coupling for electric motor
Input speed	[rpm]	1400
Output speed	[rpm]	70
Ratio (i=)		20
Frequency	[Hz]	50
Input options		IEC
Requested input power	[kW]	11
Service factor		1.1
Rated Power P1	[kW]	12.48

Output data

Gear unit F RS 150 PC 20 160 B5 AC 55 B3

Type		RS - Worm speed reducers
Input type		F (Elastic coupling)
Size		150
Ratio (i=)		20
Input flange		
Mounting position		B3
Input speed	[rpm]	1400
Output speed	[rpm]	70
Rated output torque	[Nm]	1260.6
Service Factor		1.1
Efficiency		0.84
Inertia moment	[kgm ²]	0.006086

Gear unit configuration

Output shaft		Hollow output shaft
Fixing		Shaft mounting
Version		PC

Output radial and axial loads

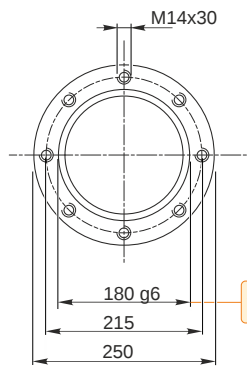
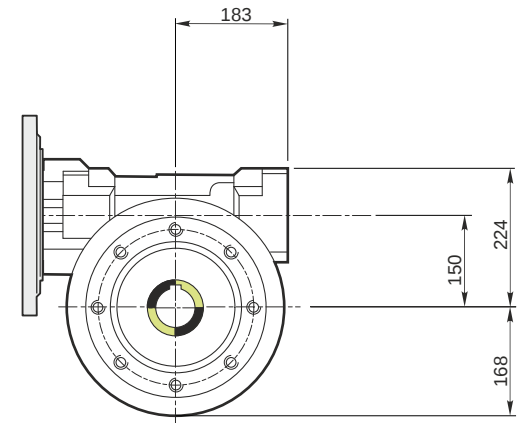
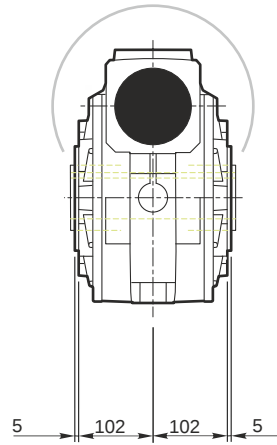
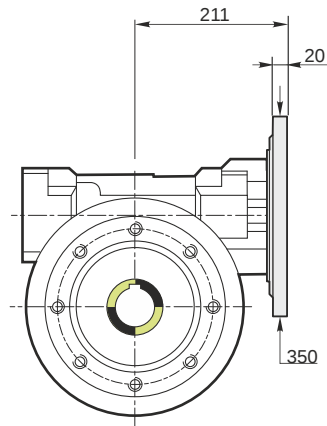
Ball bearings output radial load	[N]	8800
Taper bearings output radial load	[N]	13200
Ball bearings output axial load	[N]	1760
Taper bearings output axial load	[N]	2640

Accessories

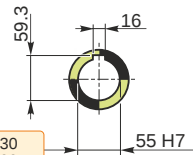
Hollow output shaft		AC 55
---------------------	--	-------

Electric motor coupling

Size		160 M4
Poles n.		4
Power	[kW]	11

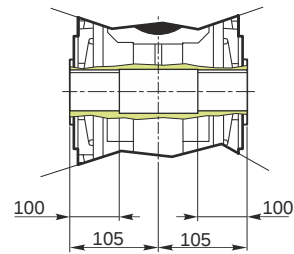


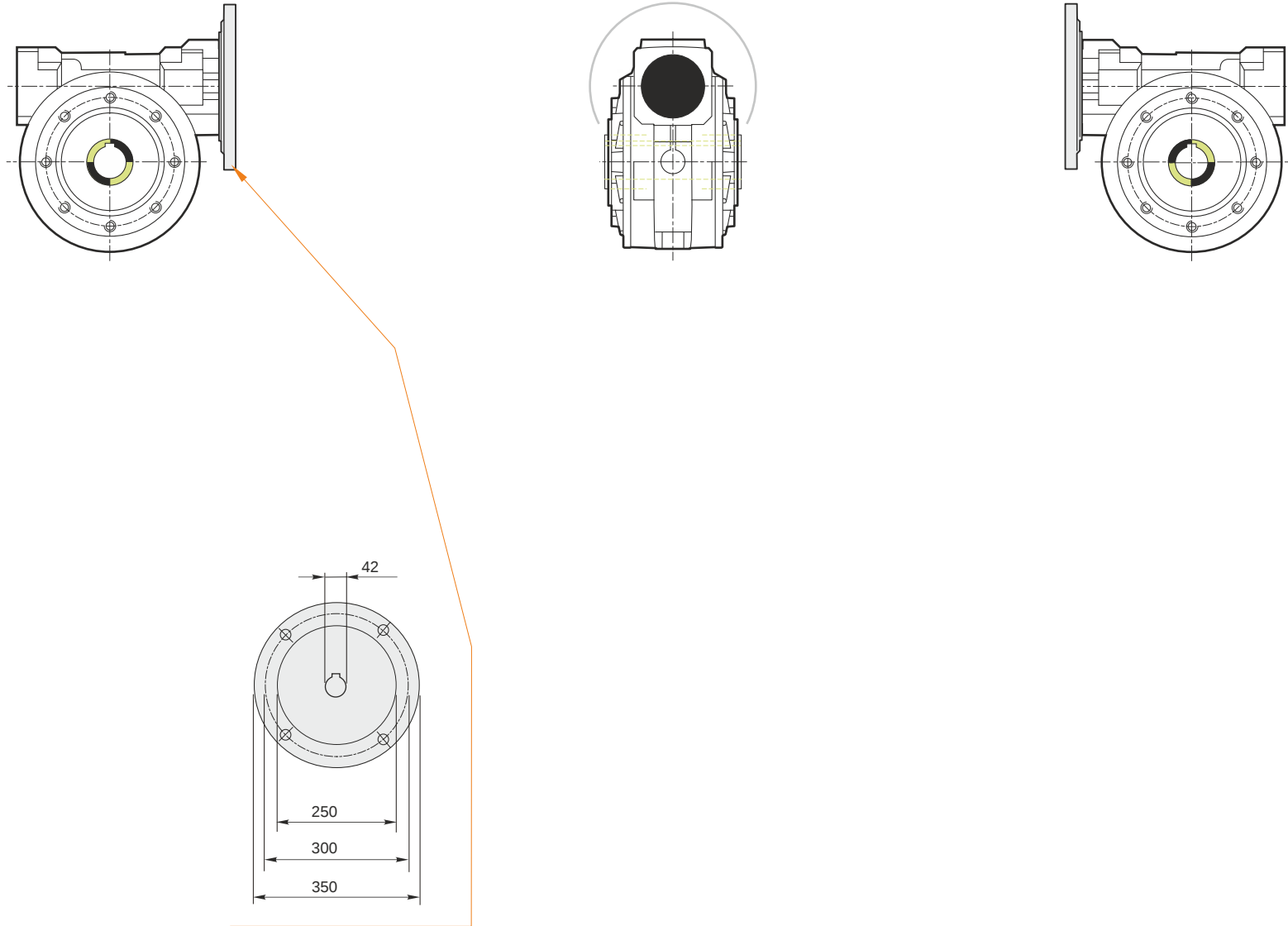
Hollow output shaft



179.986
179.961

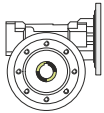
55.030
55.000





Mounting positions

B3



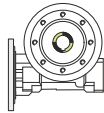
B6



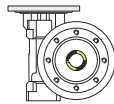
B7



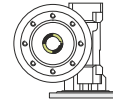
B8



V5



V6



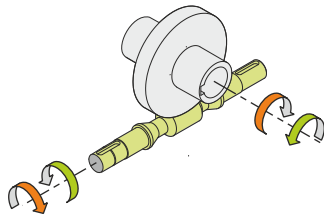
4.4



← Oil quantity [litres]

Lubricant type: Long life synthetic oil ISO VG320

Direction of rotation



Weight

Gear unit [kg] 80

Gearing data

Axial module	6.20
Number of starts	2
Lead angle	13° 24'
Pressure angle	20°

Backdriving

Static back-driving
Quick back-driving
Dynamic back-driving