

Input data

| | | |
|-----------------------|-------|-----------------------------|
| System of measurement | | Metric |
| Input type | | Coupling for electric motor |
| Input speed | [rpm] | 1400 |
| Output speed | [rpm] | 28.57 |
| Ratio (i=) | | 49 |
| Frequency | [Hz] | 50 |
| Input options | | IEC |
| Requested input power | [kW] | 5.5 |
| Service factor | | 1.1 |
| Rated Power P1 | [kW] | 5.9 |

Output data

Gear unit F RS 150 PC 49 132 B14 AC 55 B3

| | | |
|---------------------|---------------------|--------------------------|
| Type | | RS - Worm speed reducers |
| Input type | | F (Elastic coupling) |
| Size | | 150 |
| Ratio (i=) | | 49 |
| Input flange | | B14 |
| Mounting position | | B3 |
| Input speed | [rpm] | 1400 |
| Output speed | [rpm] | 28.57 |
| Rated output torque | [Nm] | 1342.01 |
| Service Factor | | 1.1 |
| Efficiency | | 0.73 |
| Inertia moment | [kgm ²] | 0.005843 |

Gear unit configuration

| | | |
|--------------|--|---------------------|
| Output shaft | | Hollow output shaft |
| Fixing | | Shaft mounting |
| Version | | PC |

Output radial and axial loads

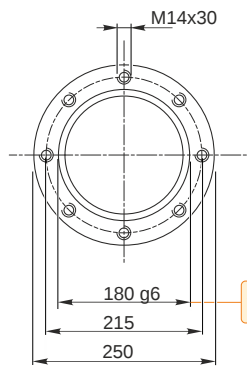
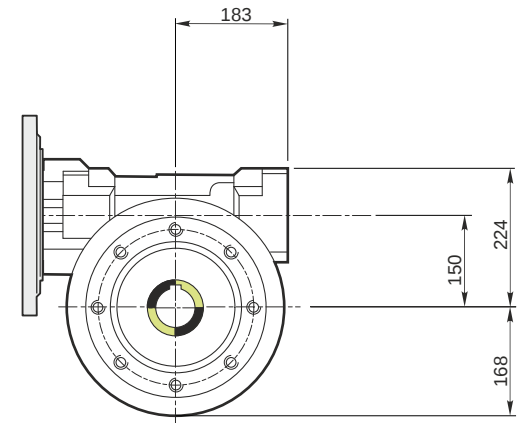
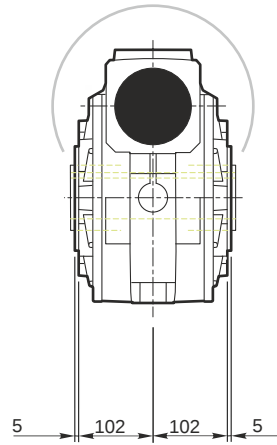
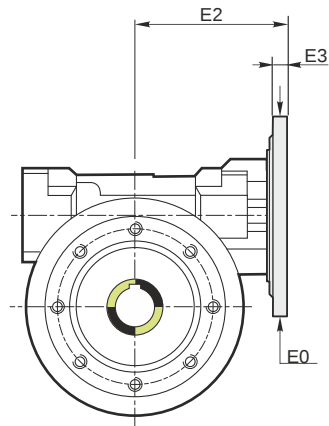
| | | |
|-----------------------------------|-----|-------|
| Ball bearings output radial load | [N] | 12000 |
| Taper bearings output radial load | [N] | 18000 |
| Ball bearings output axial load | [N] | 2400 |
| Taper bearings output axial load | [N] | 3600 |

Accessories

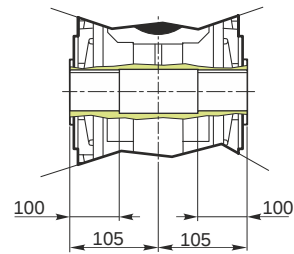
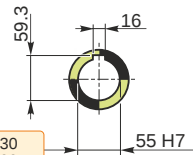
| | | |
|---------------------|--|-------|
| Hollow output shaft | | AC 55 |
|---------------------|--|-------|

Electric motor coupling

| | | |
|----------|------|--------|
| Size | | 132 S4 |
| Poles n. | | 4 |
| Power | [kW] | 5.5 |

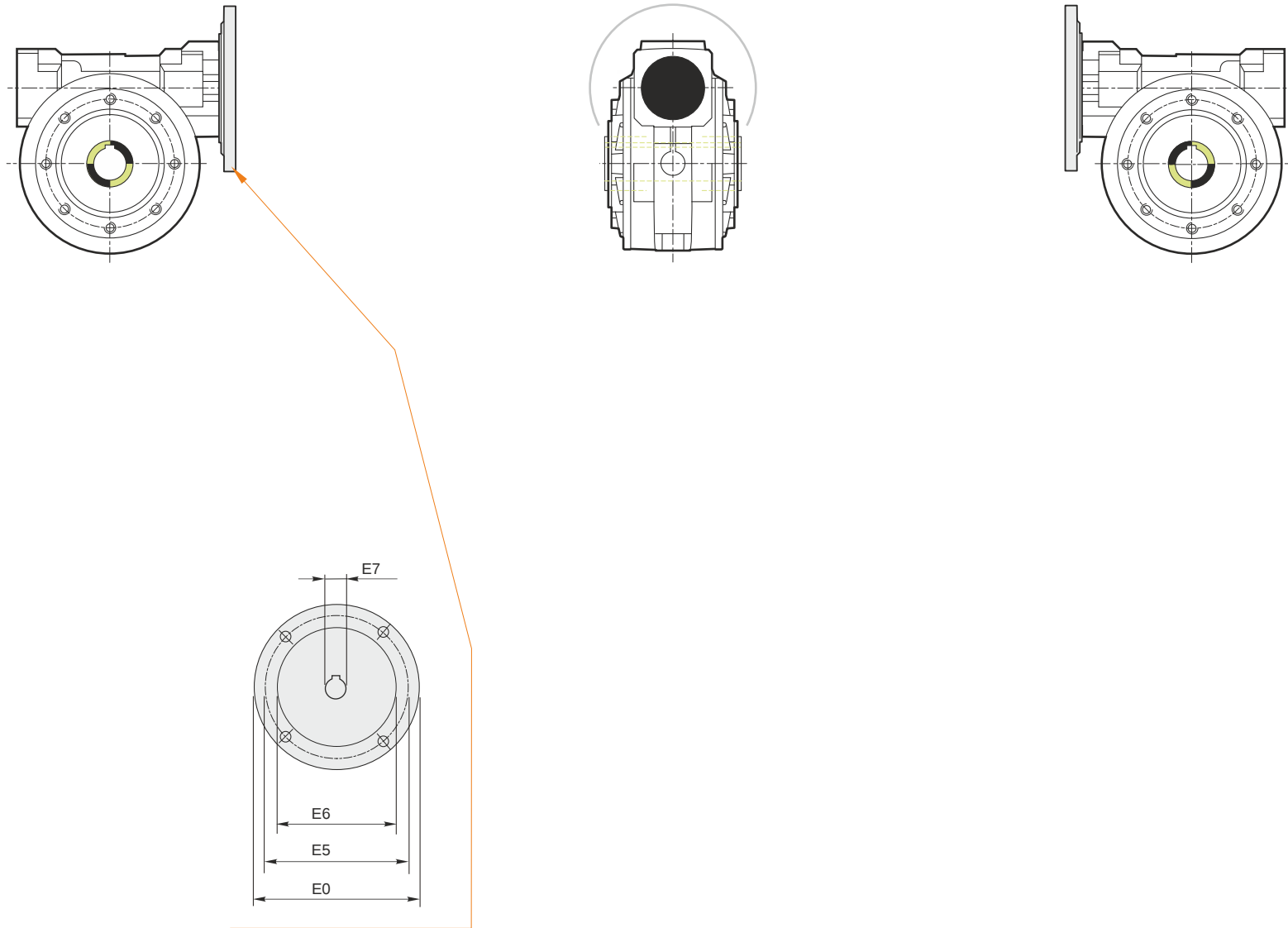


Hollow output shaft



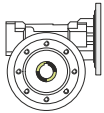
179.986
179.961

55.030
55.000



Mounting positions

B3



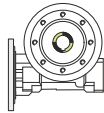
B6



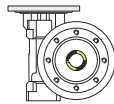
B7



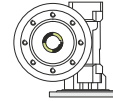
B8



V5



V6



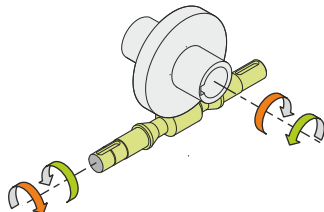
4.4



← Oil quantity [litres]

Lubricant type: Long life synthetic oil ISO VG320

Direction of rotation



Weight

Gear unit [kg] 80

Gearing data

| | |
|------------------|--------|
| Axial module | 5.10 |
| Number of starts | 1 |
| Lead angle | 5° 48' |
| Pressure angle | 20° |

Backdriving

Static self-locking
Slow back-driving in case of vibrations
Low dynamic back-driving