

### Input data

System of measurement		Metric
Input type		Coupling for electric motor
Input speed	[rpm]	1400
Output speed	[rpm]	14
Ratio (i=)		100
Frequency	[Hz]	50
Input options		IEC
Requested input power	[kW]	2.2
Service factor		1.2
Rated Power P1	[kW]	2.61

### Output data

#### **Gear unit** F RS 150 PC 100 100 B14 AC 55 B3

Type		RS - Worm speed reducers
Input type		F (Elastic coupling)
Size		150
Ratio (i=)		100
Input flange		B14
Mounting position		B3
Input speed	[rpm]	1400
Output speed	[rpm]	14
Rated output torque	[Nm]	945.45
Service Factor		1.2
Efficiency		0.63
Inertia moment	[kgm <sup>2</sup> ]	0.005807

#### **Gear unit configuration**

Output shaft		Hollow output shaft
Fixing		Shaft mounting
Version		PC

#### **Output radial and axial loads**

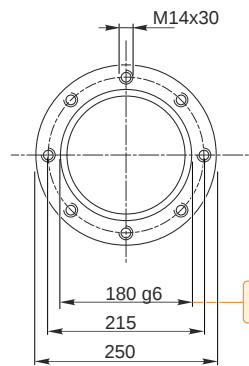
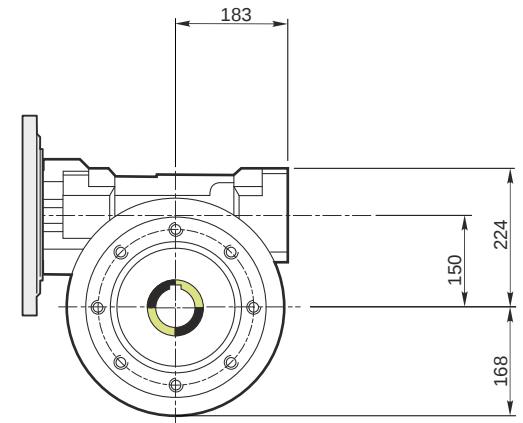
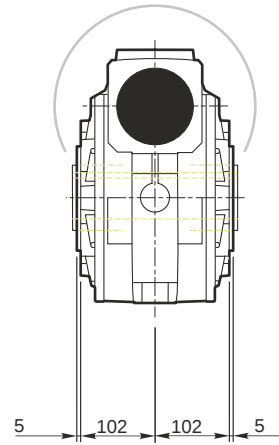
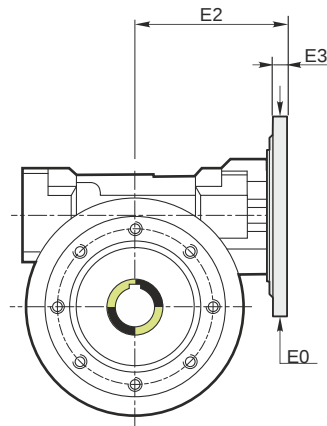
Ball bearings output radial load	[N]	15000
Taper bearings output radial load	[N]	19500
Ball bearings output axial load	[N]	3000
Taper bearings output axial load	[N]	3900

#### **Accessories**

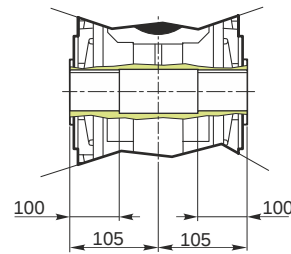
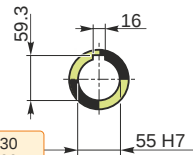
Hollow output shaft		AC 55
---------------------	--	-------

#### **Electric motor coupling**

Size		100 A4
Poles n.		4
Power	[kW]	2.2

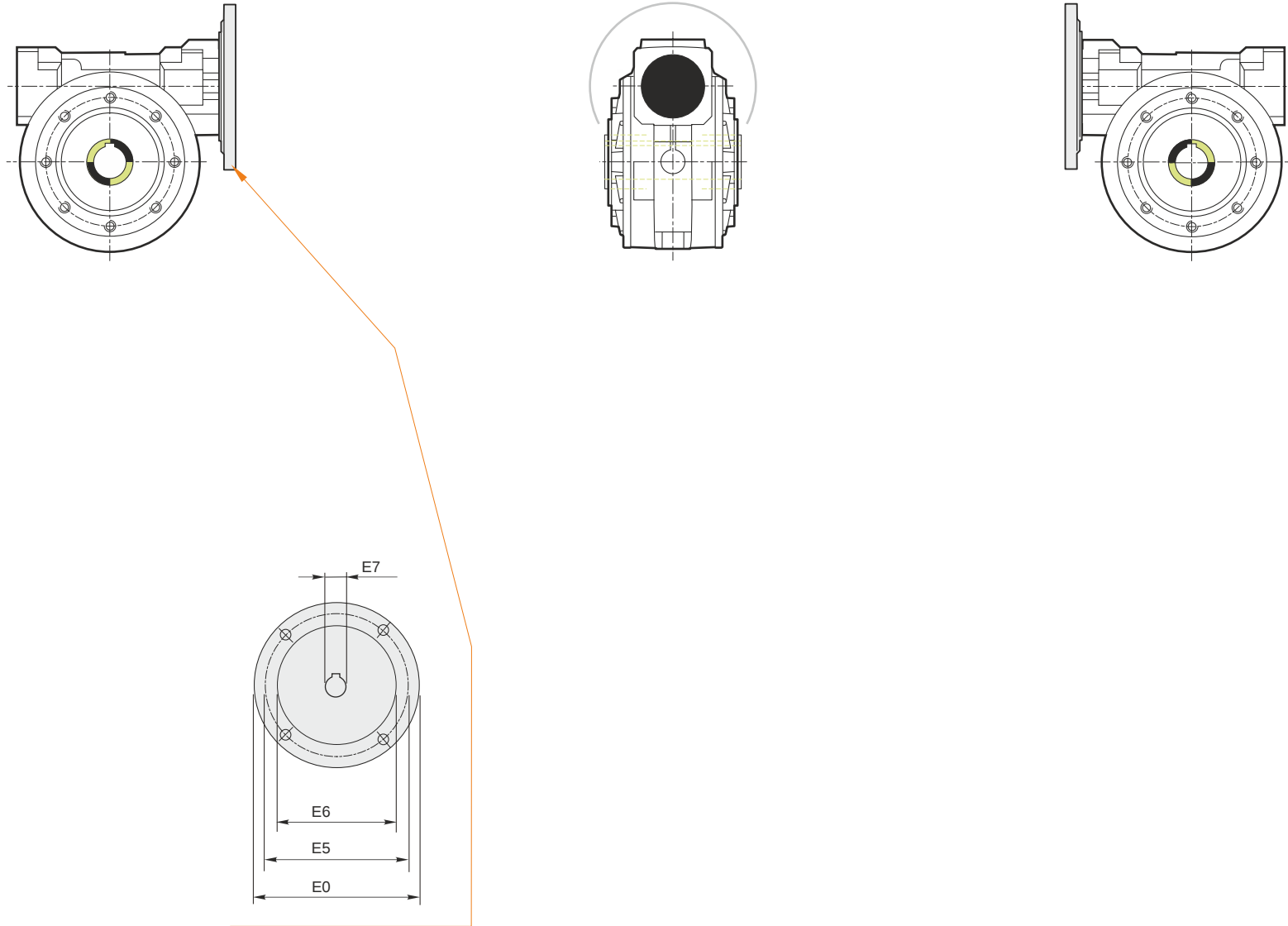


*Hollow output shaft*



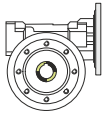
179.986  
179.961

55.030  
55.000

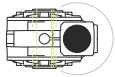


**Mounting positions**

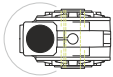
**B3**



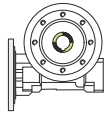
**B6**



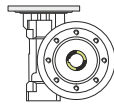
**B7**



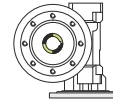
**B8**



**V5**



**V6**



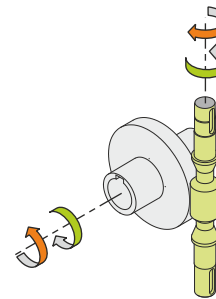
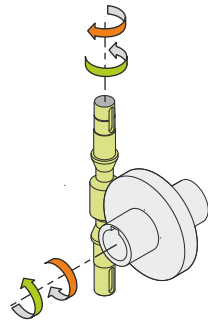
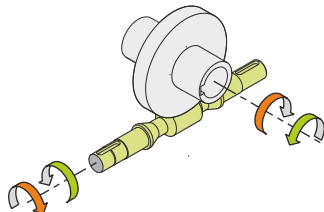
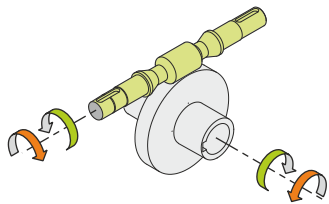
4.4



← Oil quantity [litres]

Lubricant type: Long life synthetic oil ISO VG320

**Direction of rotation**



**Weight**

Gear unit [kg] 80

**Gearing data**

Axial module	2.60
Number of starts	1
Lead angle	3° 43'
Pressure angle	20°

**Backdriving**

Static self-locking  
Slow back-driving in case of vibrations  
Low dynamic back-driving