

Input data

System of measurement		Metric
Input type		Gear motor
Input speed	[rpm]	1400
Output speed	[rpm]	70
Ratio (i=)		20
Frequency	[Hz]	50
Input options		IEC
Requested input power	[kW]	1.1
Service factor		1.1
Rated Power P1	[kW]	1.16

Output data

Gear unit **M RS 60 PC 20 90 B14 AC 25 MT 1.1 kW 90 S4 B14 X3 B3**

Type		RS - Worm speed reducers
Input type		M
Size		60
Ratio (i=)		20
Input flange		B14
Mounting position		B3
Input speed	[rpm]	1400
Output speed	[rpm]	70
Rated output torque	[Nm]	115.56
Service Factor		1.1
Efficiency		0.77
Inertia moment	[kgm ²]	0.000107

Gear unit configuration

Output shaft		Hollow output shaft
Fixing		Shaft mounting
Version		PC

Output radial and axial loads

Ball bearings output radial load	[N]	3300
Taper bearings output radial load	[N]	4200
Ball bearings output axial load	[N]	660
Taper bearings output axial load	[N]	840

Accessories

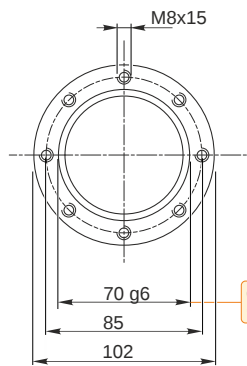
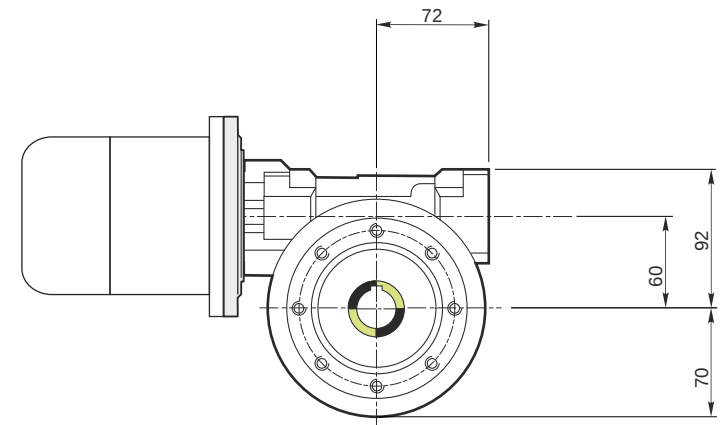
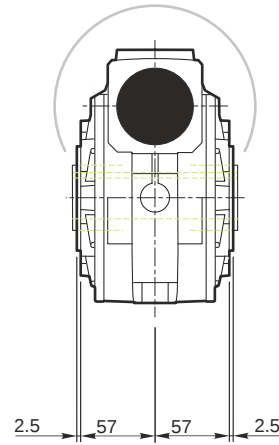
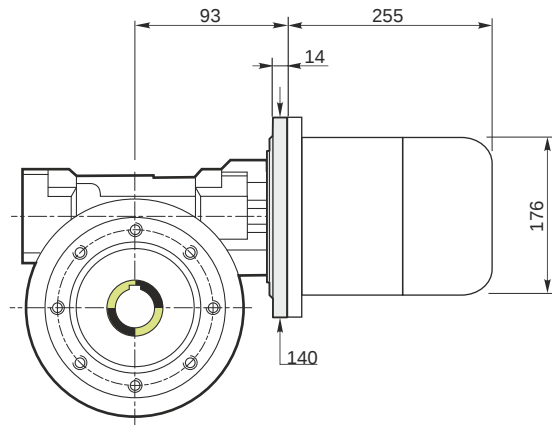
Hollow output shaft		AC 25
---------------------	--	-------

Electric motor

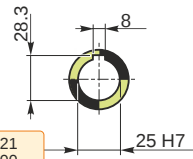
Size		90 S4
Poles		4
Power	[kW]	1.1

Electric motor configuration

Motor flange		B14
Terminal box position		X3

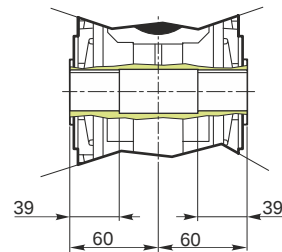


Hollow output shaft



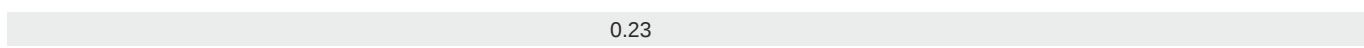
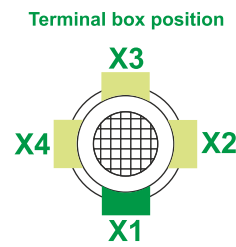
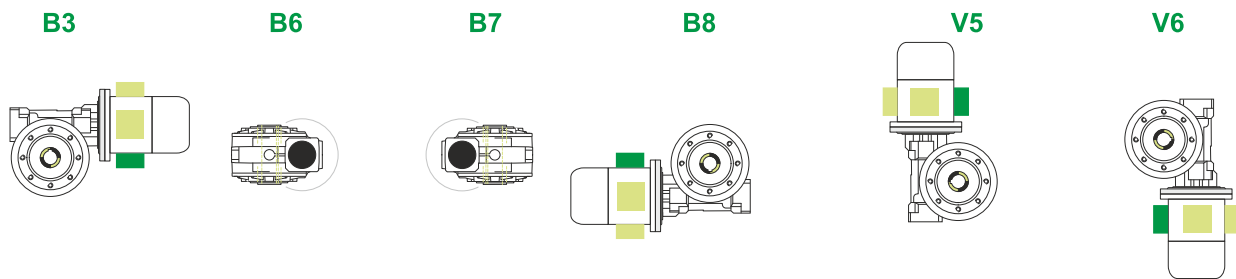
69.99
69.971

25.021
25.000



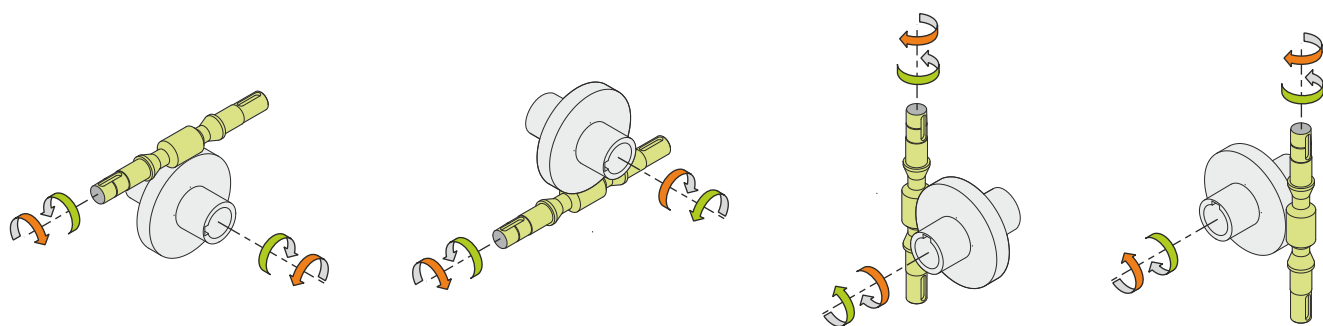
M RS 60 PC 20 90 B14 AC 25 MT 1.1 kW 90 S4 B14 X3 B3

Mounting positions



Lubricant type: Long life synthetic oil ISO VG320

Direction of rotation



Weight

Gear unit [kg]	6.5
Electric motor [kg]	12

Gearing data

Axial module	2.4
Number of starts	2
Lead angle	11° 18'
Pressure angle	20°

Backdriving

Variable static self-locking
Quick back-driving in case of vibrations
Dynamic back-driving