

Input data

| | | |
|-----------------------|-------|------------|
| System of measurement | | Metric |
| Input type | | Gear motor |
| Input speed | [rpm] | 1400 |
| Output speed | [rpm] | 14 |
| Ratio (i=) | | 100 |
| Frequency | [Hz] | 50 |
| Input options | | IEC |
| Requested input power | [kW] | 0.37 |
| Service factor | | 1 |
| Rated Power P1 | [kW] | 0.37 |

Output data

Gear unit **M RS 70 PC 100 71 B14 AC 28 MT 0.37 kW 71 B4 B14 X3 B3**

| | | |
|---------------------|---------------------|--------------------------|
| Type | | RS - Worm speed reducers |
| Input type | | M |
| Size | | 70 |
| Ratio (i=) | | 100 |
| Input flange | | B14 |
| Mounting position | | B3 |
| Input speed | [rpm] | 1400 |
| Output speed | [rpm] | 14 |
| Rated output torque | [Nm] | 131.24 |
| Service Factor | | 1 |
| Efficiency | | 0.52 |
| Inertia moment | [kgm ²] | 0.000244 |

Gear unit configuration

| | | |
|--------------|--|---------------------|
| Output shaft | | Hollow output shaft |
| Fixing | | Shaft mounting |
| Version | | PC |

Output radial and axial loads

| | | |
|-----------------------------------|-----|------|
| Ball bearings output radial load | [N] | 6700 |
| Taper bearings output radial load | [N] | 7900 |
| Ball bearings output axial load | [N] | 1340 |
| Taper bearings output axial load | [N] | 1580 |

Accessories

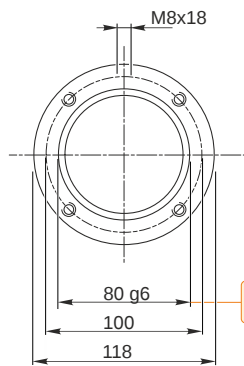
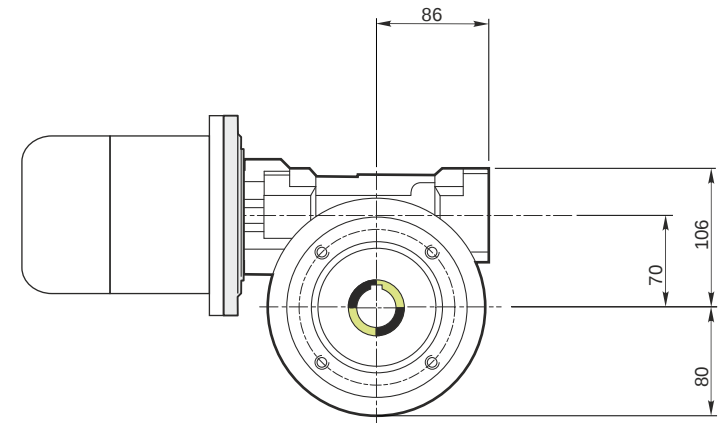
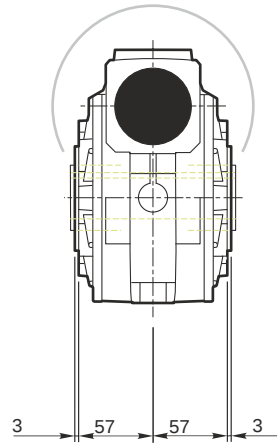
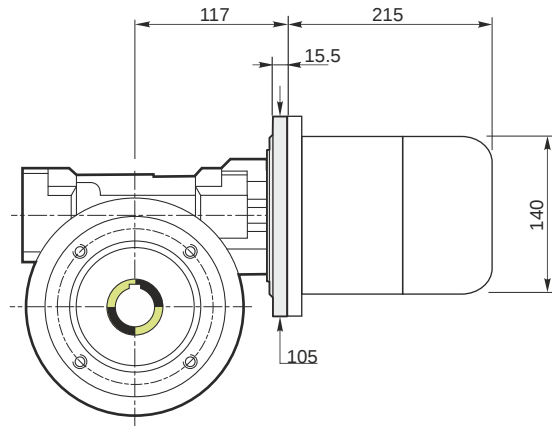
| | | |
|---------------------|--|-------|
| Hollow output shaft | | AC 28 |
|---------------------|--|-------|

Electric motor

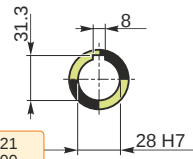
| | | |
|-------|------|-------|
| Size | | 71 B4 |
| Poles | | 4 |
| Power | [kW] | 0.37 |

Electric motor configuration

| | | |
|-----------------------|--|-----|
| Motor flange | | B14 |
| Terminal box position | | X3 |

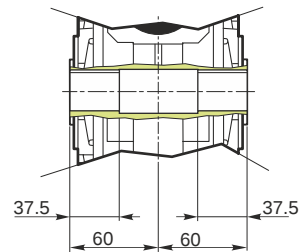


Hollow output shaft



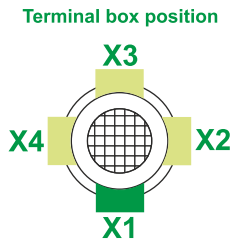
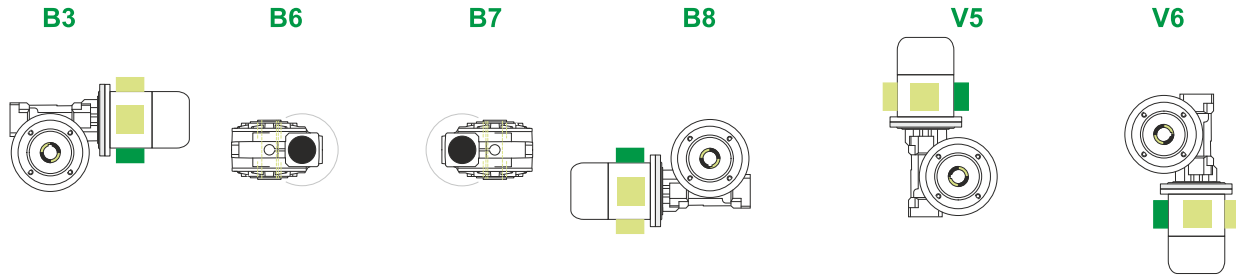
79.99
79.971

28.021
28.000



M RS 70 PC 100 71 B14 AC 28 MT 0.37 kW 71 B4 B14 X3 B3

Mounting positions



0.35



← Oil quantity [litres]

Lubricant type: Long life synthetic oil ISO VG320

Direction of rotation



Weight

| | |
|---------------------|-----|
| Gear unit [kg] | 9 |
| Electric motor [kg] | 6.2 |

Gearing data

| | |
|------------------|--------|
| Axial module | 1.15 |
| Number of starts | 1 |
| Lead angle | 2° 38' |
| Pressure angle | 20° |

Backdriving

- Static self-locking
- No back-driving
- Low dynamic back-driving

M RS 70 PC 100 71 B14 AC 28 MT 0.37 kW 71 B4 B14 X3 B3