

Input data

System of measurement		Metric
Input type		Gear motor
Input speed	[rpm]	1400
Output speed	[rpm]	200
Ratio (i=)		7
Frequency	[Hz]	50
Input options		IEC
Requested input power	[kW]	4
Service factor		1.5
Rated Power P1	[kW]	6.16

Output data

Gear unit M RS 85 PC 7 112 B14 AC 32 MT 4 kW 112 A4 B14 X3 B3

Type		RS - Worm speed reducers
Input type		M
Size		85
Ratio (i=)		7
Input flange		B14
Mounting position		B3
Input speed	[rpm]	1400
Output speed	[rpm]	200
Rated output torque	[Nm]	168.08
Service Factor		1.5
Efficiency		0.88
Inertia moment	[kgm ²]	0.000489

Gear unit configuration

Output shaft		Hollow output shaft
Fixing		Shaft mounting
Version		PC

Output radial and axial loads

Ball bearings output radial load	[N]	3300
Taper bearings output radial load	[N]	4200
Ball bearings output axial load	[N]	660
Taper bearings output axial load	[N]	840

Accessories

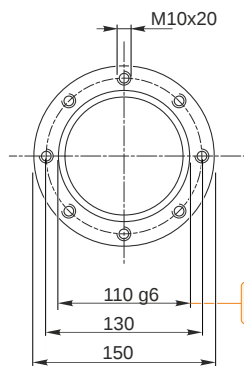
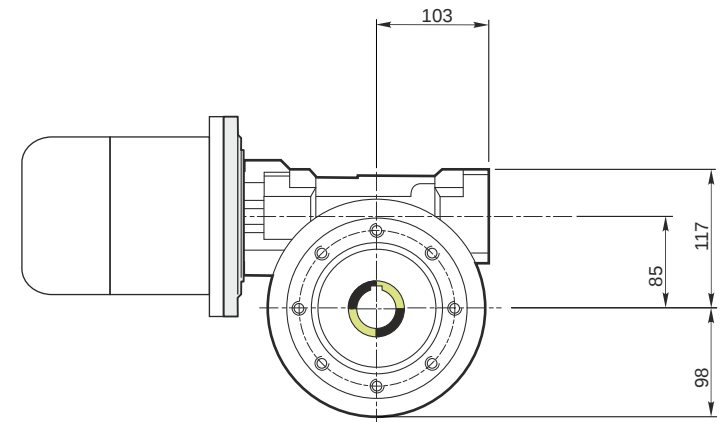
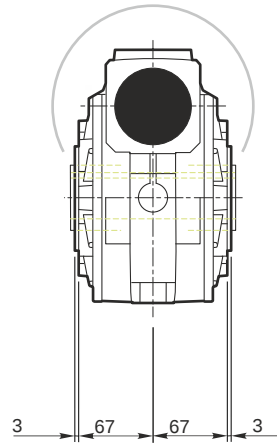
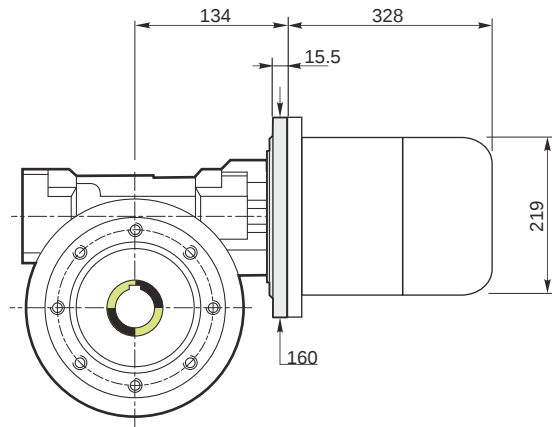
Hollow output shaft		AC 32
---------------------	--	-------

Electric motor

Size		112 A4
Poles		4
Power	[kW]	4

Electric motor configuration

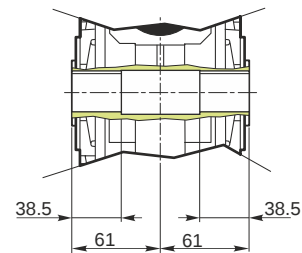
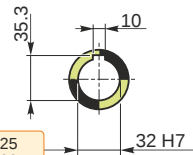
Motor flange		B14
Terminal box position		X3



109.988
109.966

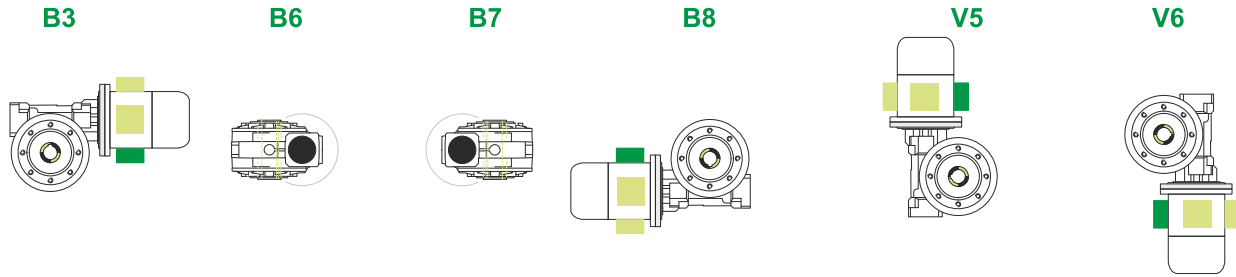
32.025
32.000

Hollow output shaft

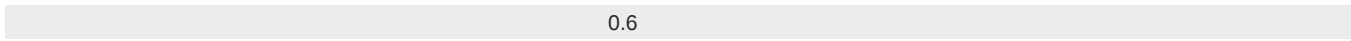
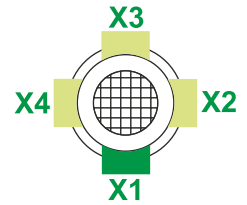


M RS 85 PC 7 112 B14 AC 32 MT 4 kW 112 A4 B14 X3 B3

Mounting positions



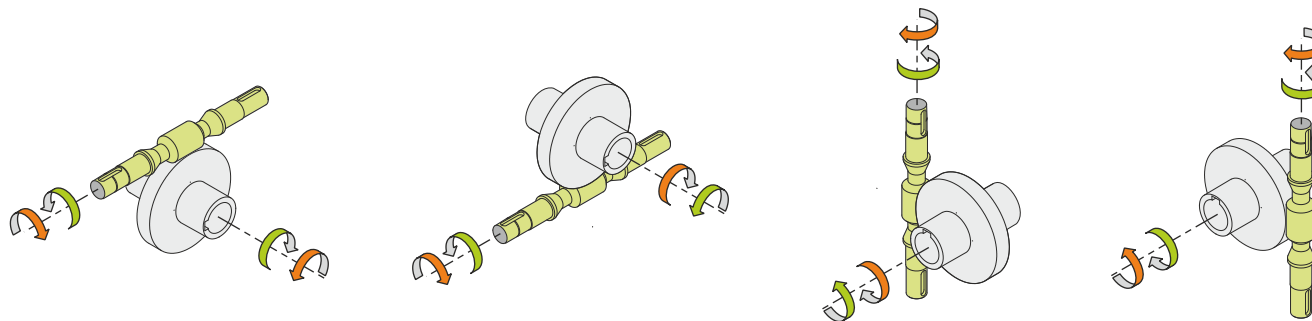
Terminal box position



← Oil quantity [litres]

Lubricant type: Long life synthetic oil ISO VG320

Direction of rotation



Weight

Gear unit [kg]	13.5
Electric motor [kg]	29

Gearing data

Axial module	4.7
Number of starts	4
Lead angle	26° 05'
Pressure angle	20°

Backdriving

- Static back-driving
- Quick back-driving
- Dynamic back-driving