

### Input data

System of measurement		Metric
Input type		Gear motor
Input speed	[rpm]	1400
Output speed	[rpm]	93.33
Ratio (i=)		15
Frequency	[Hz]	50
Input options		IEC
Requested input power	[kW]	3
Service factor		1.1
Rated Power P1	[kW]	3.4

### Output data

<b>Gear unit</b>	<b>M RS 85 PC 15 100 B14 AC 32 MT 3 kW 100 B4 B14 X3 B3</b>
------------------	---

Type		RS - Worm speed reducers
Input type		M
Size		85
Ratio (i=)		15
Input flange		B14
Mounting position		B3
Input speed	[rpm]	1400
Output speed	[rpm]	93.33
Rated output torque	[Nm]	254.78
Service Factor		1.1
Efficiency		0.83
Inertia moment	[kgm <sup>2</sup> ]	0.000372

#### Gear unit configuration

Output shaft		Hollow output shaft
Fixing		Shaft mounting
Version		PC

#### Output radial and axial loads

Ball bearings output radial load	[N]	4400
Taper bearings output radial load	[N]	5500
Ball bearings output axial load	[N]	880
Taper bearings output axial load	[N]	1100

#### Accessories

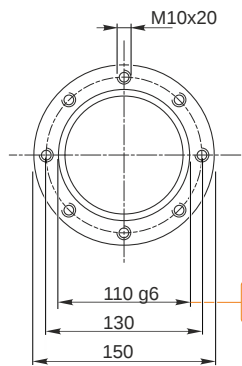
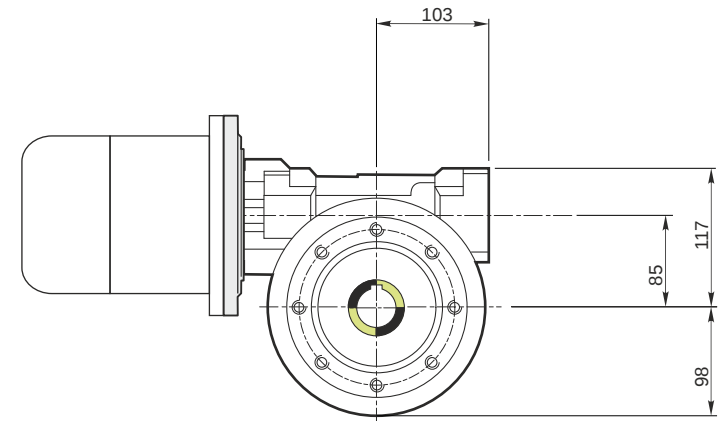
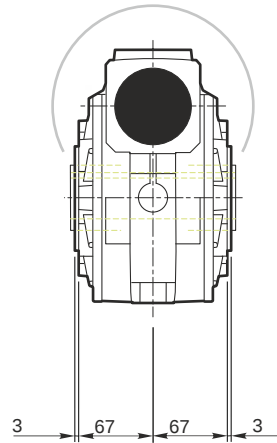
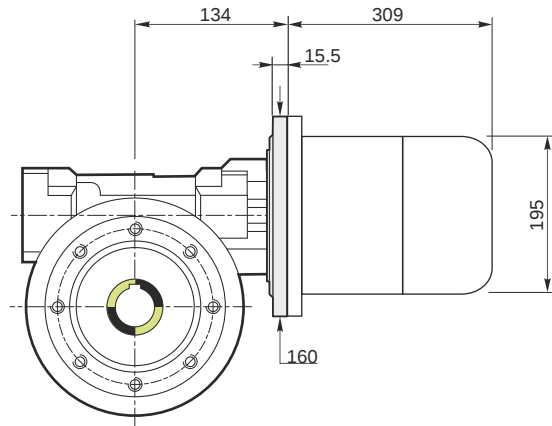
Hollow output shaft		AC 32
---------------------	--	-------

### Electric motor

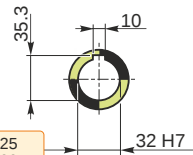
Size		100 B4
Poles		4
Power	[kW]	3

#### Electric motor configuration

Motor flange		B14
Terminal box position		X3

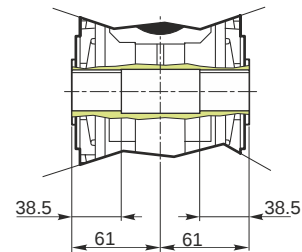


Hollow output shaft



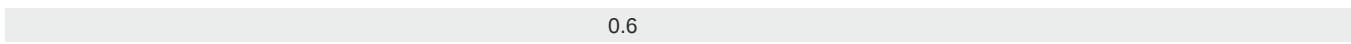
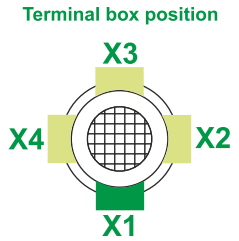
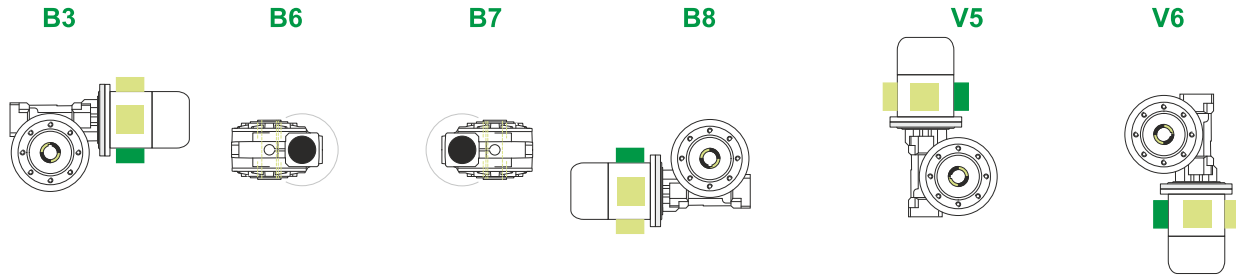
109.988  
109.966

32.025  
32.000



**M RS 85 PC 15 100 B14 AC 32 MT 3 kW 100 B4 B14 X3 B3**

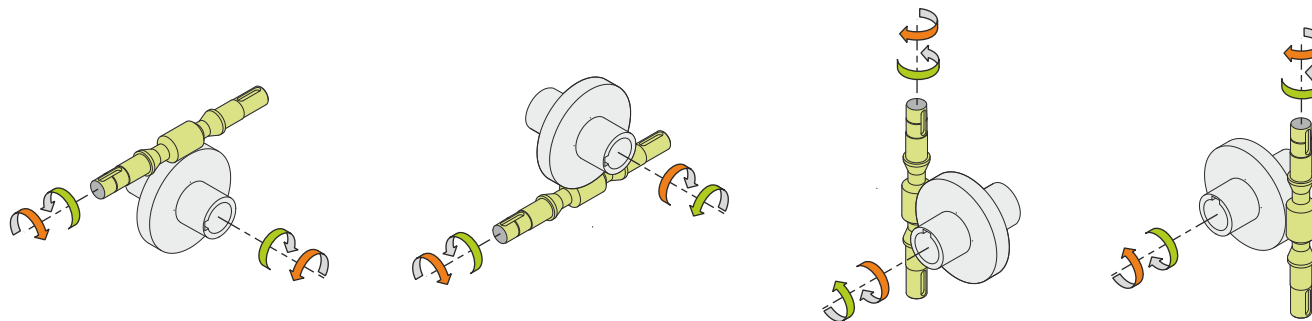
**Mounting positions**



← Oil quantity [litres]

Lubricant type: Long life synthetic oil ISO VG320

**Direction of rotation**



**Weight**

Gear unit [kg]	13.5
Electric motor [kg]	21

**Gearing data**

Axial module	4.4
Number of starts	2
Lead angle	13° 02'
Pressure angle	20°

**Backdriving**

- Static back-driving
- Quick back-driving
- Dynamic back-driving

**M RS 85 PC 15 100 B14 AC 32 MT 3 kW 100 B4 B14 X3 B3**