

Input data

System of measurement		Metric
Input type		Gear motor
Input speed	[rpm]	1400
Output speed	[rpm]	200
Ratio (i=)		7
Frequency	[Hz]	50
Input options		IEC
Requested input power	[kW]	9.2
Service factor		1.4
Rated Power P1	[kW]	12.49

Output data

Gear unit **M RS 110 PC 7 132 B14 AC 42 MT 9.2 kW 132 ML4 B14 X3 B3**

Type		RS - Worm speed reducers
Input type		M
Size		110
Ratio (i=)		7
Input flange		B14
Mounting position		B3
Input speed	[rpm]	1400
Output speed	[rpm]	200
Rated output torque	[Nm]	386.58
Service Factor		1.4
Efficiency		0.88
Inertia moment	[kgm ²]	0.002216

Gear unit configuration

Output shaft		Hollow output shaft
Fixing		Shaft mounting
Version		PC

Output radial and axial loads

Ball bearings output radial load	[N]	3900
Taper bearings output radial load	[N]	5000
Ball bearings output axial load	[N]	780
Taper bearings output axial load	[N]	1000

Accessories

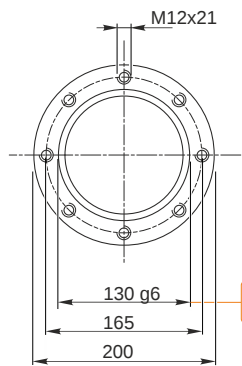
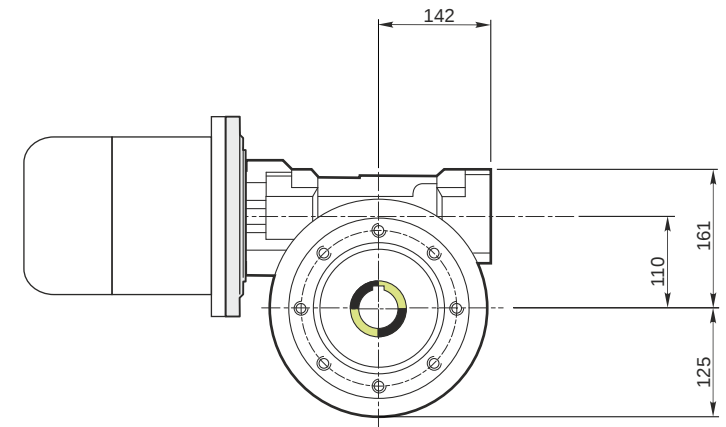
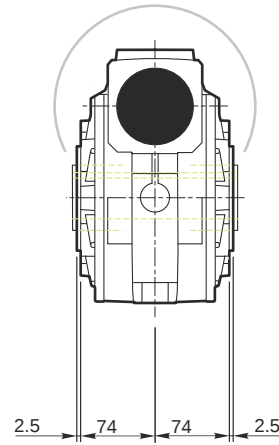
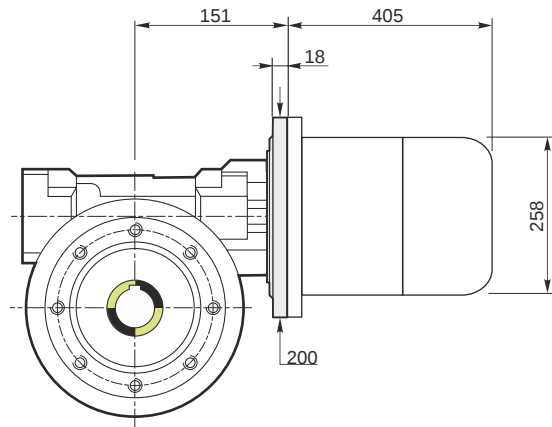
Hollow output shaft		AC 42
---------------------	--	-------

Electric motor

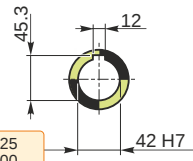
Size		132 ML4
Poles		4
Power	[kW]	9.2

Electric motor configuration

Motor flange		B14
Terminal box position		X3

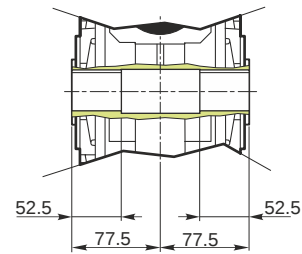


Hollow output shaft



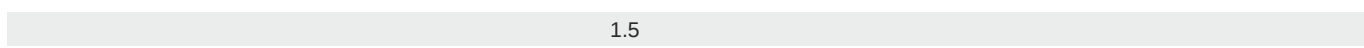
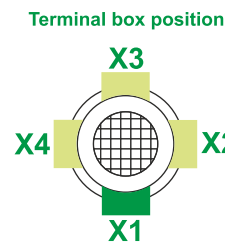
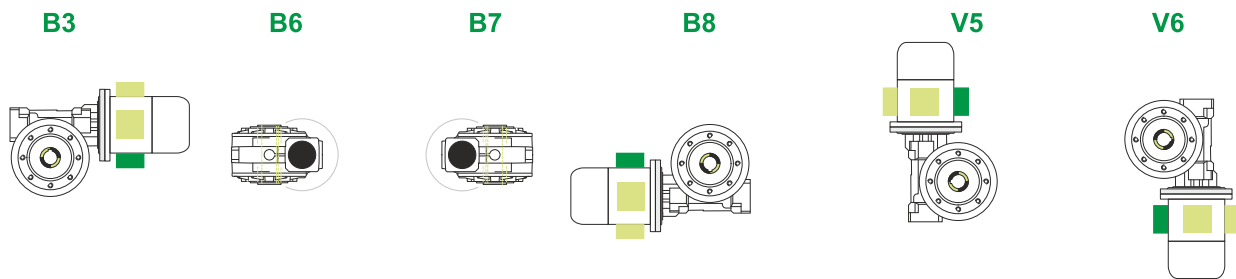
129.986
129.961

42.025
42.000



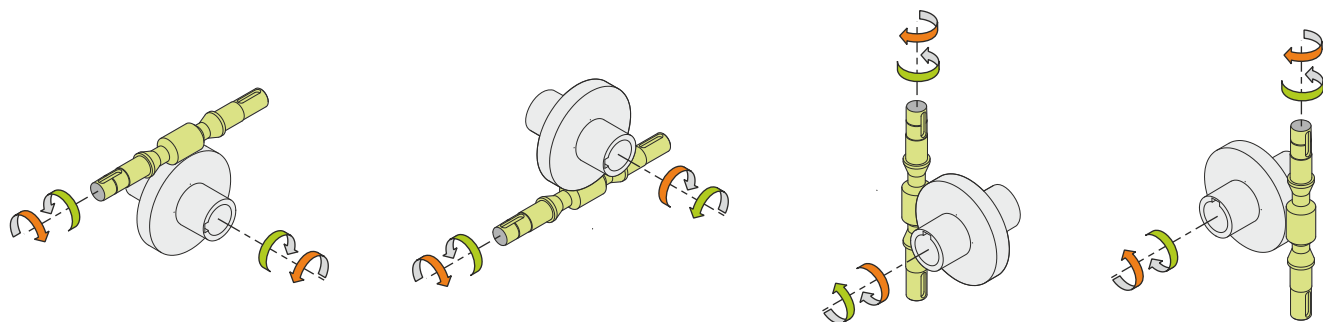
M RS 110 PC 7 132 B14 AC 42 MT 9.2 kW 132 ML4 B14 X3 B3

Mounting positions



Lubricant type: Long life synthetic oil ISO VG320

Direction of rotation



Weight

Gear unit [kg]	39
Electric motor [kg]	52

Gearing data

Axial module	6.1
Number of starts	4
Lead angle	26° 22'
Pressure angle	20°

Backdriving

- Static back-driving
- Quick back-driving
- Dynamic back-driving