

Input data

System of measurement		Metric
Input type		Gear motor
Input speed	[rpm]	1400
Output speed	[rpm]	35
Ratio (i=)		40
Frequency	[Hz]	50
Input options		IEC
Requested input power	[kW]	3
Service factor		1.2
Rated Power P1	[kW]	3.47

Output data

Gear unit **M RS 110 PC 40 100 B14 AC 42 MT 3 kW 100 B4 B14 X3 B3**

Type		RS - Worm speed reducers
Input type		M
Size		110
Ratio (i=)		40
Input flange		B14
Mounting position		B3
Input speed	[rpm]	1400
Output speed	[rpm]	35
Rated output torque	[Nm]	597.56
Service Factor		1.2
Efficiency		0.73
Inertia moment	[kgm ²]	0.001696

Gear unit configuration

Output shaft		Hollow output shaft
Fixing		Shaft mounting
Version		PC

Output radial and axial loads

Ball bearings output radial load	[N]	6700
Taper bearings output radial load	[N]	9300
Ball bearings output axial load	[N]	1340
Taper bearings output axial load	[N]	1860

Accessories

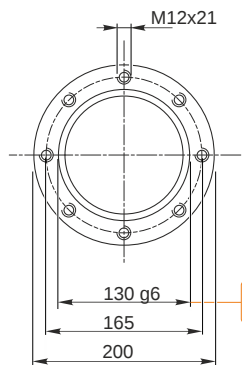
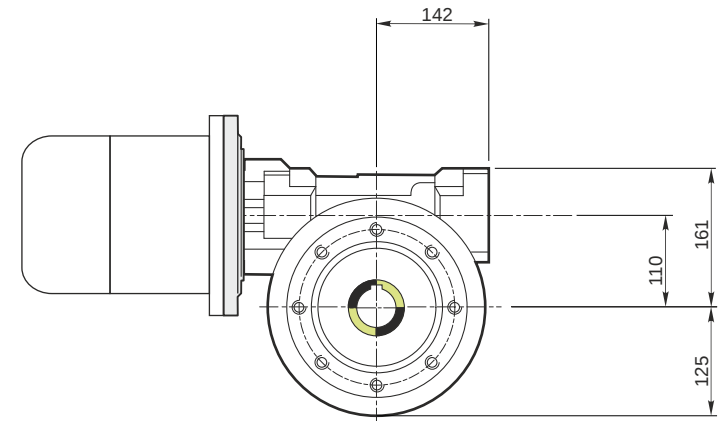
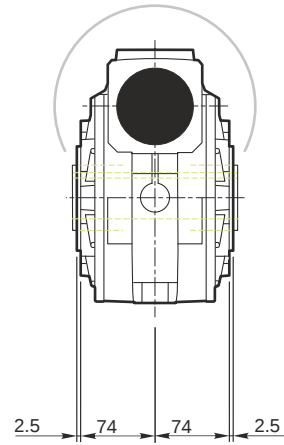
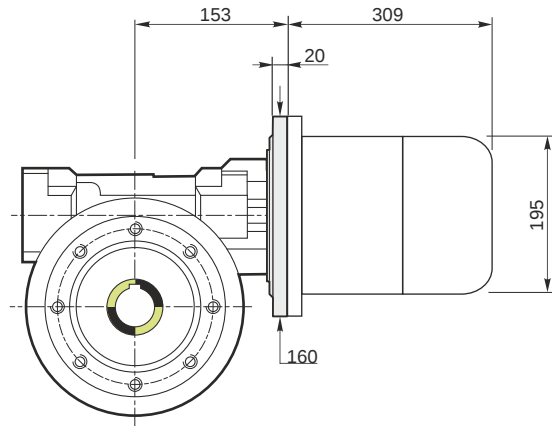
Hollow output shaft		AC 42
---------------------	--	-------

Electric motor

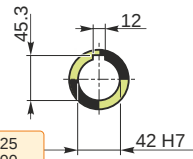
Size		100 B4
Poles		4
Power	[kW]	3

Electric motor configuration

Motor flange		B14
Terminal box position		X3

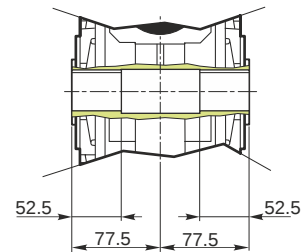


Hollow output shaft



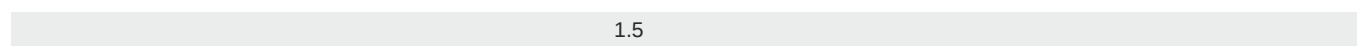
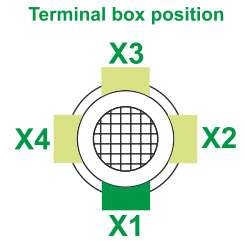
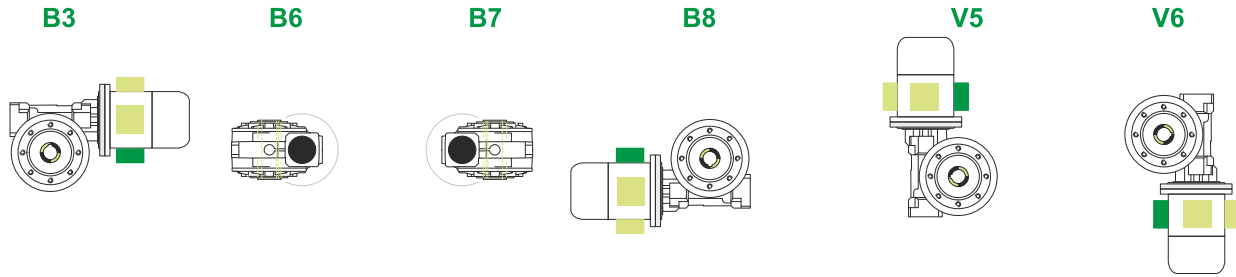
129.986
129.961

42.025
42.000



M RS 110 PC 40 100 B14 AC 42 MT 3 kW 100 B4 B14 X3 B3

Mounting positions



← Oil quantity [litres]

Lubricant type: Long life synthetic oil ISO VG320

Direction of rotation



Weight

Gear unit [kg]	39
Electric motor [kg]	21

Gearing data

Axial module	4.4
Number of starts	1
Lead angle	5° 42'
Pressure angle	20°

Backdriving

Static self-locking
Slow back-driving in case of vibrations
Low dynamic back-driving

M RS 110 PC 40 100 B14 AC 42 MT 3 kW 100 B4 B14 X3 B3