

Input data

System of measurement		Metric
Input type		Gear motor
Input speed	[rpm]	1400
Output speed	[rpm]	28.57
Ratio (i=)		49
Frequency	[Hz]	50
Input options		IEC
Requested input power	[kW]	4
Service factor		1
Rated Power P1	[kW]	3.95

Output data

Gear unit **M RS 130 PC 49 112 B14 AC 48 MT 4 kW 112 A4 B14 X3 B3**

Type		RS - Worm speed reducers
Input type		M
Size		130
Ratio (i=)		49
Input flange		B14
Mounting position		B3
Input speed	[rpm]	1400
Output speed	[rpm]	28.57
Rated output torque	[Nm]	962.64
Service Factor		1
Efficiency		0.72
Inertia moment	[kgm ²]	0.002672

Gear unit configuration

Output shaft		Hollow output shaft
Fixing		Shaft mounting
Version		PC

Output radial and axial loads

Ball bearings output radial load	[N]	8800
Taper bearings output radial load	[N]	12900
Ball bearings output axial load	[N]	1760
Taper bearings output axial load	[N]	2580

Accessories

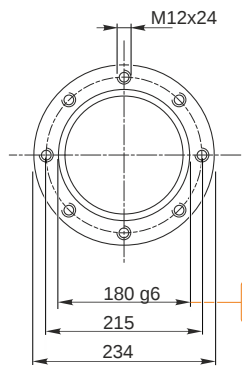
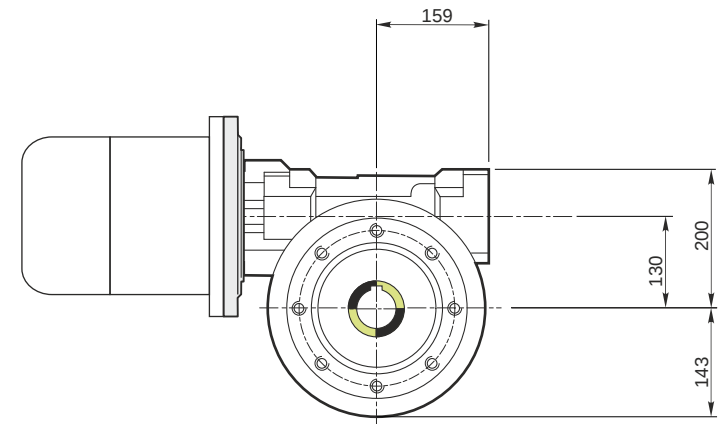
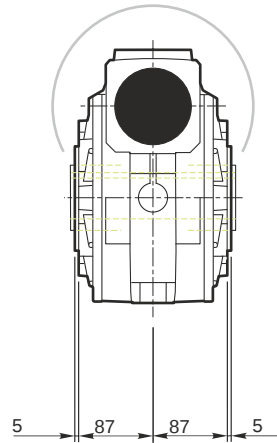
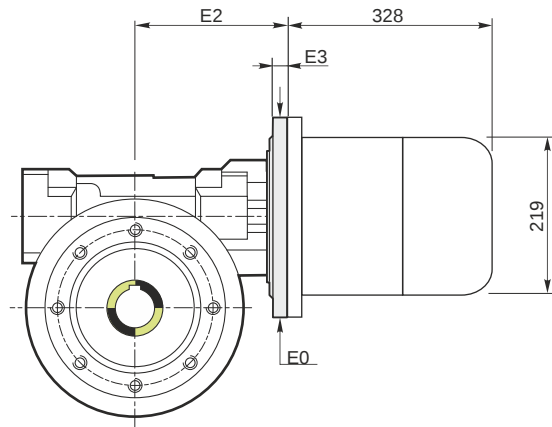
Hollow output shaft		AC 48
---------------------	--	-------

Electric motor

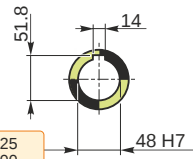
Size		112 A4
Poles		4
Power	[kW]	4

Electric motor configuration

Motor flange		B14
Terminal box position		X3

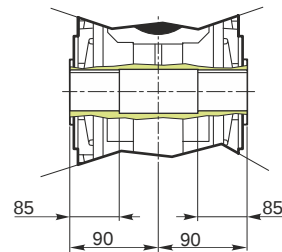


Hollow output shaft



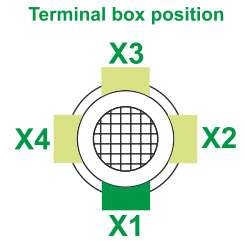
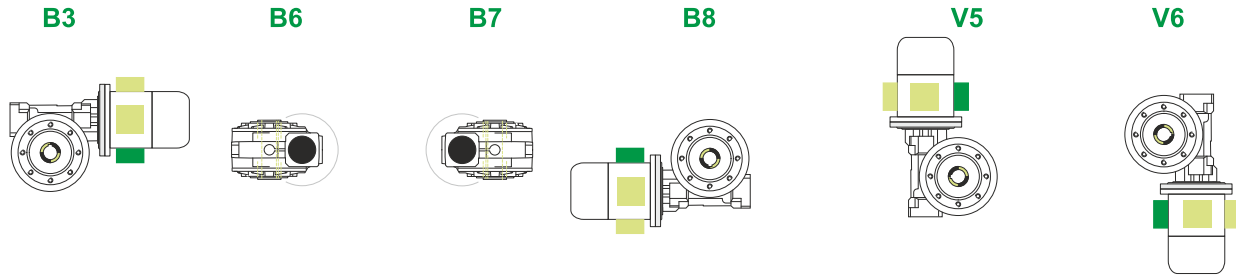
179.986
179.961

48.025
48.000



M RS 130 PC 49 112 B14 AC 48 MT 4 kW 112 A4 B14 X3 B3

Mounting positions



2.75



← Oil quantity [litres]

Lubricant type: Long life synthetic oil ISO VG320

Direction of rotation



Weight

Gear unit [kg]	50
Electric motor [kg]	29

Gearing data

Axial module	4.35
Number of starts	1
Lead angle	5° 18'
Pressure angle	20°

Backdriving

Static self-locking
Slow back-driving in case of vibrations
Low dynamic back-driving

M RS 130 PC 49 112 B14 AC 48 MT 4 kW 112 A4 B14 X3 B3