

Input data

System of measurement		Metric
Input type		Gear motor
Input speed	[rpm]	1400
Output speed	[rpm]	25
Ratio (i=)		56
Frequency	[Hz]	50
Input options		IEC
Requested input power	[kW]	3
Service factor		1.2
Rated Power P1	[kW]	3.71

Output data

Gear unit **M RS 130 PC 56 100 B14 AC 48 MT 3 kW 100 B4 B14 X3 B3**

Type		RS - Worm speed reducers
Input type		M
Size		130
Ratio (i=)		56
Input flange		B14
Mounting position		B3
Input speed	[rpm]	1400
Output speed	[rpm]	25
Rated output torque	[Nm]	813.66
Service Factor		1.2
Efficiency		0.71
Inertia moment	[kgm ²]	0.002666

Gear unit configuration

Output shaft		Hollow output shaft
Fixing		Shaft mounting
Version		PC

Output radial and axial loads

Ball bearings output radial load	[N]	9500
Taper bearings output radial load	[N]	14200
Ball bearings output axial load	[N]	1900
Taper bearings output axial load	[N]	2840

Accessories

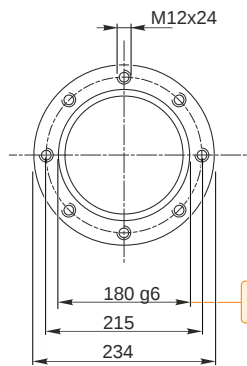
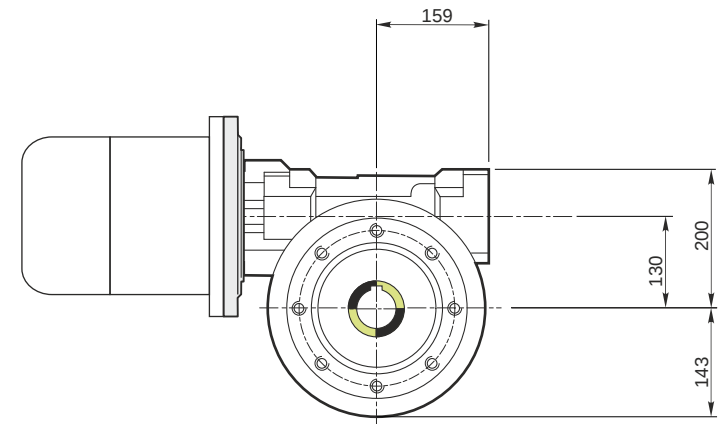
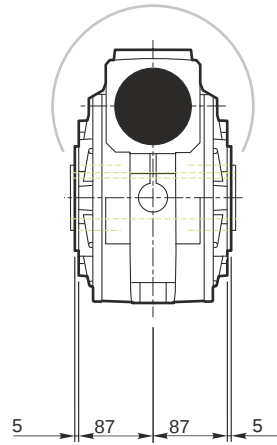
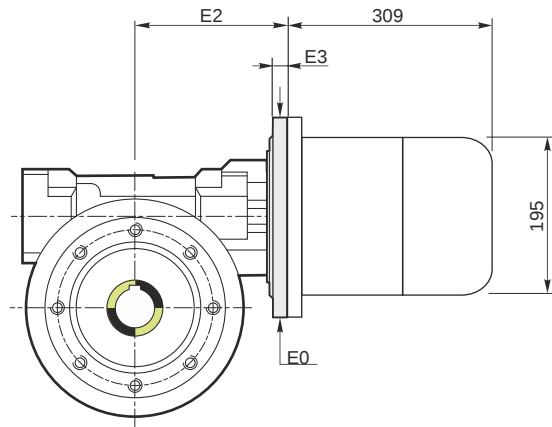
Hollow output shaft		AC 48
---------------------	--	-------

Electric motor

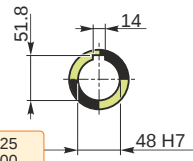
Size		100 B4
Poles		4
Power	[kW]	3

Electric motor configuration

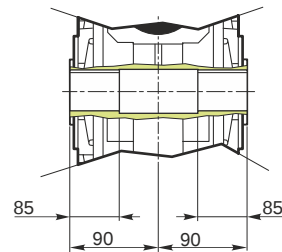
Motor flange		B14
Terminal box position		X3



Hollow output shaft

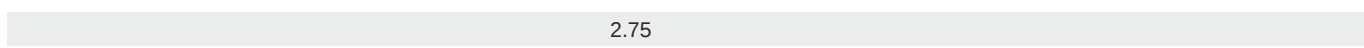
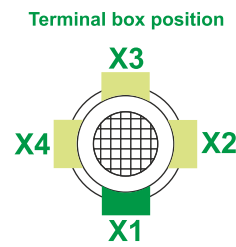
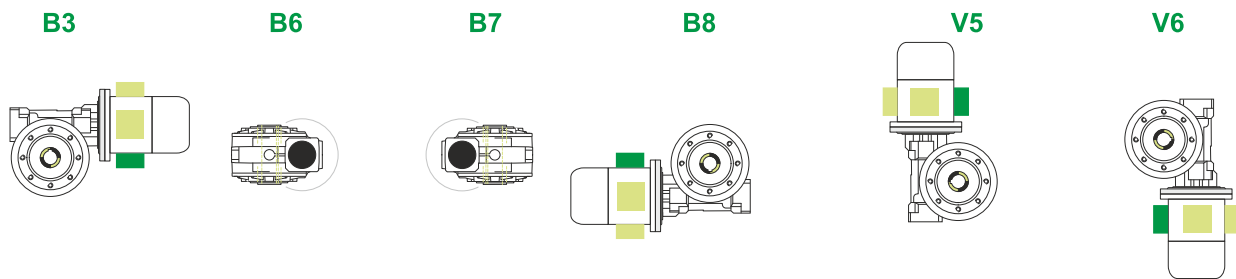


179.986	48,025
179.961	48,000



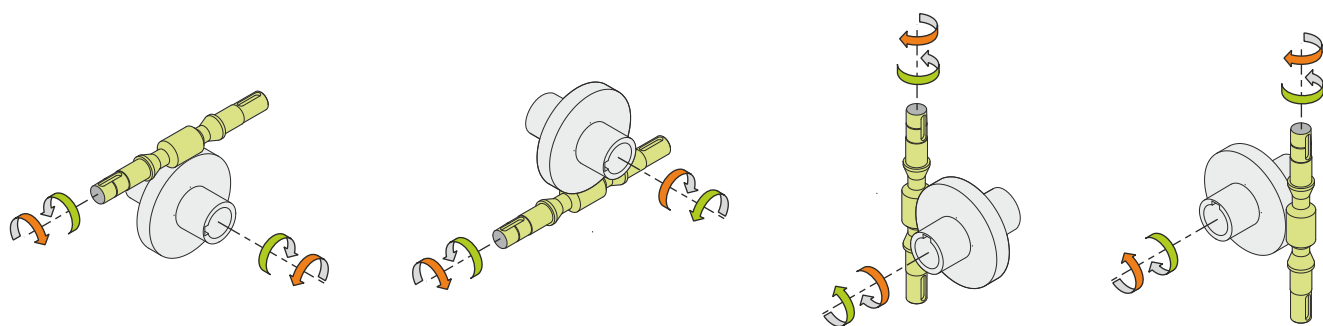
M RS 130 PC 56 100 B14 AC 48 MT 3 kW 100 B4 B14 X3 B3

Mounting positions



Lubricant type: Long life synthetic oil ISO VG320

Direction of rotation



Weight

Gear unit [kg]	50
Electric motor [kg]	21

Gearing data

Axial module	4.00
Number of starts	1
Lead angle	6° 20'
Pressure angle	20°

Backdriving

Static self-locking
Slow back-driving in case of vibrations
Low dynamic back-driving