

### Input data

System of measurement		Metric
Input type		Gear motor
Input speed	[rpm]	1400
Output speed	[rpm]	70
Ratio (i=)		20
Frequency	[Hz]	50
Input options		IEC
Requested input power	[kW]	11
Service factor		1.1
Rated Power P1	[kW]	12.48

### Output data

#### **Gear unit** M RS 150 PC 20 160 B5 AC 55 MT 11 kW 160 M4 B5 X3 B3

Type		RS - Worm speed reducers
Input type		M
Size		150
Ratio (i=)		20
Input flange		B5
Mounting position		B3
Input speed	[rpm]	1400
Output speed	[rpm]	70
Rated output torque	[Nm]	1260.6
Service Factor		1.1
Efficiency		0.84
Inertia moment	[kgm <sup>2</sup> ]	0.006086

#### **Gear unit configuration**

Output shaft		Hollow output shaft
Fixing		Shaft mounting
Version		PC

#### **Output radial and axial loads**

Ball bearings output radial load	[N]	8800
Taper bearings output radial load	[N]	13200
Ball bearings output axial load	[N]	1760
Taper bearings output axial load	[N]	2640

#### **Accessories**

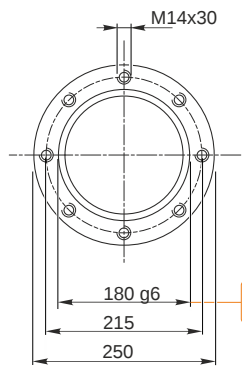
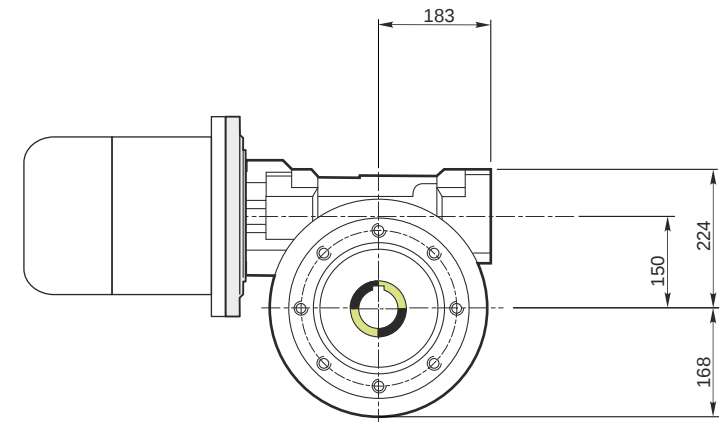
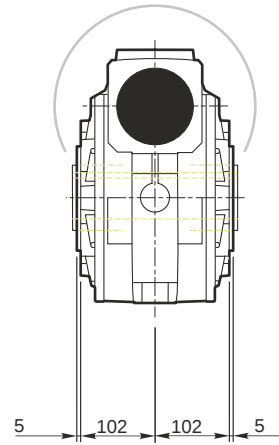
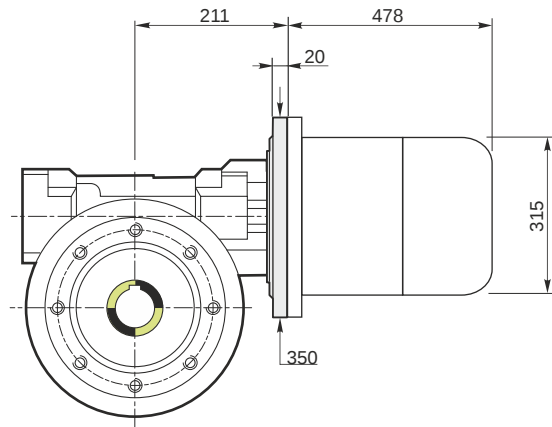
Hollow output shaft		AC 55
---------------------	--	-------

#### **Electric motor**

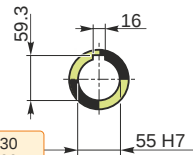
Size		160 M4
Poles		4
Power	[kW]	11

#### **Electric motor configuration**

Motor flange		B5
Terminal box position		X3

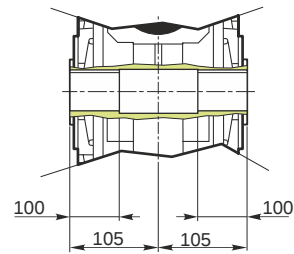


Hollow output shaft



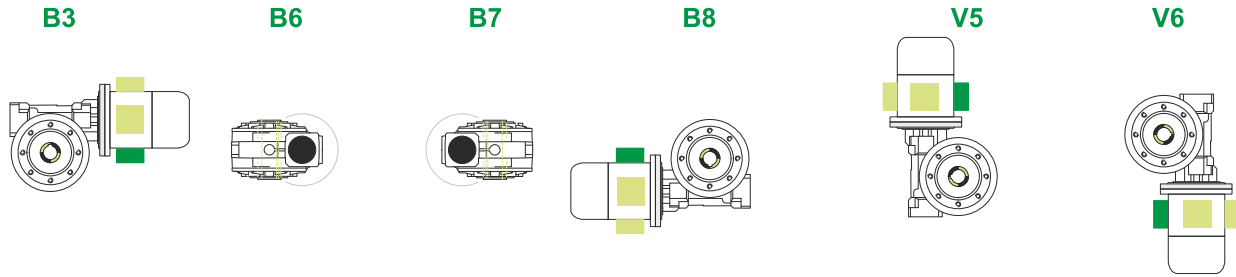
179.986  
179.961

55.030  
55.000

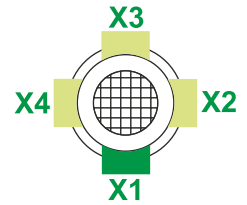


**M RS 150 PC 20 160 B5 AC 55 MT 11 kW 160 M4 B5 X3 B3**

**Mounting positions**



Terminal box position



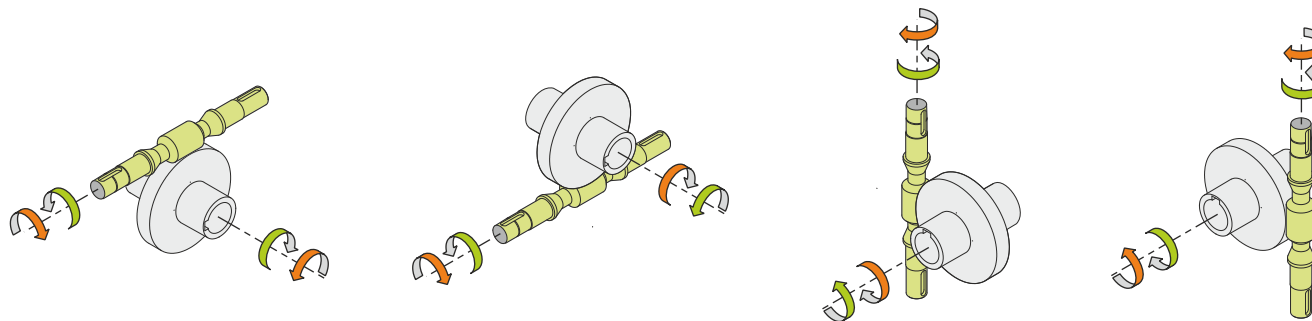
4.4



← Oil quantity [litres]

Lubricant type: Long life synthetic oil ISO VG320

**Direction of rotation**



**Weight**

Gear unit [kg]	80
Electric motor [kg]	90

**Gearing data**

Axial module	6.20
Number of starts	2
Lead angle	13° 24'
Pressure angle	20°

**Backdriving**

- Static back-driving
- Quick back-driving
- Dynamic back-driving