

Input data

System of measurement		Metric
Input type		Gear motor
Input speed	[rpm]	1400
Output speed	[rpm]	0.63
Ratio (i=)		2240
Frequency	[Hz]	50
Input options		IEC
Requested input power	[kW]	0.06
Service factor		0.6
Rated Power P1	[kW]	0.04

Warning! The torque generated by the selected motor is above the gearbox rated output torque; please refer to the gearbox rated output torque.

Output data

Gear unit	M RT/RT 28/50 B3 21 2240 56 B14 AC 24 MT 0.06 kW 56 A4 B14 X3
------------------	--

Type		RT/RT - Worm speed reducers
Input type		M
Size		28/50
Ratio (i=)		2240
Gearbox ratio		40.00
Pre-stage ratio		56.00
Input flange		B14
Input speed	[rpm]	1400
Output speed	[rpm]	0.63
Rated output torque	[Nm]	125
Service Factor		0.6
Efficiency		0.22

Gear unit configuration

Output shaft		Hollow output shaft
Fixing		Universal
Version		B3
Attachment position		21

Output radial and axial loads

Ball bearings output radial load	[N]	3200
Taper bearings output radial load	[N]	4200
Ball bearings output axial load	[N]	640
Taper bearings output axial load	[N]	840

Accessories

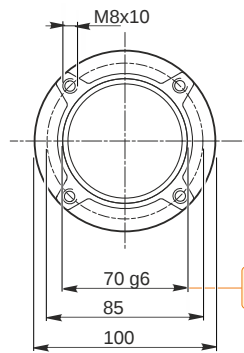
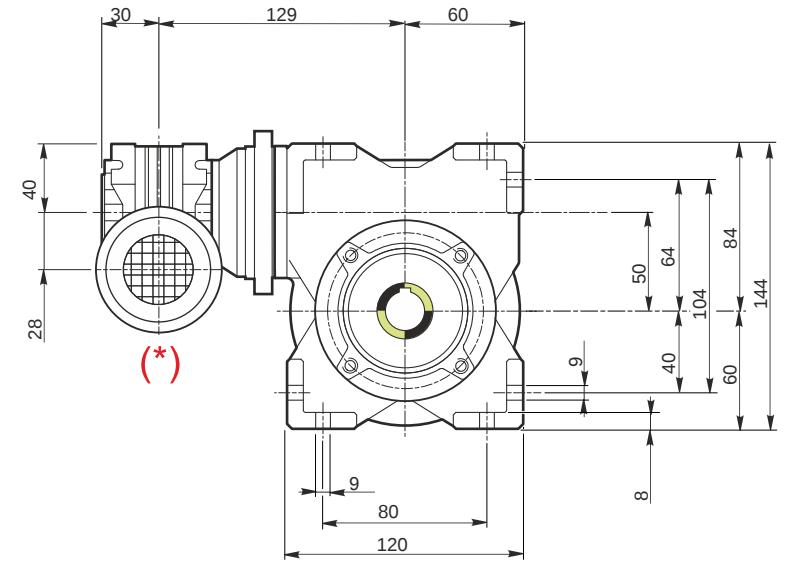
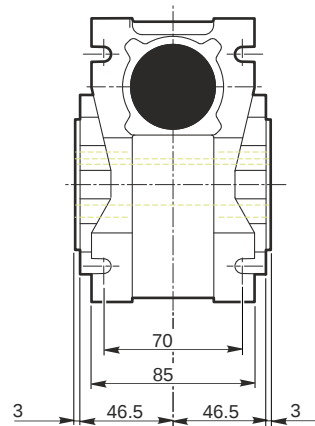
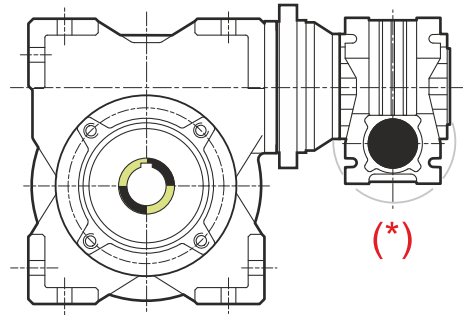
Hollow output shaft		AC 24
---------------------	--	-------

Electric motor

Size		56 A4
Poles		4
Power	[kW]	0.06

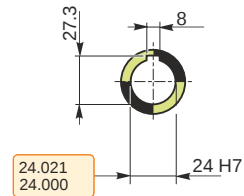
Electric motor configuration

Motor flange		B14
Terminal box position		X3

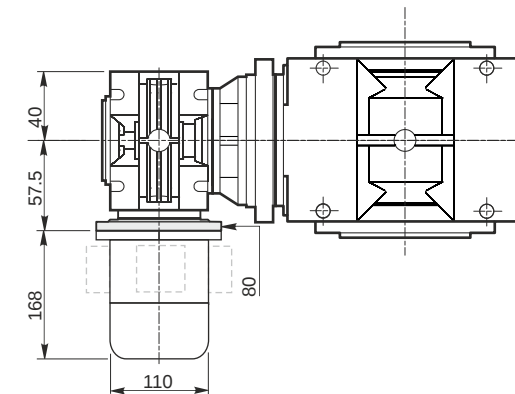
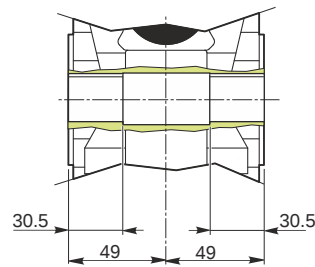


69.990
69.971

Hollow output shaft

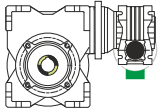


24.021
24.000

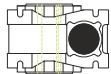


Mounting positions

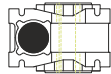
B3



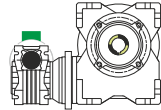
B6



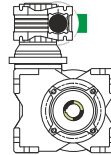
B7



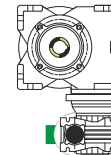
B8



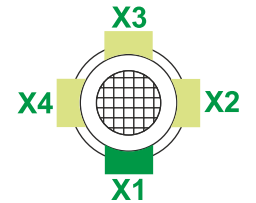
V5



V6



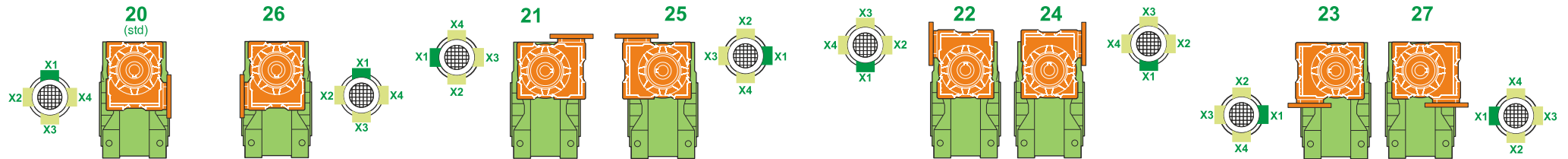
Terminal box position



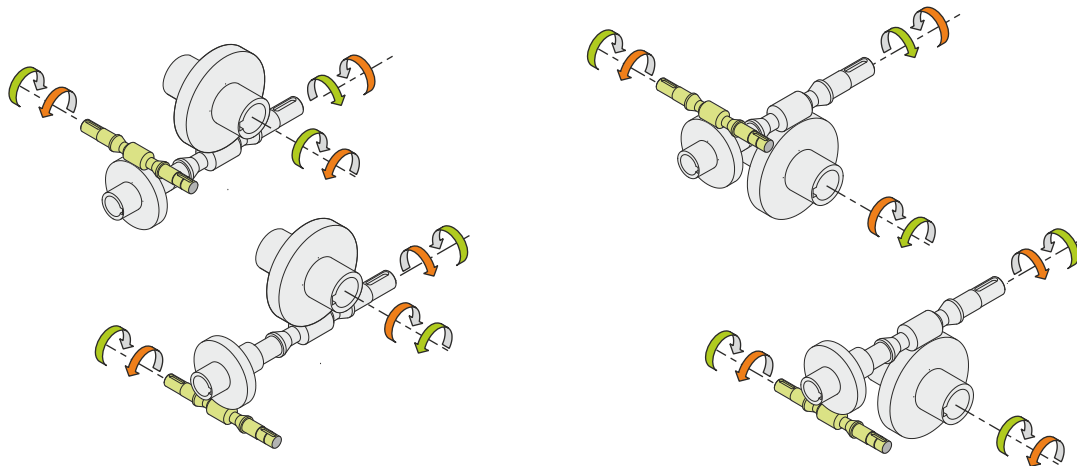
0.03	1	2	1	← Oil quantity [litres]
0.13	2	1	2	

Lubricant type: Long life synthetic oil ISO VG320

Attachment position



Direction of rotation



Weight

Gear unit [kg]	5.2
Electric motor [kg]	2.6

Gearing data

	Axial module	1.9
	Number of starts	1
	Lead angle	4° 31'
	Pressure angle	20°

Backdriving

Static self-locking
Slow back-driving in case of vibrations
Low dynamic back-driving

M RT/RT 28/50 B3 21 2240 56 B14 AC 24 MT 0.06 kW 56 A4 B14 X3