

### Input data

System of measurement		Metric
Input type		Gear motor
Input speed	[rpm]	1400
Output speed	[rpm]	3.33
Ratio (i=)		420
Frequency	[Hz]	50
Input options		IEC
Requested input power	[kW]	0.18
Service factor		0.9
Rated Power P1	[kW]	0.16

### Output data

<b>Gear unit</b>	<b>M RT/RT 28/60 B3 21 420 63 B14 AC 25 MT 0.18 kW 63 B4 B14 X3</b>
------------------	---

Type		RT/RT - Worm speed reducers
Input type		M
Size		28/60
Ratio (i=)		420
Gearbox ratio		28.00
Pre-stage ratio		15.00
Input flange		B14
Input speed	[rpm]	1400
Output speed	[rpm]	3.33
Rated output torque	[Nm]	216.59
Service Factor		0.9
Efficiency		0.42

#### Gear unit configuration

Output shaft		Hollow output shaft
Fixing		Universal
Version		B3
Attachment position		21

#### Output radial and axial loads

Ball bearings output radial load	[N]	5600
Taper bearings output radial load	[N]	6600
Ball bearings output axial load	[N]	1120
Taper bearings output axial load	[N]	1320

#### Accessories

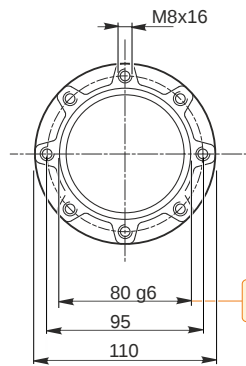
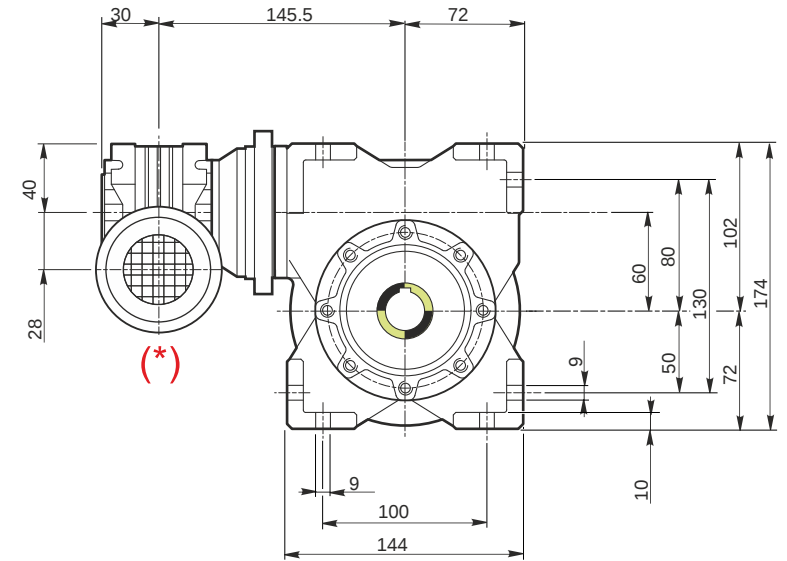
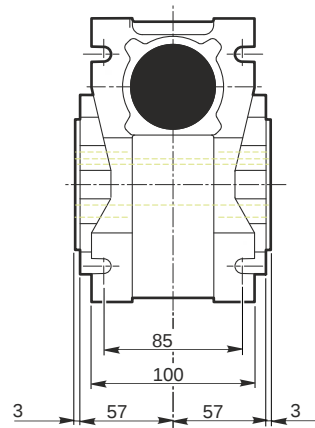
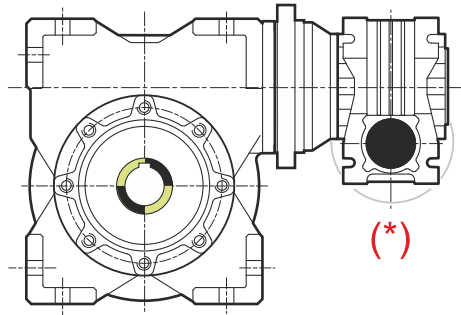
Hollow output shaft		AC 25
---------------------	--	-------

#### Electric motor

Size		63 B4
Poles		4
Power	[kW]	0.18

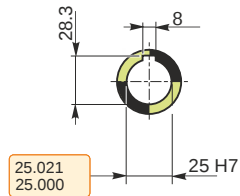
#### Electric motor configuration

Motor flange		B14
Terminal box position		X3

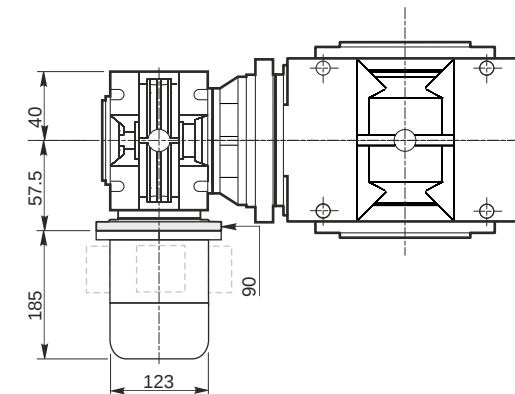
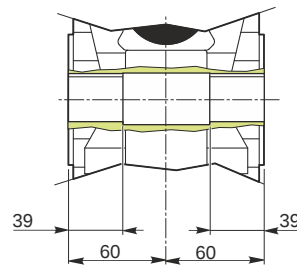


79.990  
79.971

*Hollow output shaft*

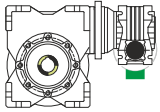


25.021  
25.000

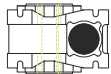


**Mounting positions**

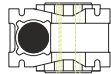
**B3**



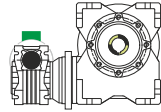
**B6**



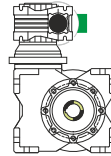
**B7**



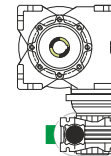
**B8**



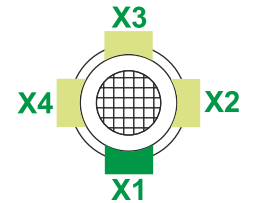
**V5**



**V6**



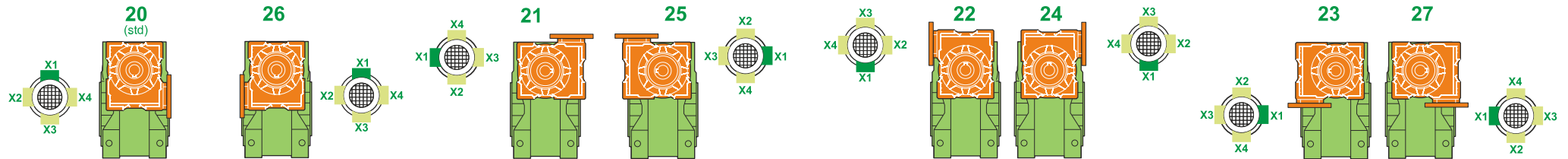
Terminal box position



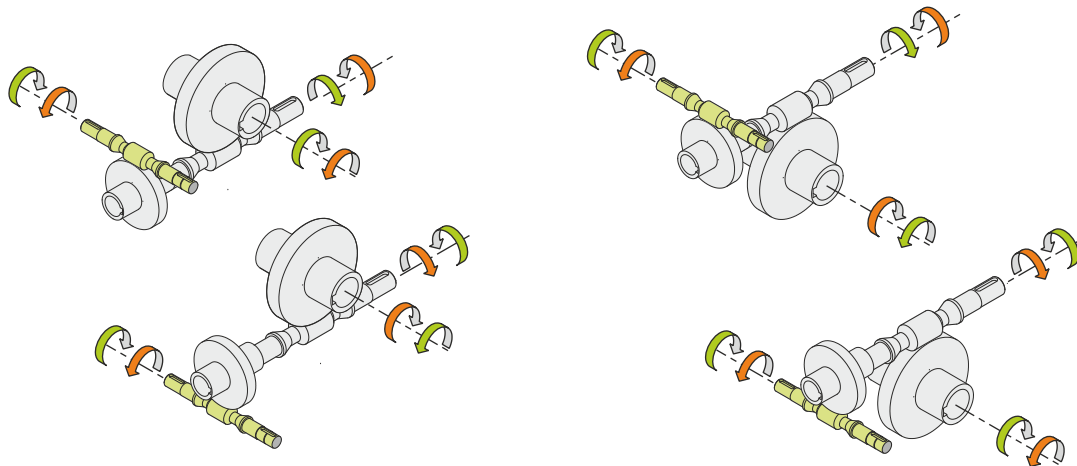
0.03	1	2	1	← Oil quantity [litres]
0.23	2	1	2	

Lubricant type: Long life synthetic oil ISO VG320

**Attachment position**



**Direction of rotation**



**Weight**

Gear unit [kg]	7.9
Electric motor [kg]	4.3

**Gearing data**

	Axial module	3.3
	Number of starts	1
	Lead angle	6° 49'
	Pressure angle	20°

**Backdriving**

Static self-locking  
Slow back-driving in case of vibrations  
Low dynamic back-driving

**M RT/RT 28/60 B3 21 420 63 B14 AC 25 MT 0.18 kW 63 B4 B14 X3**