

### Input data

|                       |       |            |
|-----------------------|-------|------------|
| System of measurement |       | Metric     |
| Input type            |       | Gear motor |
| Input speed           | [rpm] | 1400       |
| Output speed          | [rpm] | 2.5        |
| Ratio (i=)            |       | 560        |
| Frequency             | [Hz]  | 50         |
| Input options         |       | IEC        |
| Requested input power | [kW]  | 0.25       |
| Service factor        |       | 1          |
| Rated Power P1        | [kW]  | 0.25       |

### Output data

|                  |   |
|------------------|---|
| <b>Gear unit</b> | <b>M RT/RT 40/70 B3 21 560 71 B14 AC 28 MT 0.25 kW 71 A4 B14 X3</b> |
|------------------|---|

|                     |       |                             |
|---------------------|-------|-----------------------------|
| Type                |       | RT/RT - Worm speed reducers |
| Input type          |       | M                           |
| Size                |       | 40/70                       |
| Ratio (i=)          |       | 560                         |
| Gearbox ratio       |       | 28.00                       |
| Pre-stage ratio     |       | 20.00                       |
| Input flange        |       | B14                         |
| Input speed         | [rpm] | 1400                        |
| Output speed        | [rpm] | 2.5                         |
| Rated output torque | [Nm]  | 401.1                       |
| Service Factor      |       | 1                           |
| Efficiency          |       | 0.42                        |

#### Gear unit configuration

|                     |  |                     |
|---------------------|--|---------------------|
| Output shaft        |  | Hollow output shaft |
| Fixing              |  | Universal           |
| Version             |  | B3                  |
| Attachment position |  | 21                  |

#### Output radial and axial loads

|                                   |     |      |
|-----------------------------------|-----|------|
| Ball bearings output radial load  | [N] | 6700 |
| Taper bearings output radial load | [N] | 7900 |
| Ball bearings output axial load   | [N] | 1340 |
| Taper bearings output axial load  | [N] | 1580 |

#### Accessories

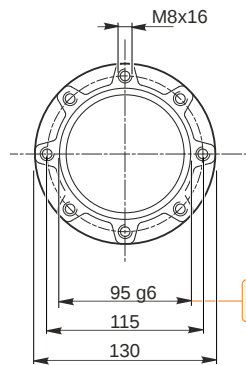
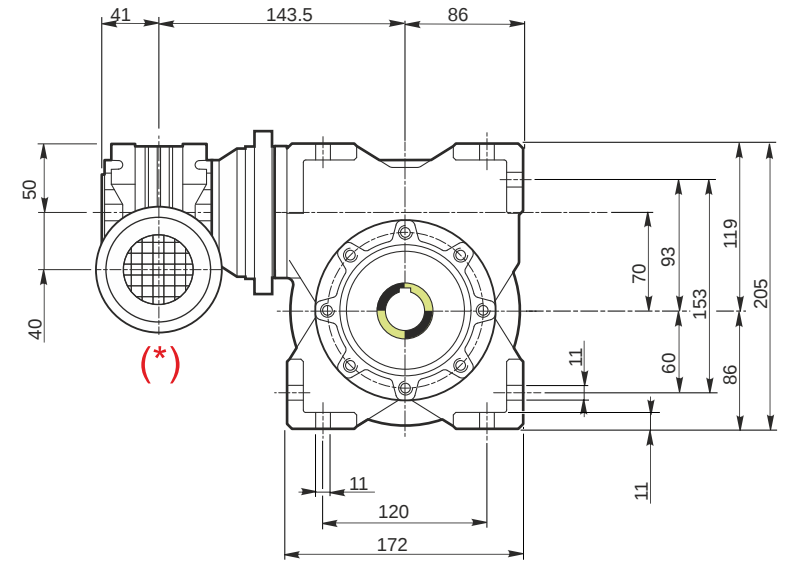
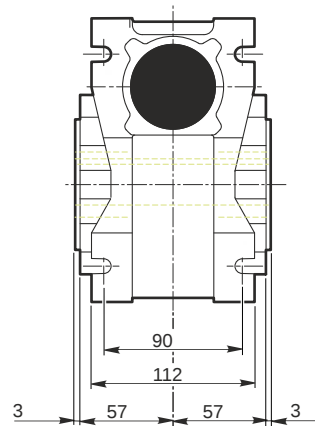
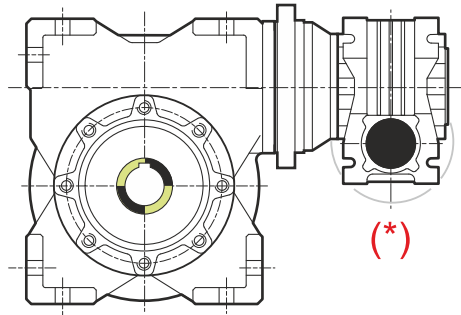
|                     |  |       |
|---------------------|--|-------|
| Hollow output shaft |  | AC 28 |
|---------------------|--|-------|

### Electric motor

|       |      |       |
|-------|------|-------|
| Size  |      | 71 A4 |
| Poles |      | 4     |
| Power | [kW] | 0.25  |

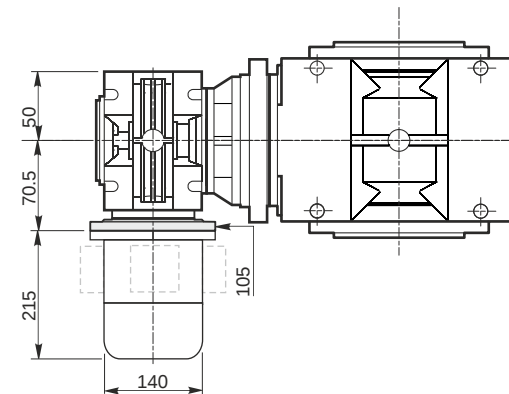
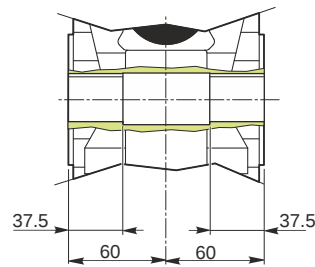
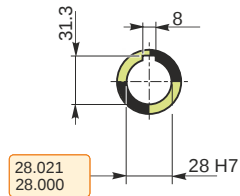
#### Electric motor configuration

|                       |  |     |
|-----------------------|--|-----|
| Motor flange          |  | B14 |
| Terminal box position |  | X3  |



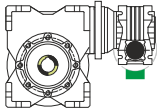
94.988  
94.966

*Hollow output shaft*

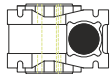


**Mounting positions**

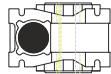
**B3**



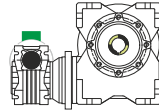
**B6**



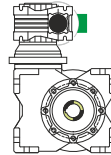
**B7**



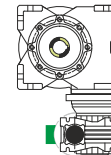
**B8**



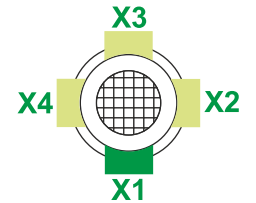
**V5**



**V6**



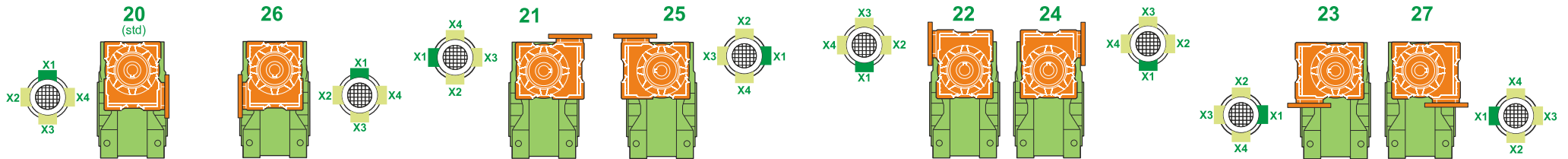
Terminal box position



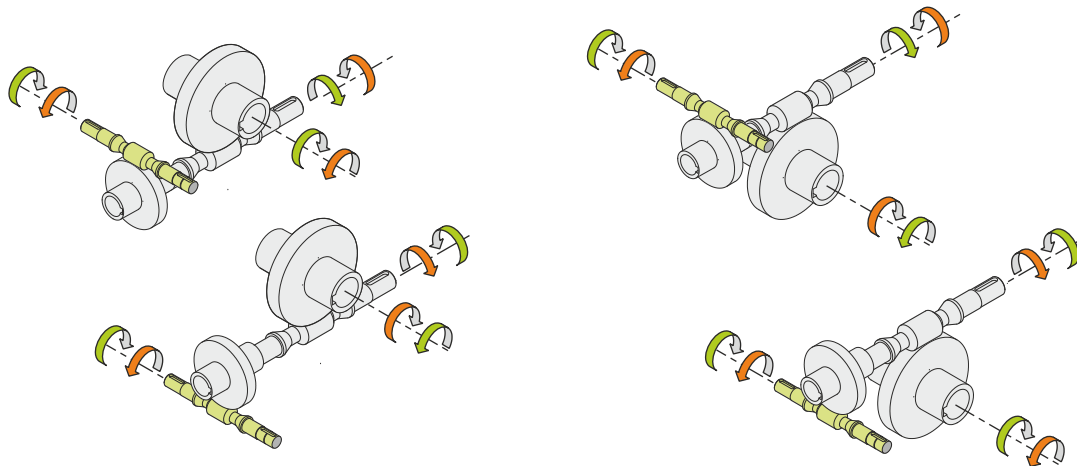
|      |   |   |   |                         |
|------|---|---|---|-------------------------|
| 0.08 | 1 | 2 | 1 | ← Oil quantity [litres] |
| 0.35 | 2 | 1 | 2 |                         |

Lubricant type: Long life synthetic oil ISO VG320

**Attachment position**



**Direction of rotation**



**Weight**

|                     |     |
|---------------------|-----|
| Gear unit [kg]      | 12  |
| Electric motor [kg] | 6.2 |

**Gearing data**

|   |                  |        |
|---|------------------|--------|
|  | Axial module     | 3.9    |
|   | Number of starts | 1      |
|   | Lead angle       | 7° 12' |
|   | Pressure angle   | 20°    |

**Backdriving**

Static self-locking  
Slow back-driving in case of vibrations  
Low dynamic back-driving

**M RT/RT 40/70 B3 21 560 71 B14 AC 28 MT 0.25 kW 71 A4 B14 X3**