

Input data

System of measurement		Metric
Input type		Gear motor
Input speed	[rpm]	1400
Output speed	[rpm]	0.63
Ratio (i=)		2240
Frequency	[Hz]	50
Input options		IEC
Requested input power	[kW]	0.09
Service factor		1
Rated Power P1	[kW]	0.09

Output data

Gear unit	M RT/RT 40/70 B3 21 2240 56 B5 AC 28 MT 0.09 kW 56 B4 B5 X3
------------------	--

Type		RT/RT - Worm speed reducers
Input type		M
Size		40/70
Ratio (i=)		2240
Gearbox ratio		40.00
Pre-stage ratio		56.00
Input flange		B5
Input speed	[rpm]	1400
Output speed	[rpm]	0.63
Rated output torque	[Nm]	371.3
Service Factor		1
Efficiency		0.27

Gear unit configuration

Output shaft		Hollow output shaft
Fixing		Universal
Version		B3
Attachment position		21

Output radial and axial loads

Ball bearings output radial load	[N]	6700
Taper bearings output radial load	[N]	7900
Ball bearings output axial load	[N]	1340
Taper bearings output axial load	[N]	1580

Accessories

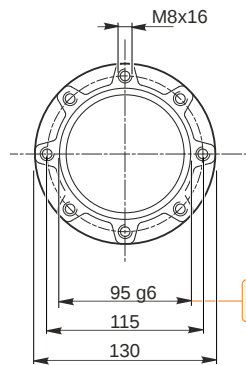
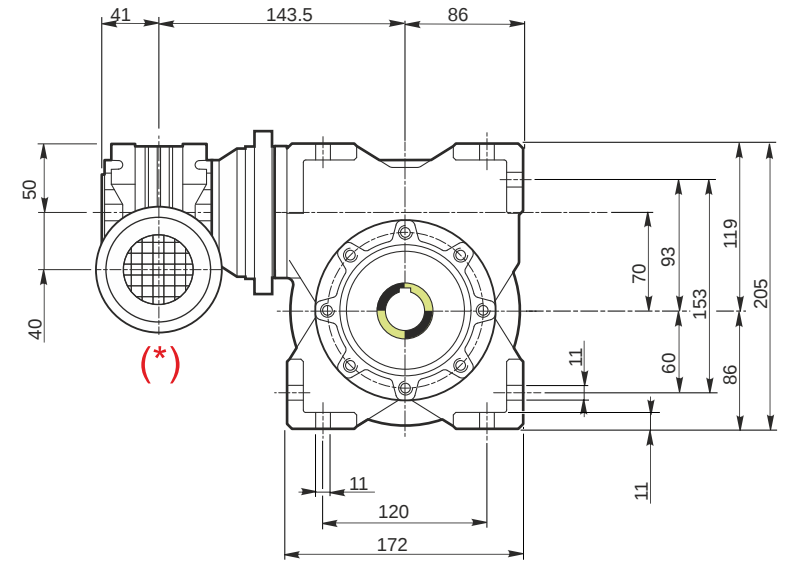
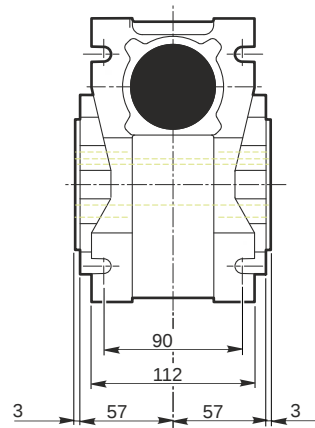
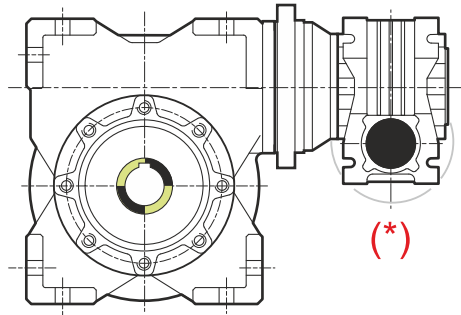
Hollow output shaft		AC 28
---------------------	--	-------

Electric motor

Size		56 B4
Poles		4
Power	[kW]	0.09

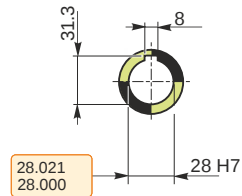
Electric motor configuration

Motor flange		B5
Terminal box position		X3

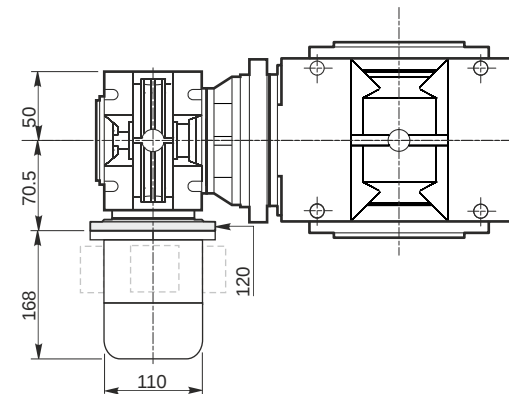
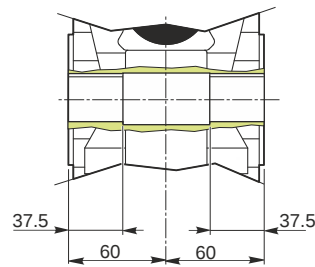


94.988
94.966

Hollow output shaft

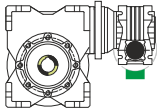


28.021
28.000

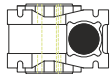


Mounting positions

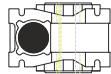
B3



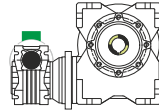
B6



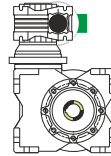
B7



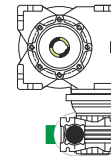
B8



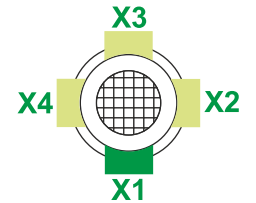
V5



V6



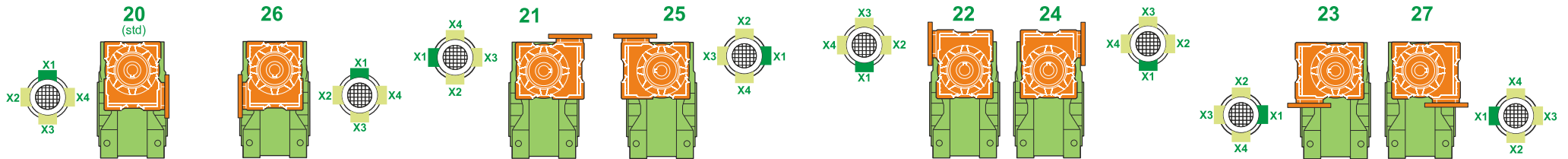
Terminal box position



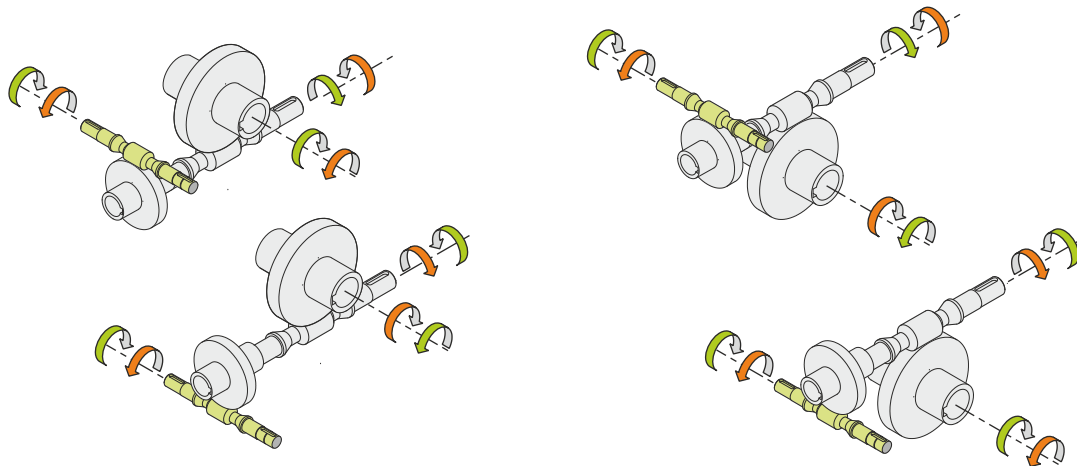
0.08	1	2	1	← Oil quantity [litres]
0.35	2	2	1	

Lubricant type: Long life synthetic oil ISO VG320

Attachment position



Direction of rotation



Weight

Gear unit [kg]	12
Electric motor [kg]	2.6

Gearing data

2	Axial module	2.8
	Number of starts	1
	Lead angle	5° 42'
	Pressure angle	20°

Backdriving

Static self-locking
Slow back-driving in case of vibrations
Low dynamic back-driving

M RT/RT 40/70 B3 21 2240 56 B5 AC 28 MT 0.09 kW 56 B4 B5 X3