

Input data

System of measurement		Metric
Input type		Gear motor
Input speed	[rpm]	1400
Output speed	[rpm]	1.79
Ratio (i=)		784
Frequency	[Hz]	50
Input options		IEC
Requested input power	[kW]	0.25
Service factor		1.1
Rated Power P1	[kW]	0.13

Output data

Gear unit	M RT/RT 40/85 B3 21 784 71 B14 AC 32 MT 0.25 kW 71 A4 B14 X3	
------------------	---	--

Type		RT/RT - Worm speed reducers
Input type		M
Size		40/85
Ratio (i=)		784
Gearbox ratio		28.00
Pre-stage ratio		28.00
Input flange		B14
Input speed	[rpm]	1400
Output speed	[rpm]	1.79
Rated output torque	[Nm]	534.8
Service Factor		1.1
Efficiency		0.4

Gear unit configuration

Output shaft		Hollow output shaft
Fixing		Universal
Version		B3
Attachment position		21

Output radial and axial loads

Ball bearings output radial load	[N]	8300
Taper bearings output radial load	[N]	9400
Ball bearings output axial load	[N]	1660
Taper bearings output axial load	[N]	1880

Accessories

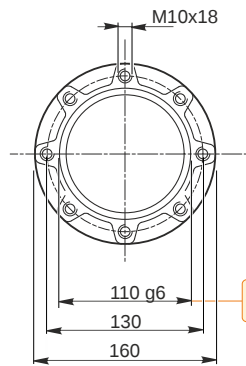
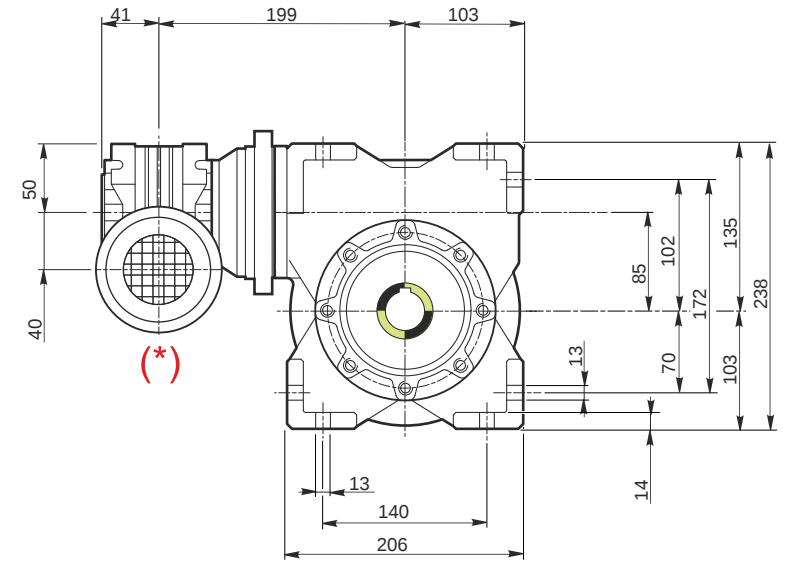
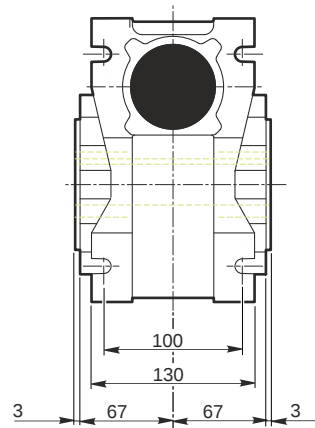
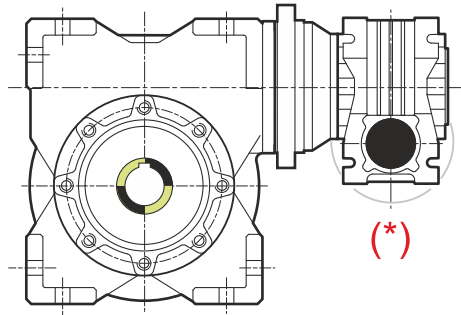
Hollow output shaft		AC 32
---------------------	--	-------

Electric motor

Size		71 A4
Poles		4
Power	[kW]	0.25

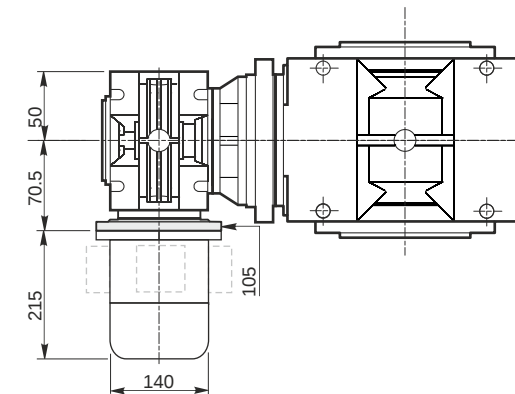
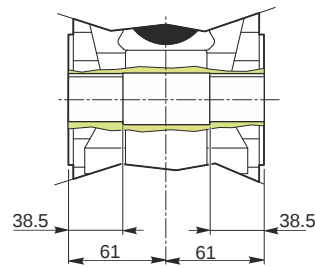
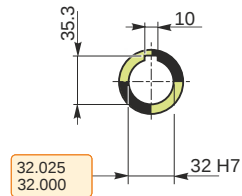
Electric motor configuration

Motor flange		B14
Terminal box position		X3



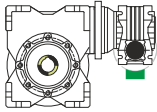
109.988
109.966

Hollow output shaft

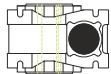


Mounting positions

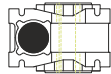
B3



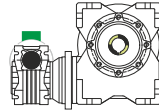
B6



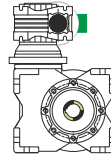
B7



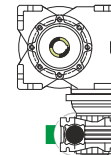
B8



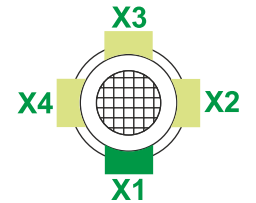
V5



V6



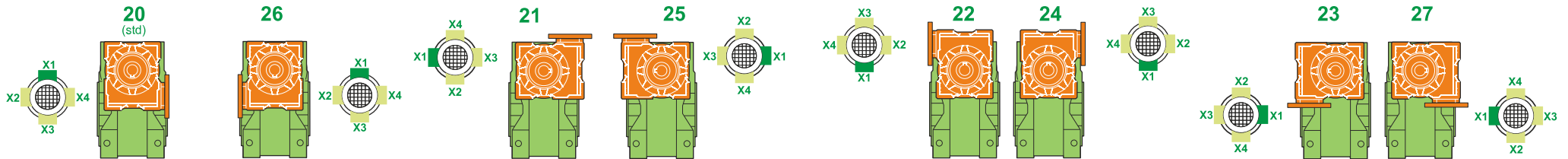
Terminal box position



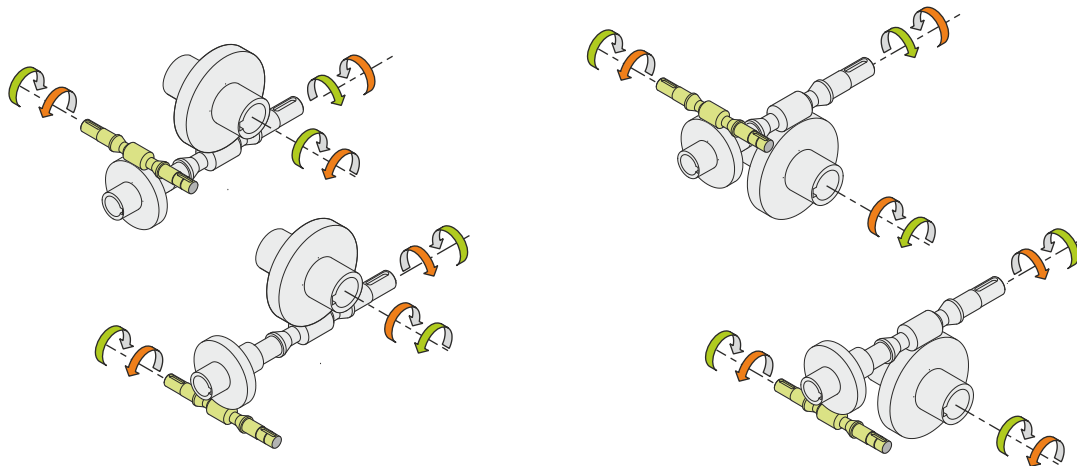
0.08	1	2	1	← Oil quantity [litres]
0.6	2	2	1	

Lubricant type: Long life synthetic oil ISO VG320

Attachment position



Direction of rotation



Weight

Gear unit [kg]	16.5
Electric motor [kg]	6.2

Gearing data

	Axial module	4.7
	Number of starts	1
	Lead angle	6° 58'
	Pressure angle	20°

Backdriving

Static self-locking
Slow back-driving in case of vibrations
Low dynamic back-driving

M RT/RT 40/85 B3 21 784 71 B14 AC 32 MT 0.25 kW 71 A4 B14 X3