

Input data

System of measurement		Metric
Input type		Gear motor
Input speed	[rpm]	1400
Output speed	[rpm]	0.14
Ratio (i=)		10000
Frequency	[Hz]	50
Input options		IEC
Requested input power	[kW]	0.06
Service factor		0.4

Warning! The torque generated by the selected motor is above the gearbox rated output torque; please refer to the gearbox rated output torque.

Output data

Gear unit	M RT/RT 40/85 B3 21 10000 56 B5 AC 32 MT 0.06 kW 56 A4 B5 X3	
------------------	---	--

Type		RT/RT - Worm speed reducers
Input type		M
Size		40/85
Ratio (i=)		10000
Gearbox ratio		100.00
Pre-stage ratio		100.00
Input flange		B5
Input speed	[rpm]	1400
Output speed	[rpm]	0.14
Rated output torque	[Nm]	264
Service Factor		0.4
Efficiency		0.15

Gear unit configuration

Output shaft		Hollow output shaft
Fixing		Universal
Version		B3
Attachment position		21

Output radial and axial loads

Ball bearings output radial load	[N]	8300
Taper bearings output radial load	[N]	9400
Ball bearings output axial load	[N]	1660
Taper bearings output axial load	[N]	1880

Accessories

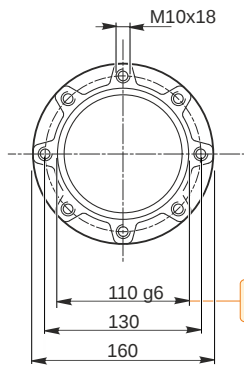
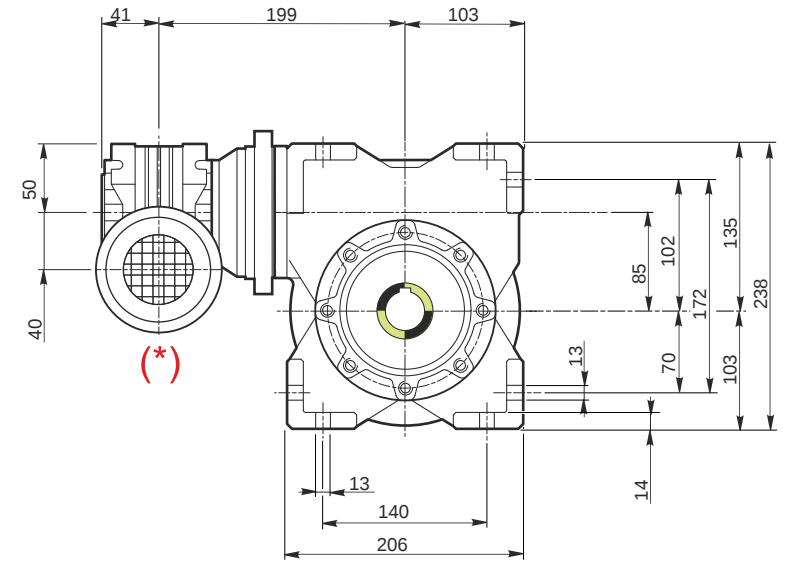
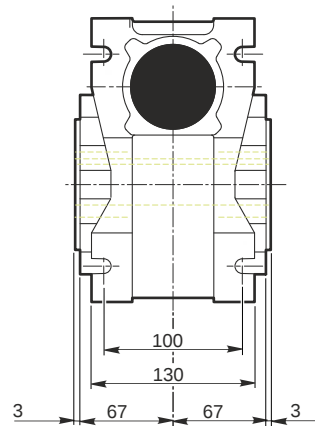
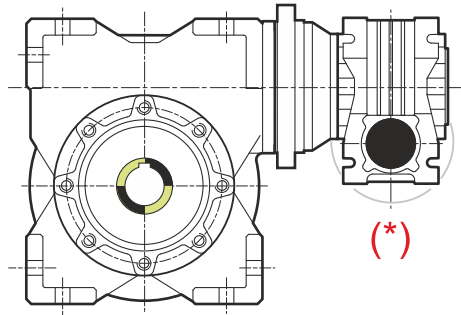
Hollow output shaft		AC 32
---------------------	--	-------

Electric motor

Size		56 A4
Poles		4
Power	[kW]	0.06

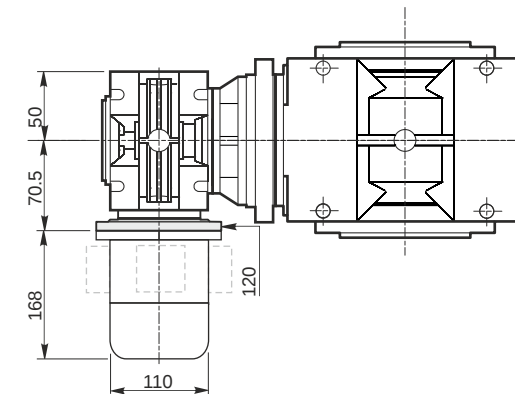
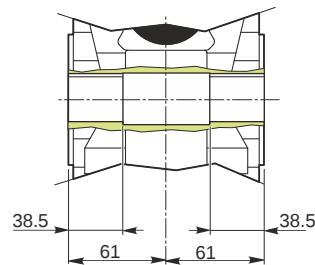
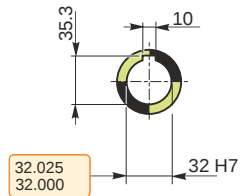
Electric motor configuration

Motor flange		B5
Terminal box position		X3



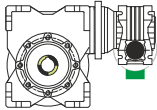
109.988
109.966

Hollow output shaft

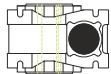


Mounting positions

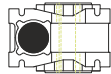
B3



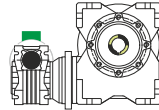
B6



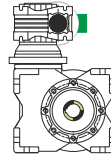
B7



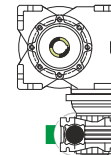
B8



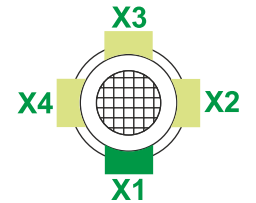
V5



V6



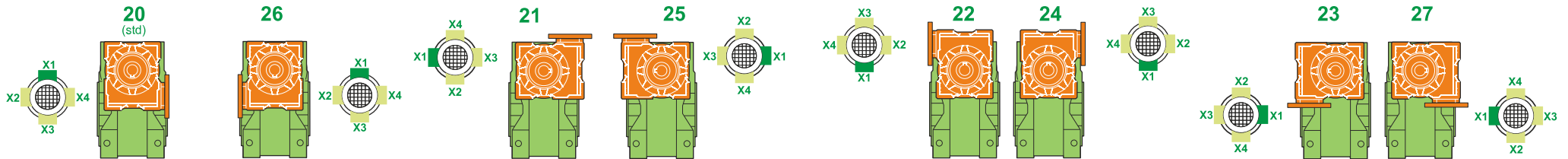
Terminal box position



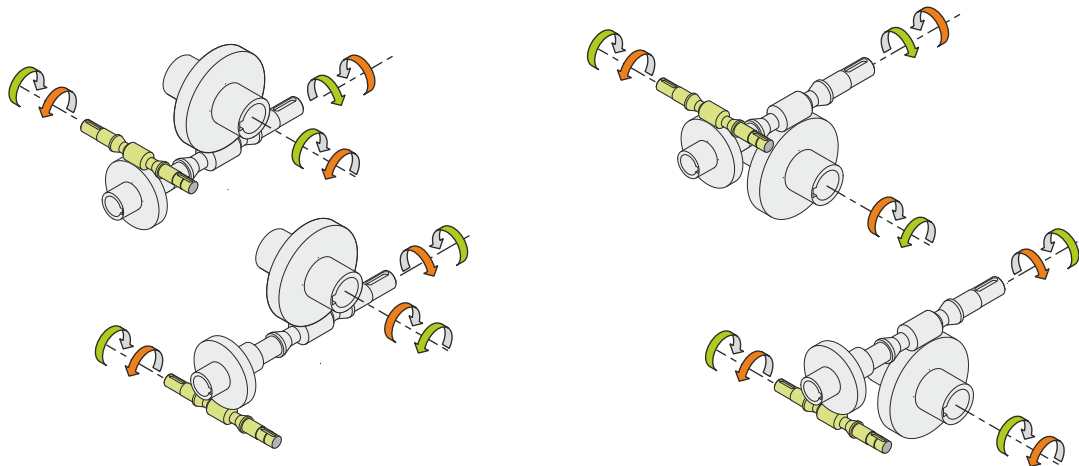
0.08	1	2	1	← Oil quantity [litres]
0.6	2	2	1	

Lubricant type: Long life synthetic oil ISO VG320

Attachment position



Direction of rotation



Weight

Gear unit [kg]	16.5
Electric motor [kg]	2.6

Gearing data

	Axial module	1.4
	Number of starts	1
	Lead angle	2° 40'
	Pressure angle	20°

Backdriving

- Static self-locking
- No back-driving
- No dynamic back-driving

M RT/RT 40/85 B3 21 10000 56 B5 AC 32 MT 0.06 kW 56 A4 B5 X3