

Input data

| | | |
|-----------------------|-------|------------|
| System of measurement | | Metric |
| Input type | | Gear motor |
| Input speed | [rpm] | 1400 |
| Output speed | [rpm] | 1.25 |
| Ratio (i=) | | 1120 |
| Frequency | [Hz] | 50 |
| Input options | | IEC |
| Requested input power | [kW] | 0.55 |
| Service factor | | 0.8 |
| Rated Power P1 | [kW] | 0.45 |

Output data

| | |
|------------------|---|
| Gear unit | M RT/RT 50/110 B3 21 1120 80 B14 AC 42 MT 0.55 kW 80 A4 B14 X3 |
|------------------|---|

| | | |
|---------------------|-------|-----------------------------|
| Type | | RT/RT - Worm speed reducers |
| Input type | | M |
| Size | | 50/110 |
| Ratio (i=) | | 1120 |
| Gearbox ratio | | 28.00 |
| Pre-stage ratio | | 40.00 |
| Input flange | | B14 |
| Input speed | [rpm] | 1400 |
| Output speed | [rpm] | 1.25 |
| Rated output torque | [Nm] | 1554.74 |
| Service Factor | | 0.8 |
| Efficiency | | 0.37 |

Gear unit configuration

| | | |
|---------------------|--|---------------------|
| Output shaft | | Hollow output shaft |
| Fixing | | Universal |
| Version | | B3 |
| Attachment position | | 21 |

Output radial and axial loads

| | | |
|-----------------------------------|-----|-------|
| Ball bearings output radial load | [N] | 9800 |
| Taper bearings output radial load | [N] | 11100 |
| Ball bearings output axial load | [N] | 1960 |
| Taper bearings output axial load | [N] | 2220 |

Accessories

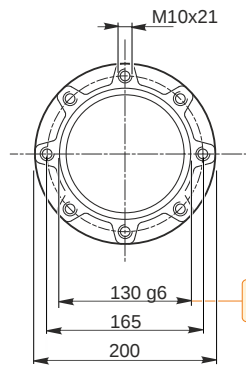
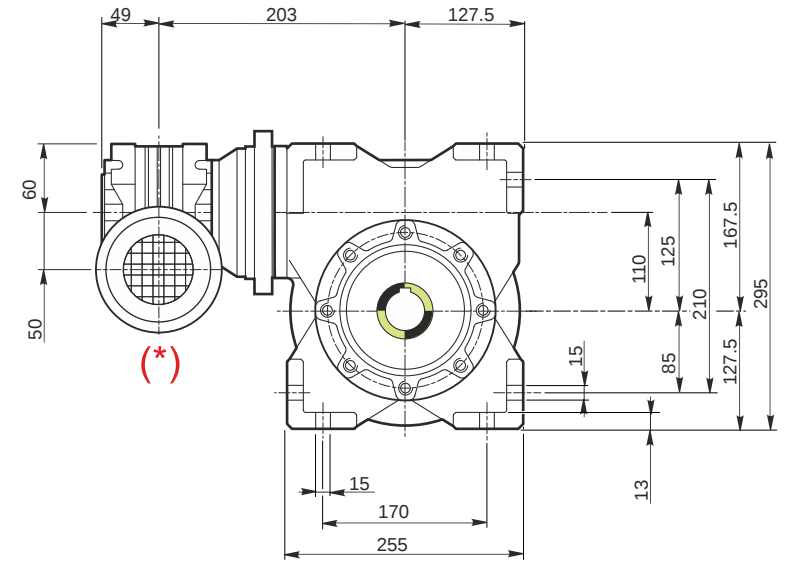
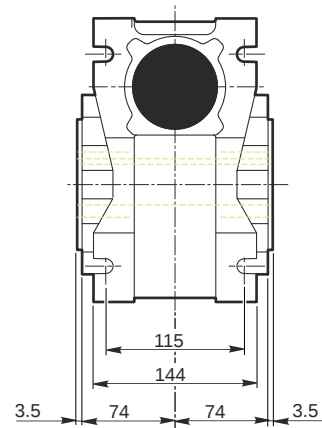
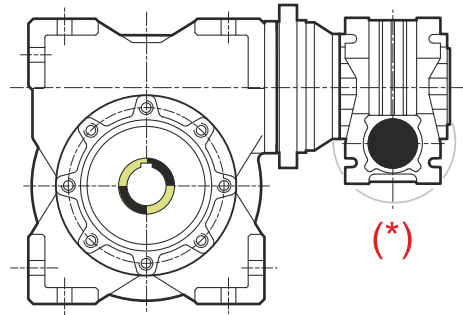
| | | |
|---------------------|--|-------|
| Hollow output shaft | | AC 42 |
|---------------------|--|-------|

Electric motor

| | | |
|-------|------|-------|
| Size | | 80 A4 |
| Poles | | 4 |
| Power | [kW] | 0.55 |

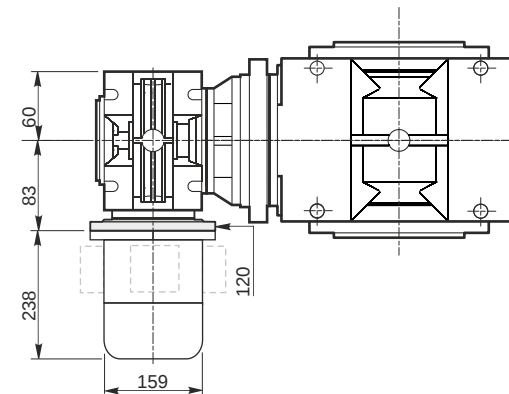
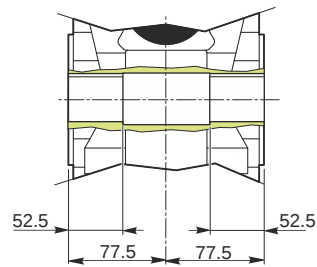
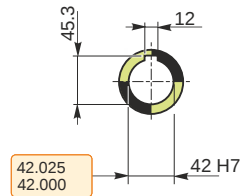
Electric motor configuration

| | | |
|-----------------------|--|-----|
| Motor flange | | B14 |
| Terminal box position | | X3 |



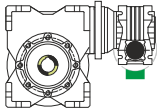
129.986
129.961

Hollow output shaft

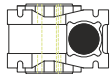


Mounting positions

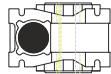
B3



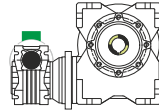
B6



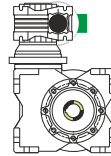
B7



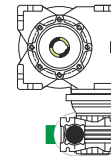
B8



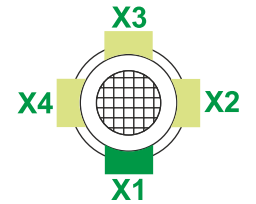
V5



V6



Terminal box position



0.13

1

2

1

1.5

2

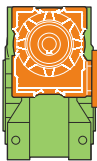
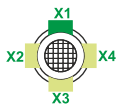


← Oil quantity [litres]

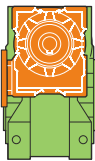
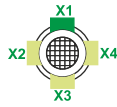
Lubricant type: Long life synthetic oil ISO VG320

Attachment position

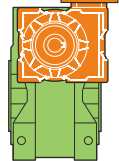
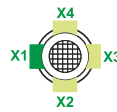
20
(std)



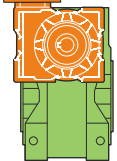
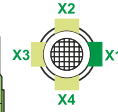
26



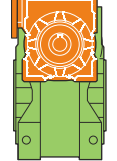
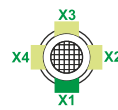
21



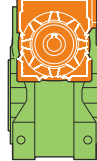
25



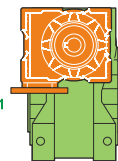
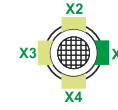
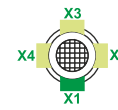
22



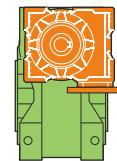
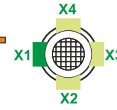
24



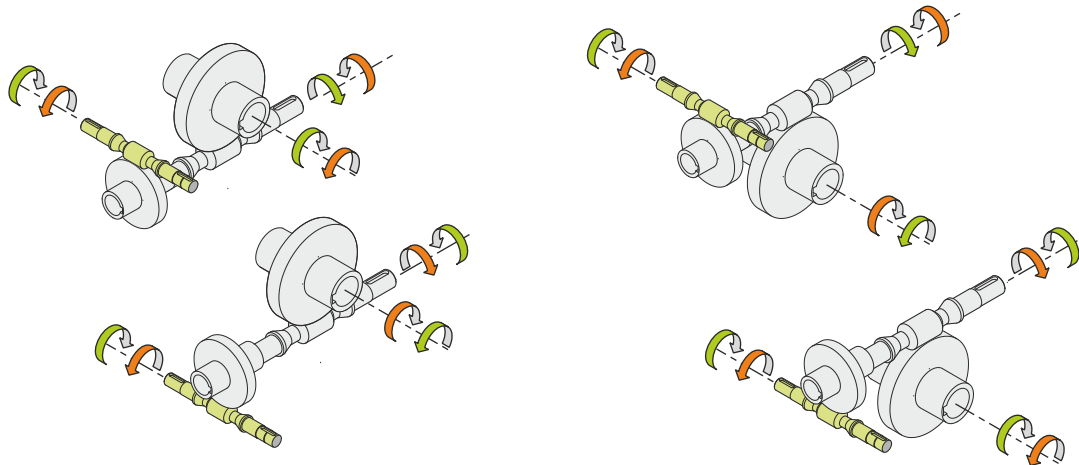
23



27



Direction of rotation



Weight

| | |
|---------------------|-----|
| Gear unit [kg] | 45 |
| Electric motor [kg] | 9.8 |

Gearing data

2



| | |
|------------------|--------|
| Axial module | 6.1 |
| Number of starts | 1 |
| Lead angle | 7° 04' |
| Pressure angle | 20° |

Backdriving

Static self-locking
Slow back-driving in case of vibrations
Low dynamic back-driving

M RT/RT 50/110 B3 21 1120 80 B14 AC 42 MT 0.55 kW 80 A4 B14 X3