

Input data

System of measurement		Metric
Input type		Gear motor
Input speed	[rpm]	1400
Output speed	[rpm]	0.89
Ratio (i=)		1568
Frequency	[Hz]	50
Input options		IEC
Requested input power	[kW]	0.37
Service factor		1
Rated Power P1	[kW]	0.38

Output data

Gear unit **M RT/RT 50/110 B3 21 1568 71 B14 AC 42 MT 0.37 kW 71 B4 B14 X3**

Type		RT/RT - Worm speed reducers
Input type		M
Size		50/110
Ratio (i=)		1568
Gearbox ratio		28.00
Pre-stage ratio		56.00
Input flange		B14
Input speed	[rpm]	1400
Output speed	[rpm]	0.89
Rated output torque	[Nm]	1305.98
Service Factor		1
Efficiency		0.33

Gear unit configuration

Output shaft		Hollow output shaft
Fixing		Universal
Version		B3
Attachment position		21

Output radial and axial loads

Ball bearings output radial load	[N]	9800
Taper bearings output radial load	[N]	11100
Ball bearings output axial load	[N]	1960
Taper bearings output axial load	[N]	2220

Accessories

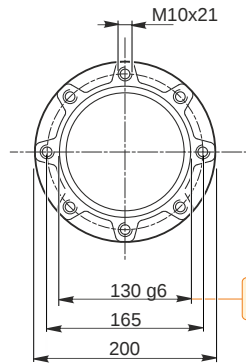
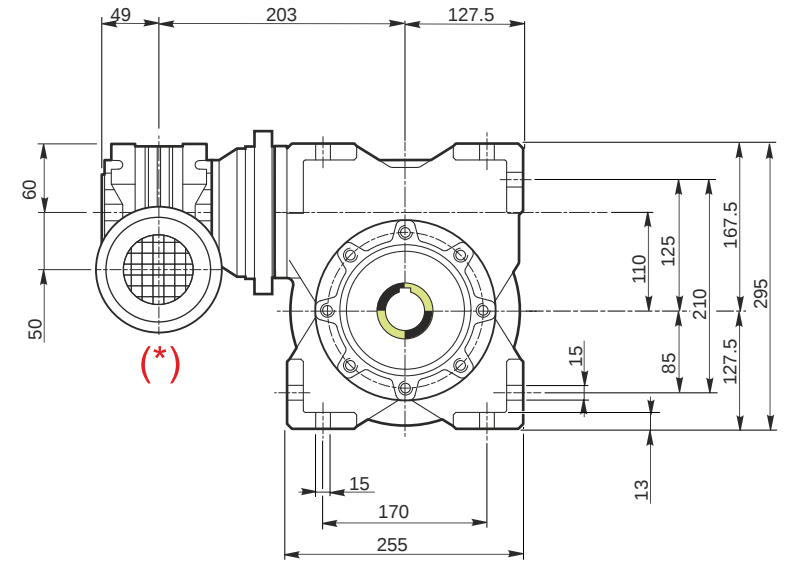
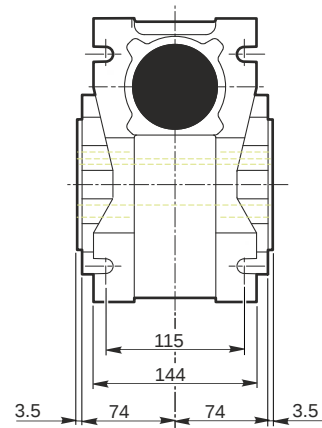
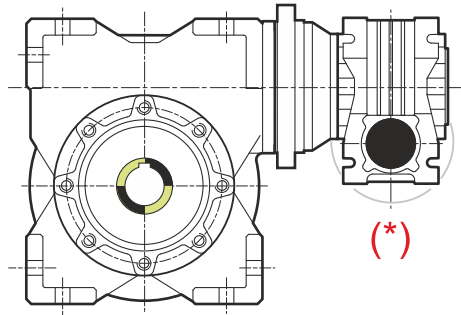
Hollow output shaft		AC 42
---------------------	--	-------

Electric motor

Size		71 B4
Poles		4
Power	[kW]	0.37

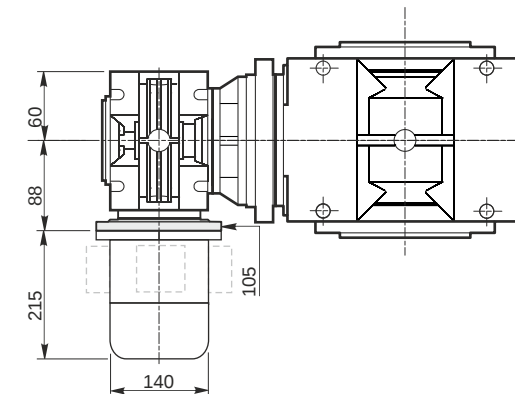
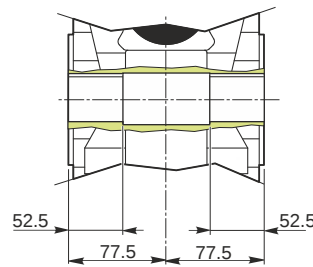
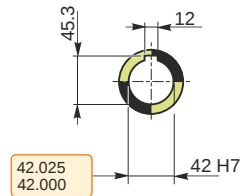
Electric motor configuration

Motor flange		B14
Terminal box position		X3



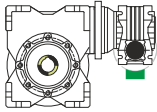
129.986
129.961

Hollow output shaft

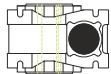


Mounting positions

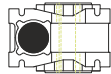
B3



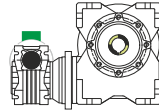
B6



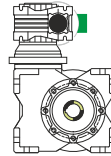
B7



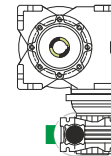
B8



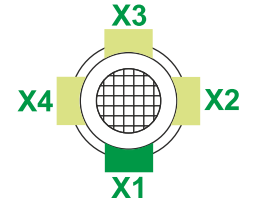
V5



V6



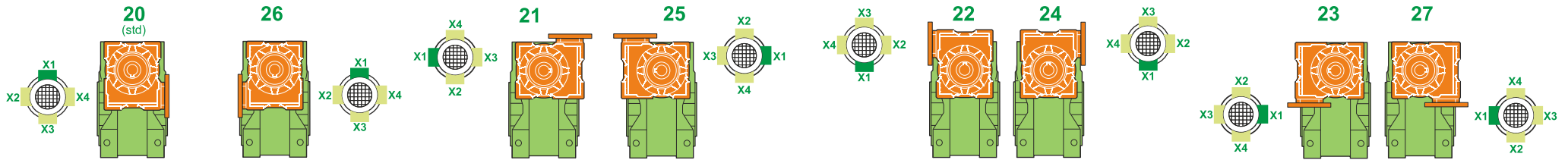
Terminal box position



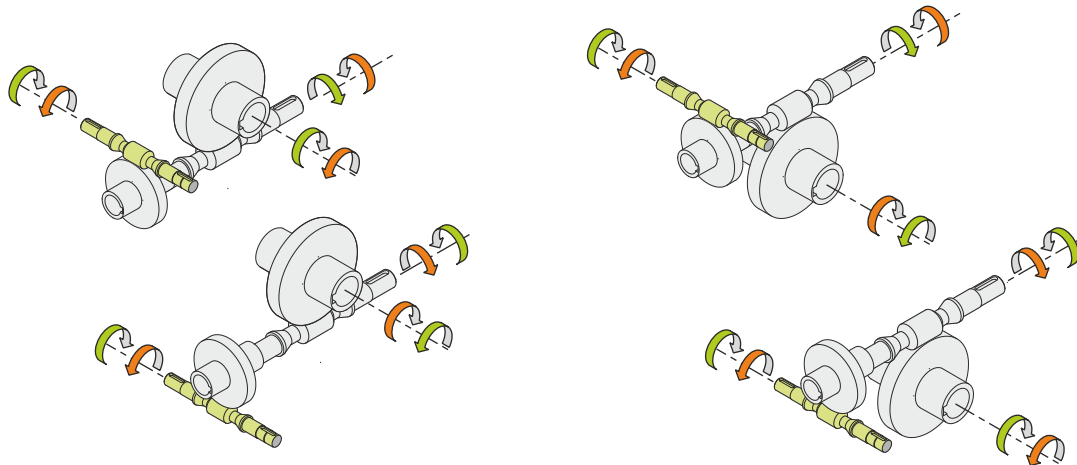
0.13	1	2	1	← Oil quantity [litres]
1.5	2			

Lubricant type: Long life synthetic oil ISO VG320

Attachment position



Direction of rotation



Weight

Gear unit [kg]	45
Electric motor [kg]	6.2

Gearing data

	Axial module	6.1
	Number of starts	1
	Lead angle	7° 04'
	Pressure angle	20°

Backdriving

Static self-locking
Slow back-driving in case of vibrations
Low dynamic back-driving

M RT/RT 50/110 B3 21 1568 71 B14 AC 42 MT 0.37 kW 71 B4 B14 X3