

### Input data

System of measurement		Metric	
Input type		Gear motor	
Input speed	[rpm]	1400	
Output speed	[rpm]	0.18	
Ratio (i=)		8000	
Frequency	[Hz]	50	
Input options		IEC	
Requested input power	[kW]	0.13	
Service factor		0.6	<b>Warning! The torque generated by the selected motor is above the gearbox rated output torque; please refer to the gearbox rated output torque.</b>
Rated Power P1	[kW]	0.08	

### Output data

<b>Gear unit</b>	<b>M RT/RT 50/110 B3 21 8000 63 B5 AC 42 MT 0.13 kW 63 A4 B5 X3</b>
------------------	---

Type		RT/RT - Worm speed reducers
Input type		M
Size		50/110
Ratio (i=)		8000
Gearbox ratio		80.00
Pre-stage ratio		100.00
Input flange		B5
Input speed	[rpm]	1400
Output speed	[rpm]	0.18
Rated output torque	[Nm]	810
Service Factor		0.6
Efficiency		0.18

#### Gear unit configuration

Output shaft		Hollow output shaft
Fixing		Universal
Version		B3
Attachment position		21

#### Output radial and axial loads

Ball bearings output radial load	[N]	9800
Taper bearings output radial load	[N]	11100
Ball bearings output axial load	[N]	1960
Taper bearings output axial load	[N]	2220

#### Accessories

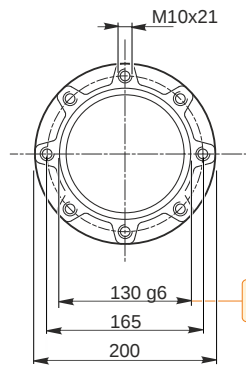
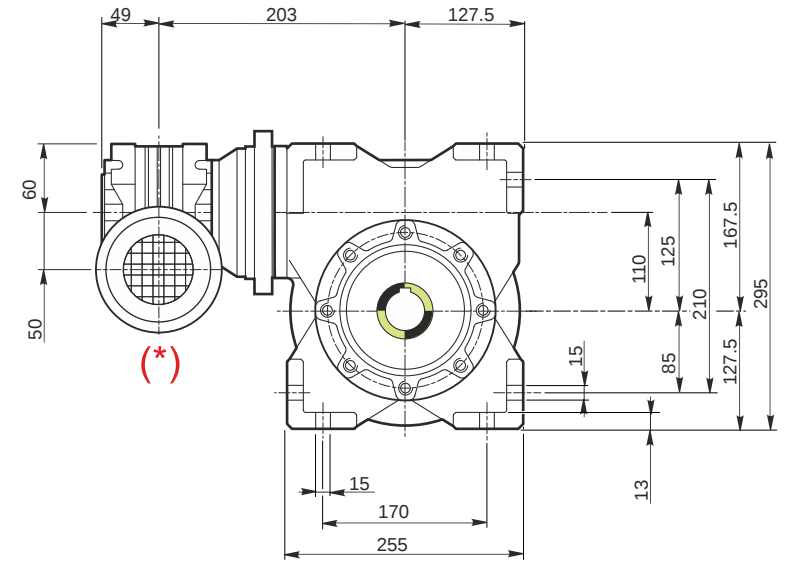
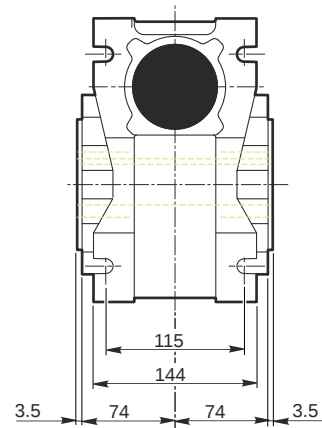
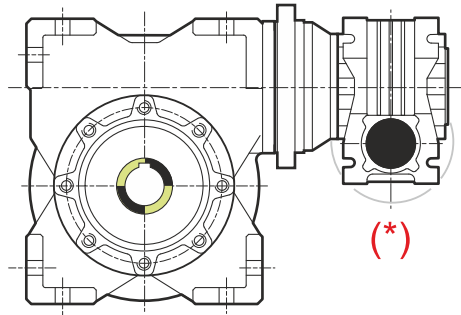
Hollow output shaft		AC 42
---------------------	--	-------

#### Electric motor

Size		63 A4
Poles		4
Power	[kW]	0.13

#### Electric motor configuration

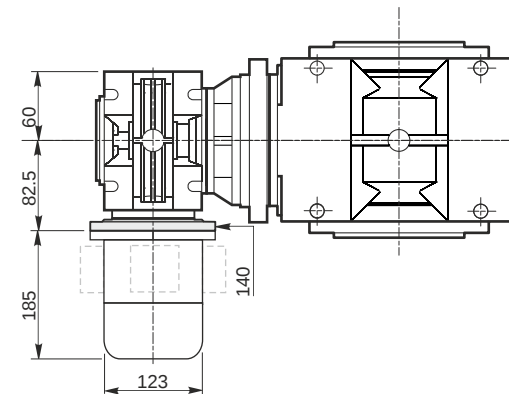
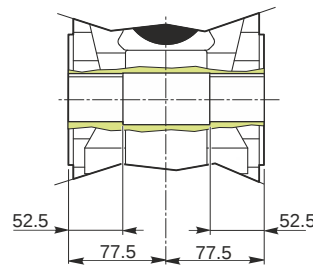
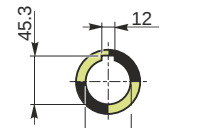
Motor flange		B5
Terminal box position		X3



Hollow output shaft

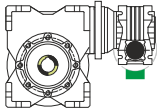
129.986  
129.961

42.025  
42.000

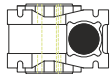


**Mounting positions**

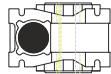
**B3**



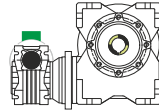
**B6**



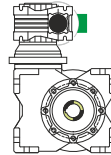
**B7**



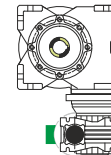
**B8**



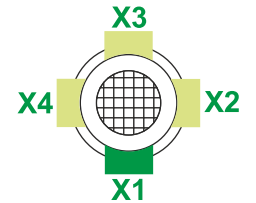
**V5**



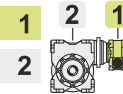
**V6**



Terminal box position



0.13



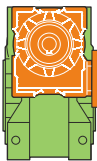
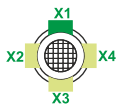
Oil quantity [litres]

1.5

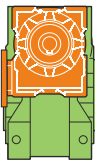
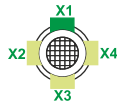
Lubricant type: Long life synthetic oil ISO VG320

**Attachment position**

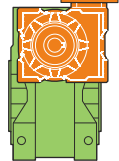
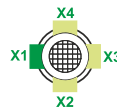
**20**  
(std)



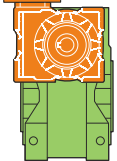
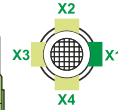
**26**



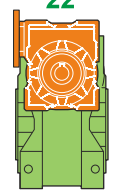
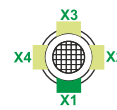
**21**



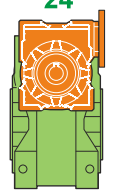
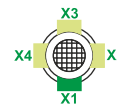
**25**



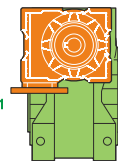
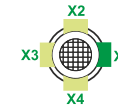
**22**



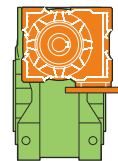
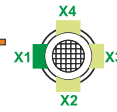
**24**



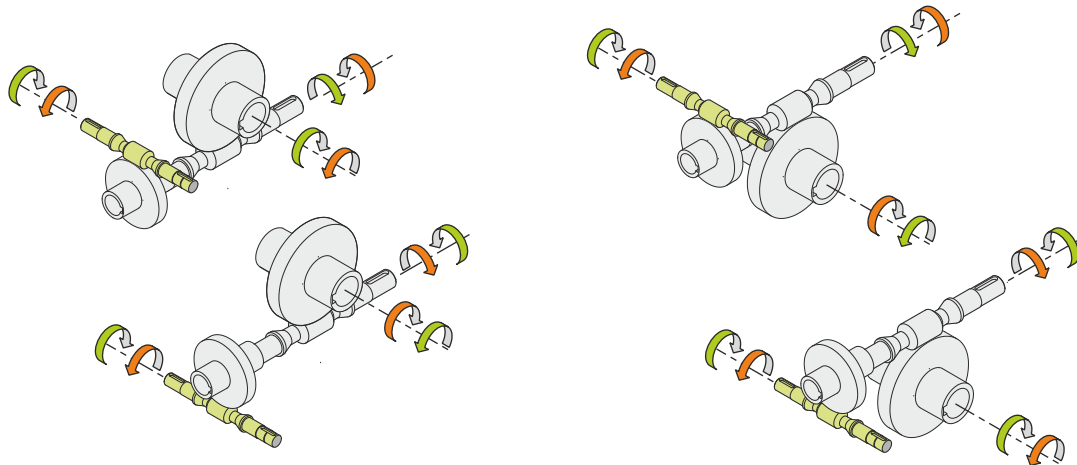
**23**



**27**



**Direction of rotation**



**Weight**

Gear unit [kg]	45
Electric motor [kg]	4.3

**Gearing data**



Axial module	2.3
Number of starts	1
Lead angle	3° 39'
Pressure angle	20°

**Backdriving**

- Static self-locking
- No back-driving
- No dynamic back-driving

**M RT/RT 50/110 B3 21 8000 63 B5 AC 42 MT 0.13 kW 63 A4 B5 X3**