

### Input data

System of measurement		Metric
Input type		Gear motor
Input speed	[rpm]	1400
Output speed	[rpm]	2.5
Ratio (i=)		560
Frequency	[Hz]	50
Input options		IEC
Requested input power	[kW]	0.06
Service factor		0.4
Rated Power P1	[kW]	0.03

**Warning! The torque generated by the selected motor is above the gearbox rated output torque; please refer to the gearbox rated output torque.**

### Output data

#### **Gear unit** M RS/RS 28/28 S (bolted) 11 560 56 B14 AC 14 MT 0.06 kW 56 A4 B14 X3 B3

Type		RS/RS - Worm speed reducers
Input type		M
Size		28/28
Ratio (i=)		560
Gearbox ratio		28.00
Pre-stage ratio		20.00
Input flange		B14
Mounting position		B3
Input speed	[rpm]	1400
Output speed	[rpm]	2.5
Rated output torque	[Nm]	36
Service Factor		0.4
Efficiency		0.37

#### **Gear unit configuration**

Output shaft		Hollow output shaft
Fixing		Feet
Version		S (bolted)
Attachment position		11

#### **Output radial and axial loads**

Ball bearings output radial load	[N]	1000
Taper bearings output radial load	[N]	1300
Ball bearings output axial load	[N]	200
Taper bearings output axial load	[N]	260

#### **Accessories**

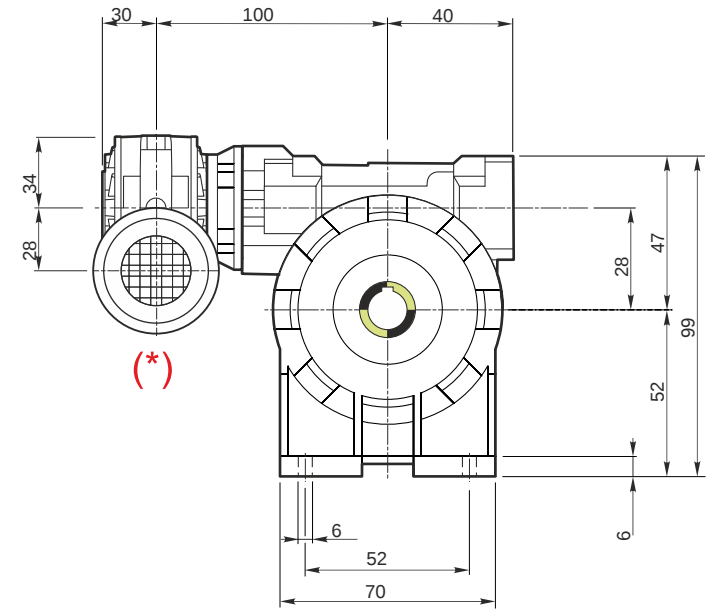
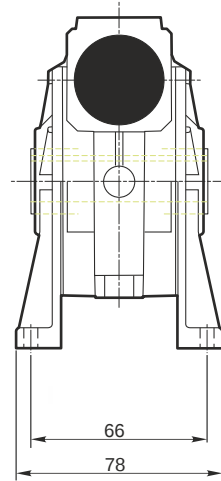
Hollow output shaft		AC 14
---------------------	--	-------

#### **Electric motor**

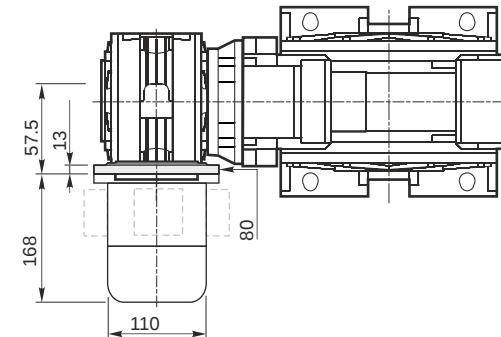
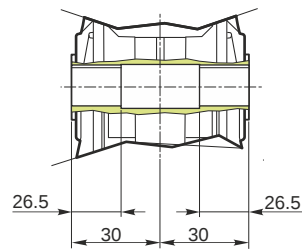
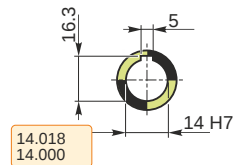
Size		56 A4
Poles		4
Power	[kW]	0.06

#### **Electric motor configuration**

Motor flange		B14
Terminal box position		X3

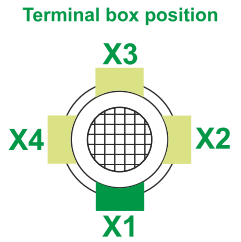
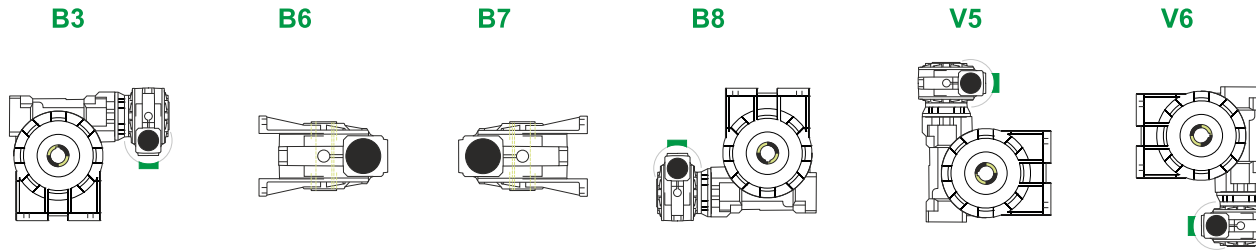


**Hollow output shaft**



**M RS/RS 28/28 S (bolted) 11 560 56 B14 AC 14 MT 0.06 kW 56 A4 B14 X3 B3**

**Mounting positions**

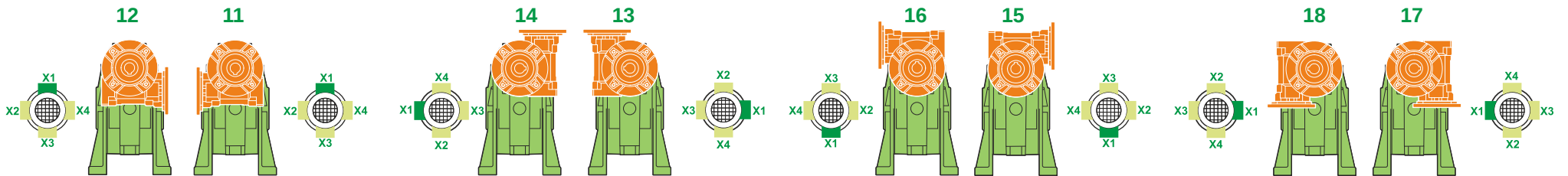


0.03	1
0.03	2

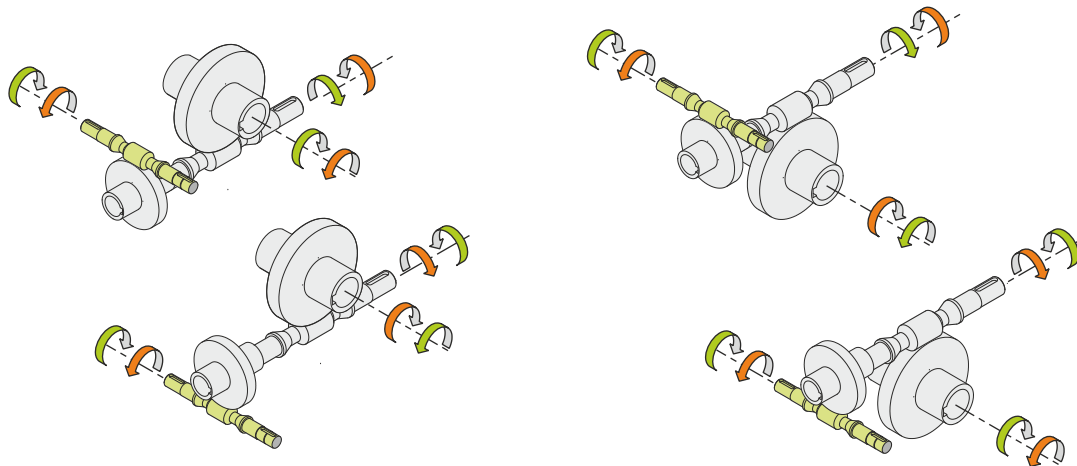


Lubricant type: Long life synthetic oil ISO VG320

**Attachment position**



**Direction of rotation**



**Weight**

Gear unit [kg]	2.5
Electric motor [kg]	2.6

**Gearing data 2**

2	Axial module	1.5
	Number of starts	1
	Lead angle	1
	Pressure angle	60°06'

**Backdriving**

- Static self-locking
- Slow back-driving in case of vibrations
- Low dynamic back-driving

**M RS/RS 28/28 S (bolted) 11 560 56 B14 AC 14 MT 0.06 kW 56 A4 B14 X3 B3**