

Input data

System of measurement		Metric
Input type		Gear motor
Input speed	[rpm]	1400
Output speed	[rpm]	1.79
Ratio (i=)		784
Frequency	[Hz]	50
Input options		IEC
Requested input power	[kW]	0.25
Service factor		1.1
Rated Power P1	[kW]	0.13

Output data

Gear unit **M RS/RS 40/85 S (bolted) 11 784 71 B14 AC 32 MT 0.25 kW 71 A4 B14 X3 B3**

Type		RS/RS - Worm speed reducers
Input type		M
Size		40/85
Ratio (i=)		784
Gearbox ratio		28.00
Pre-stage ratio		28.00
Input flange		B14
Mounting position		B3
Input speed	[rpm]	1400
Output speed	[rpm]	1.79
Rated output torque	[Nm]	534.8
Service Factor		1.1
Efficiency		0.4

Gear unit configuration

Output shaft		Hollow output shaft
Fixing		Feet
Version		S (bolted)
Attachment position		11

Output radial and axial loads

Ball bearings output radial load	[N]	8300
Taper bearings output radial load	[N]	9400
Ball bearings output axial load	[N]	1660
Taper bearings output axial load	[N]	1880

Accessories

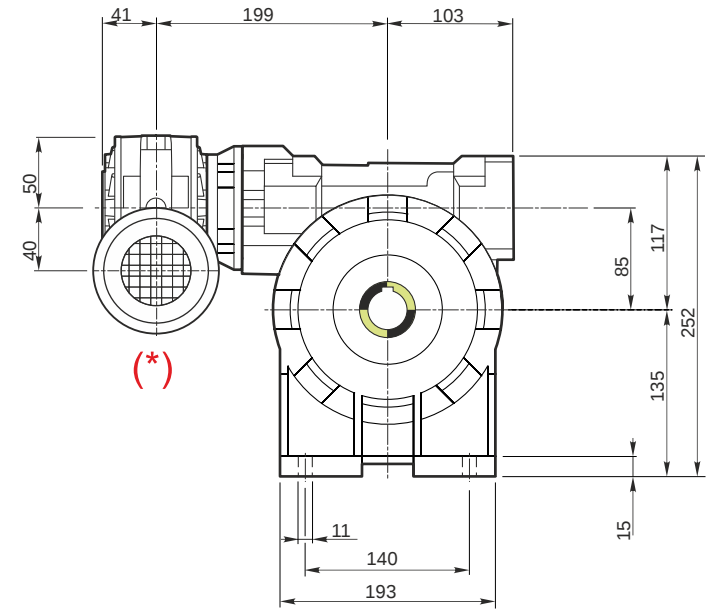
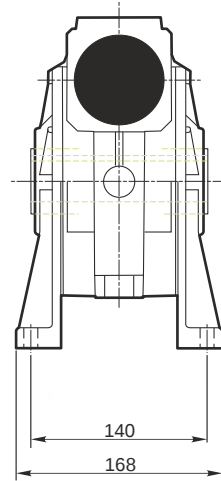
Hollow output shaft		AC 32
---------------------	--	-------

Electric motor

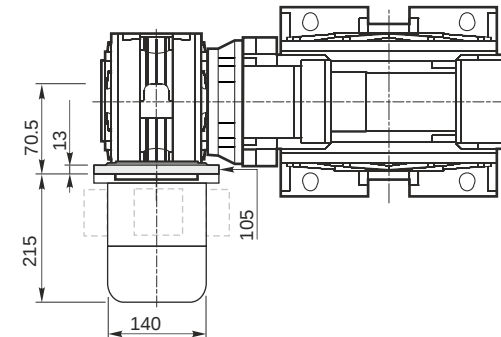
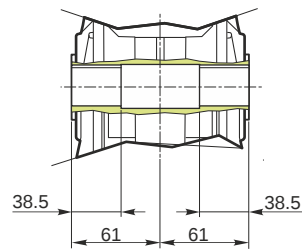
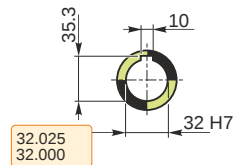
Size		71 A4
Poles		4
Power	[kW]	0.25

Electric motor configuration

Motor flange		B14
Terminal box position		X3

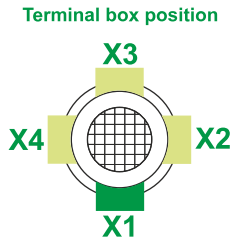
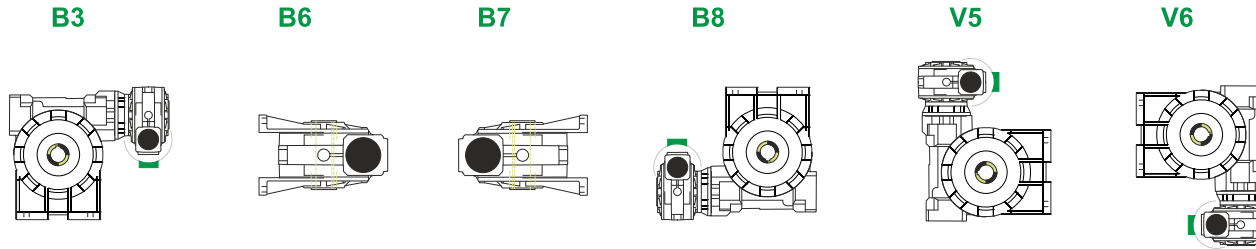


Hollow output shaft

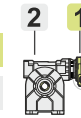


M RS/RS 40/85 S (bolted) 11 784 71 B14 AC 32 MT 0.25 kW 71 A4 B14 X3 B3

Mounting positions



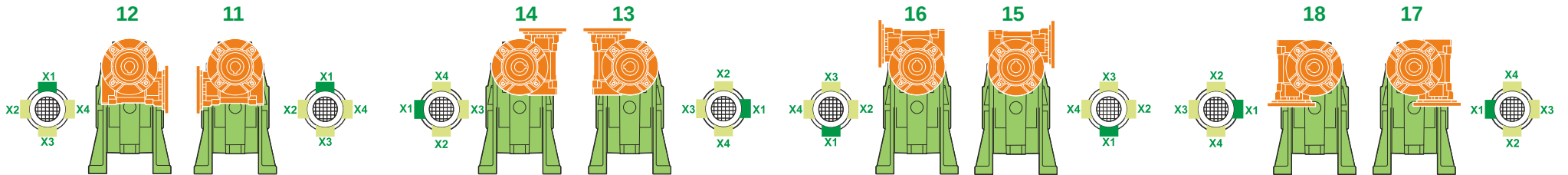
0.08	1
0.6	2



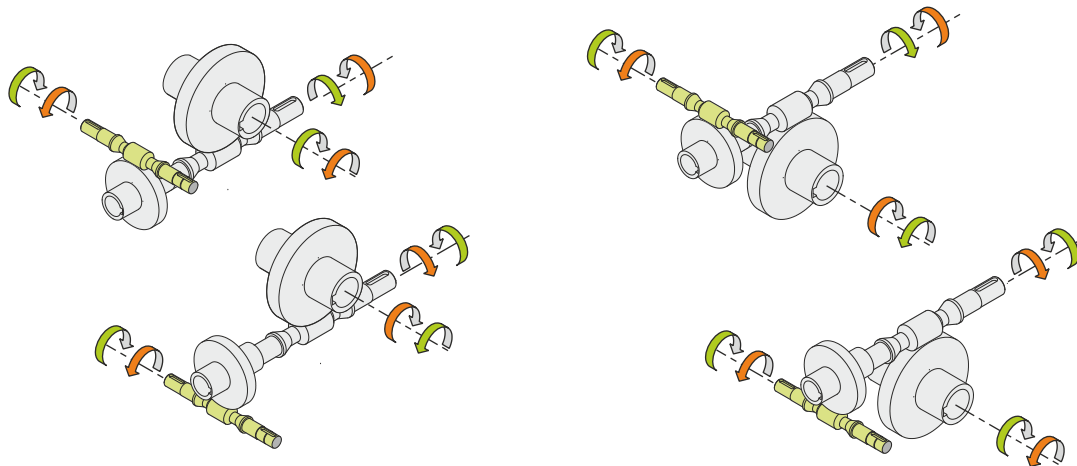
Oil quantity [litres]

Lubricant type: Long life synthetic oil ISO VG320

Attachment position



Direction of rotation



Weight

Gear unit [kg]	16.5
Electric motor [kg]	6.2

Gearing data 2



Axial module	4.7
Number of starts	1
Lead angle	1
Pressure angle	20° 58'

Backdriving

- Static self-locking
- Slow back-driving in case of vibrations
- Low dynamic back-driving

M RS/RS 40/85 S (bolted) 11 784 71 B14 AC 32 MT 0.25 kW 71 A4 B14 X3 B3